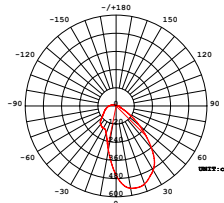


# OrgaLED® Side PHOTON

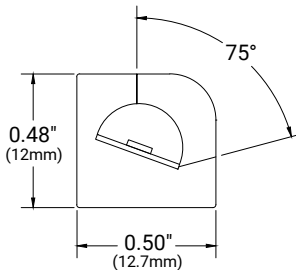
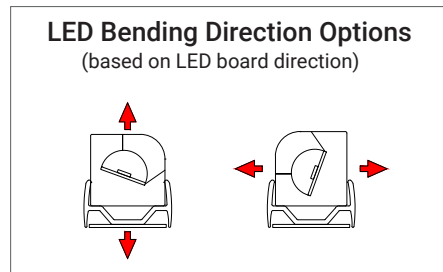
24V DC



Beam 75°

## FEATURES

- Very Flexible (Bend radius > 1.18" (30mm))
- High Efficacy- 91.7 lm/W
- High Density- 8 LEDs per cuttable section
- 24V DC - Low Voltage, Class 2
- Up to 33ft(10m) Continuous Runs
- 2700K, 3000K, 3500K, 4000K, 5000K
- IP40 or IP67 Wet Location
- Environmental Working Temperature: -4°F~132°F (-20°C~55.6°C)
- Field Cuttable 3.94in (100mm)
- 0-10V , TRIAC, Reverse Phase
- UV/IR protected PVC encapsulation
- UL Listed / CE /ROHS
- 5 years / 50,000 hrs warranty
- Long Lifetime : Calculated TM-21 L70 67000H / 7 years @ 132°F (55.6°C)



## PART NUMBER & SPECIFICATIONS

Part #	Color	CRI	lm/ft	lm/m	W/ft	W/m
<b>OrgaLED® Photon 1200 Side</b>						
042101-PH	2700K	>94	251	823	2.77	9.1
042102-PH	3000K	>94	255	836	2.77	9.1
042103-PH	3500K	>94	255	836	2.77	9.1
042104-PH	4000K	>94	269	882	2.77	9.1
042105-PH	5000K	>94	269	882	2.77	9.1
<b>OrgaLED® Photon 2000 Side</b>						
042201-PH	2700K	>94	331	1086	3.66	12
042202-PH	3000K	>94	337	1105	3.66	12
042203-PH	3500K	>94	337	1105	3.66	12
042204-PH	4000K	>94	356	1168	3.66	12
042205-PH	5000K	>94	356	1168	3.66	12



Project \_\_\_\_\_

Date \_\_\_\_\_

## Accessories

OrgaLED strips offer a range of 'Plug & Play' IP40 and IP67 field installable connectors.



**Side Starter Cable**  
16ft (4.88m)  
IP40 | IP67  
#042002



**Side White Jumper Cable**  
8" (203.2mm)  
IP40 | IP67  
#042004



**Side End Cap | IP40 / IP67**  
#042001



**PVC IP67 Waterproofing Kit**  
#011511



**IP67 Factory Waterproofing**  
#011508



**Waterproof Mini J-Box**  
#PC-JBOX

Specifications may be modified or improved without notification



# Power Supplies, Mountings & Extrusions



## POWER SUPPLIES - 24V

Forward Phase, Reverse Phase, & 0-10V Dimming Drivers. Outdoor enclosures available.

Part #	Ingress	Voltage	Wattage	Dimensions (inches / mm)	Description
045001	IP67	100-305V	20W	7.6 x 1.18 x 0.79 / 193 x 30 x 20	Dimmable LED Driver
045002	IP67	100-305V	40W	5.83 x 1.58 x 0.87/148 x 40 x 22	Dimmable LED Driver
045003	IP67	120-277V	60W	6.3 x 2.24 x 1.5/160 x 57 x 38	Dimmable LED Driver
045004	IP67	120-277V	75W	6.3 x 2.24 x 1.5/160 x 57 x 38	Dimmable LED Driver
045005	IP67	120-277V	96W	7.6 x 2.24 x 1.5/193 x 57 x 38	Dimmable LED Driver
045006	IP67	120-277V	200W	10.1 x 3.03 x 1.8/257 x 77 x 46	Dimmable LED Driver
045007	IP67	120-277V	300W	11.9 x 3.03 x 1.8/302 x 77 x 46	Dimmable LED Driver

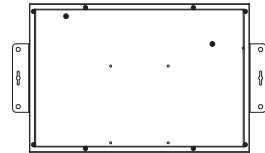
20W Dimmable Driver



75W Dimmable Driver



200W / 300W Enclosure



## ENCLOSURES

Part #	Ingress	Dimensions (inches / mm)	Description
045008	IP67	9.4 x 2.6 x 1.9 / 239 x 66 x 48	20W Enclosure
045009	IP67	11.02 x 4.05 x 2.2 / 280 x 103 x 56	40W Enclosure
045010	IP67	11.02 x 4.05 x 2.2 / 280 x 103 x 56	60W Enclosure
045011	IP67	11.02 x 4.05 x 2.2 / 280 x 103 x 56	75W Enclosure
045012	IP67	11.02 x 4.05 x 2.2 / 280 x 103 x 56	96W Enclosure
045013	IP67	16.7 x 9.8 x 2.3 / 424 x 249 x 58	200W Enclosure
045014	IP67	16.7 x 9.8 x 2.3 / 424 x 249 x 58	300W Enclosure

## Mounting & Extrusions

Mounts directly with brackets, self adhesive transparent channels, or in aluminum extrusions. For more extrusions, visit [organiclighting.com](http://organiclighting.com).



Aluminum Channel with an internal groove allows for a flathead screw. OrgaLED sits flush in channel.

**Aluminum Channel**  
0.41" x 0.41" (10.4 x 10.4mm)  
#012851  
**Aluminum Channel Clip**  
0.55" x 0.31" (14 x 7.9mm)  
#012850



PVC Clear Channel is lightweight and self adhesive.

**PVC Clear Channel 3.3ft (1m)**  
.57"W x .31"H (14.5 x 7.9mm)  
#041007

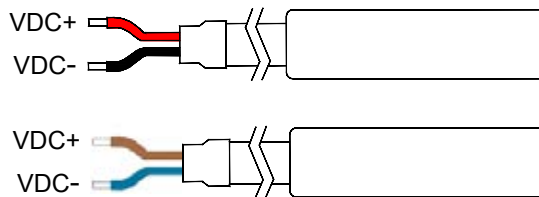


**SS Clip Side**  
0.97" x 0.75" x 0.51" (24.6 x 19.1 x 13mm)  
#011373

## Cable Requirement

The OrgaLED® LED strips need a minimum voltage at the beginning of the LED strip to function according to the specifications. The table below gives an indication of the maximum cable length based on the cable thickness. The standard OrgaLED® starter cable (20 AWG) has a cable length of 16ft (4.88m).

In case the required length is longer than the length mentioned in this cable, it is recommended to cut the starter cable down to 1ft and splice a larger gauge cable. Please contact your distributor for a detailed cable calculation.



Cable X Information	LED Strip	Max. Cable Length
<b>Photon 1200</b>		24V
20 AWG x 2	3.28 ft / 1 m	241 ft / 73.5 m
	16.4 ft / 5 m	48.5 ft / 14.8 m
	32.8 ft / 10 m	24.2 ft / 7.4 m
18 AWG x 2	3.28 ft / 1 m	379 ft / 114.6 m
	16.4 ft / 5 m	76.3 ft / 23 m
	32.8 ft / 10 m	38.1 ft / 11.5 m
16 AWG x 2	3.28 ft / 1 m	618 ft / 186.7 m
	16.4 ft / 5 m	124.4 ft / 37.5 m
	32.8 ft / 10 m	62 ft / 18.7 m
14 AWG x 2	3.28 ft / 1 m	960 ft / 292.7 m
	16.4 ft / 5 m	193.1 ft / 58.9 m
	32.8 ft / 10 m	96.3 ft / 29.4 m

Cable X Information	LED Strip	Max. Cable Length
<b>Photon 2000</b>		24V
20 AWG x 2	3.28 ft / 1 m	198.4 ft / 60.5 m
	16.4 ft / 5 m	39.7 ft / 12.1 m
	32.8 ft / 10 m	19.8 ft / 6 m
18 AWG x 2	3.28 ft / 1 m	312 ft / 94.2 m
	16.4 ft / 5 m	62.4 ft / 18.8 m
	32.8 ft / 10 m	31.2 ft / 9.4 m
16 AWG x 2	3.28 ft / 1 m	508.6 ft / 153.5 m
	16.4 ft / 5 m	101.7 ft / 30.7 m
	32.8 ft / 10 m	50.9 ft / 15.3 m
14 AWG x 2	3.28 ft / 1 m	789.7 ft / 240.7 m
	16.4 ft / 5 m	157.9 ft / 48.1 m
	32.8 ft / 10 m	79 ft / 24.1 m