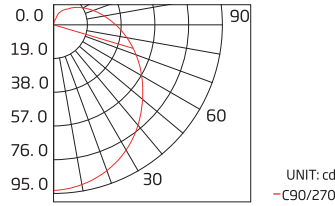


Aqueon® Neon Mono

24V DC ● ● ● ● ● ● ●



Beam Angle 151°

Aqueon NEON Mono is a horizontal bending flexible neon LED Strip. Made from structurally superior Silicone encapsulation; Aqueon NEON offers resistance to UV exposure, chemical, and the most challenging exterior environments. Premium NICHIA LED's with SDCM3 binning for accurate color rendering and exceptional lifetime consistency. Available in 22K, 27K, 30K, 35K, 40K, 57K, Red, Green, Blue, Amber.

FEATURES

- End to end Continuous Illumination
- Constant Voltage DC 24V
- Horizontal Bending Only - Min Bending Diameter 4.72 in (120mm)
- Flood and Vibration Proof
- Cuttable every: **Mono, Green & Blue** - 3.28in(83.3mm)/**Red & Amber** - 4.92in(125mm)
- Max Run Length- 49.2ft (15m)
- Available in Mono 22K, 27K, 30K, 35K, 40K, 57K, Red, Green, Blue, Amber
- Ambient Working Temperature: -40~131°F / -40~55°C
- Storage Temperature: -40~140°F / -40~60°C
- 5 Year Limited Warranty - 50,000 hrs white, 100,000 hrs color
- IP68 Waterproof Connectors
- IK10 Rated, CE-EMC, cUL Listed, UL Listed 676, UL Listed 2108, IP68

PART NUMBER & SPECIFICATIONS

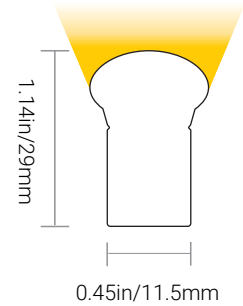
Aqueon Neon® Monochrome

Part #	Color	W/ft	W/m	CRI	lm/ft	lm/m	lm/W
054020	2200K	3.66	12	>80	116	380	31.69
054021	2700K	3.66	12	>80	143	470	39.07
054022	3000K	3.66	12	>80	143	470	39.07
054023	3500K	3.66	12	>80	143	470	39.07
054024	4000K	3.66	12	>80	143	470	39.07
054025	5700K	3.66	12	>80	143	470	39.07
054026	Red	2.44	8	>80	43	140	17.62
054027	Green	3.66	12	>80	113	370	30.87
054028	Blue	3.66	12	>80	24	80	6.56
054029	Amber	2.44	8	>80	43	140	17.62

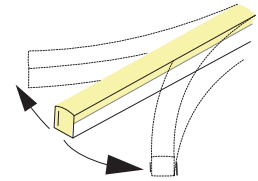
ORGANIC LIGHTING®

Project

Date

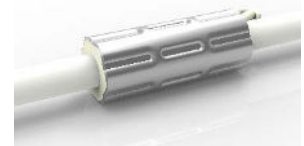


HORIZONTAL BENDING



ANTI-WICKING

All connections include a ferrule on the power feed to prevent water wicking through the connection point.



Specifications may be modified or improved without notification

Organic Lighting | 12203 Magnolia Avenue, Suite 1, Riverside CA 92503 | 626.969.6140 | www.organiclighting.com | 12/2024 V7



Aqueon® Neon Mono



CONNECTORS & ACCESSORIES

Factory assembled 2-wired Aqueon Mono IP68 submersible accessories include end caps, extension cords and connectors with customizable cord lengths. IP67 self assembly connectors are also available.

Project

Date

FACTORY ASSEMBLED IP68 CONNECTORS

Silicone Injection - molded connectors (2 wire)



**End Feed
IP68 Connector**
#054040-CU16



**Left Feed
IP68 Connector**
#054041-CU16



**Right Feed
IP68 Connector**
#054042-CU16



**Bottom Feed
IP68 Connector**
#054043-CU16



**T-Connector
IP68 Connector**
#054044-CU16



**Jumper
IP68 Connector**
#054045-CU16



**End Cap
IP68 Connector**
#054046

FIELD ASSEMBLY IP67 CONNECTORS

Snap Connectors (2 wire)



**End Feed
IP67 Connector**
#054040S-CU16



**Left Feed
IP67 Connector**
#054041S-CU16



**Right Feed
IP67 Connector**
#054042S-CU16



**Bottom Feed
IP67 Connector**
#054043S-CU16



**T-Connector
IP67 Connector**
#054044S-CU16



**Jumper
IP67 Connector**
#054045S-CU16



**End Cap
IP67 Connector**
#054046S

Specifications may be modified or improved without notification



Aqueon® Neon Mono

POWER SUPPLIES, MOUNTINGS & EXTRUSIONS



Project

Date

POWER SUPPLIES - 24V

Forward Phase, Reverse Phase, & 0-10V Dimming Drivers. Remote enclosures available.

Part #	Ingress	Voltage	Wattage	Dimensions (inches / mm)	Description
045001	IP67	100-305V	20W	7.6 x 1.18 x 0.79 / 193 x 30 x 20	Dimmable LED Driver
045002	IP67	100-305V	40W	5.83 x 1.57 x 0.87 / 148 x 40 x 22	Dimmable LED Driver
045003	IP67	120-277V	60W	6.3 x 2.24 x 1.5 / 160 x 57 x 38	Dimmable LED Driver
045004	IP67	120-277V	75W	6.3 x 2.24 x 1.5 / 160 x 57 x 38	Dimmable LED Driver
045005	IP67	120-277V	96W	7.6 x 2.24 x 1.5 / 193 x 57 x 38	Dimmable LED Driver
045006	IP67	120-277V	200W	10.1 x 3.03 x 1.8 / 257 x 77 x 46	Dimmable LED Driver
045007	IP67	120-277V	300W	11.9 x 3.03 x 1.8 / 302 x 77 x 46	Dimmable LED Driver

20W -60W Dimmable Driver



ENCLOSURES

Part #	Ingress	Dimensions (inches / mm)	Description
045008	IP67	9.4 x 2.6 x 1.9 / 239 x 66 x 48	20W Enclosure
045009	IP67	11.02 x 4.05 x 2.2 / 280 x 103 x 56	40W Enclosure
045010	IP67	11.02 x 4.05 x 2.2 / 280 x 103 x 56	60W Enclosure
045011	IP67	11.02 x 4.05 x 2.2 / 280 x 103 x 56	75W Enclosure
045012	IP67	11.02 x 4.05 x 2.2 / 280 x 103 x 56	96W Enclosure
045013	IP67	16.7 x 9.8 x 2.3 / 424 x 249 x 58	200W Enclosure
045014	IP67	16.7 x 9.8 x 2.3 / 424 x 249 x 58	300W Enclosure

75W -300W Dimmable Driver



MOUNTINGS & EXTRUSIONS

PET and Aluminum Mounting Channels to Match any Installation

Aluminum Channel



- High Quality Aluminum
- Lightweight
- Cost Effective
- Available with a Flange for Recessed Installation

3.25ft (1m) L - #054060

Flanged Aluminum Channel



- High Quality Aluminum
- Lightweight
- Cost Effective
- Flange for Recessed Installation

3.25ft (1m) L - #054061

Serrated Aluminum Channel



- Continuous & Strong Gripping
- Lightweight
- Easy to Install & Dismantle
- For Suspended Installations
- Available with a Flange for Recessed Installation

3.25ft (1m) L - #054062

Flanged Serrated Aluminum Channel



- Lightweight
- Easy to Install & Dismantle
- Continuous & Strong Gripping
- Flange for Recessed Installation

3.25ft (1m) L - #054063

Bendable Serrated Aluminum Channel



- High Quality Aluminum
- Easy to Install & Dismantle
- Continuous & Strong Gripping
- Memory Retaining
- Perfect for Curved Installations

3.25ft (1m) L - #054064

Specifications may be modified or improved without notification



Aqueon® Neon Mono

WIRING DIAGRAMS

SINGLE-END FEED

