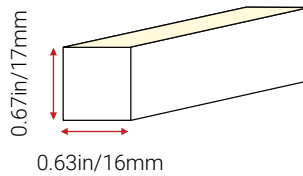
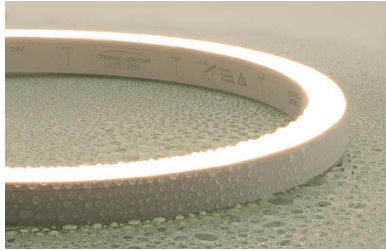


# Aqueon® Diffuse Tunable White

Standard & High Power 24V DC 20-57



Tunable White (22K-57K) allows for subtle CCT changes from warm 2200K CCT to a very cool 5700K for a decorative glow that changes with the mood of a space. A new standard of flexible light; superior standards new materials, new methods and advanced circuit design to create a flood proof; vibration proof seamless light. Our constant current design ensures to maintain a full illumination in continuous lengths up to 49ft(15m). Available in both vertical and horizontal bending. IP67 or IP68 submersible. Single bin for accurate color rendering, minimal color shift and exceptional color consistency, with a CRI of 90.

## FEATURES

- IK10, cUL Listed, UL Listed 676, UL Listed 2108 - Submersible / IP68
- Horizontal or Vertical bending options
- End to end continuous illumination
- Up to 49.2ft(15m) continuous runs; Flood and vibration proof
- White tuning range from 2200K to 5700K
- Standard Output; 2.74W/ft(9W/ft) / High Output 3.66W/ft (12W/m)
- Cuttable every 2.46"(62.5mm) / 3.28"(83.3mm)
- 5.5"(140mm) minimum bending radius
- 5 year limited warranty; 60,000 hr LED lifetime
- Dimmable with Pulse Width Modulation & DMX
- UV/IR protected Silicone encapsulation
- Ambient working temperature -40°F~131°F(-40°C~55°C)

## PART NUMBER & SPECIFICATIONS

Part #	Color	CRI	lm/ft	lm/m	Max Run	W/ft	W/m
<b>Aqueon® Diffuse Tunable White - Horizontal Bend</b>							
052228	2200K-5700K	>90	112	365	49.2ft	15m	2.74 9
<b>High Power Aqueon® Diffuse Tunable White - Horizontal Bend</b>							
052228-12	2200K-5700K	>90	149	490	32.8ft	10m	3.66 12
<b>Aqueon® Diffuse Tunable White - Vertical Bend</b>							
052227	2200K-5700K	>90	112	365	49.2ft	15m	2.74 9
<b>High Power Aqueon® Diffuse Tunable White - Vertical Bend</b>							
052227-12	2200K-5700K	>90	149	490	32.8ft	10m	3.66 12

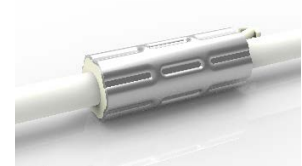


Project

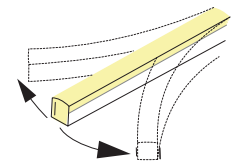
Date

## ANTI-WICKING

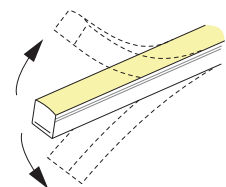
All connections include a ferrule on the power feed to prevent water wicking through the connection point.



## HORIZONTAL BENDING



## VERTICAL BENDING



Specifications may be modified or improved without notification



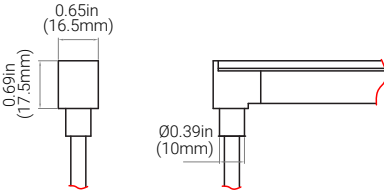
## CONNECTORS & ACCESSORIES

Factory assembled 3-wired Aqueon IP68 submersible accessories include end caps, extension cords and connectors with customizable cord lengths. IP67 self assembly connectors are also available.

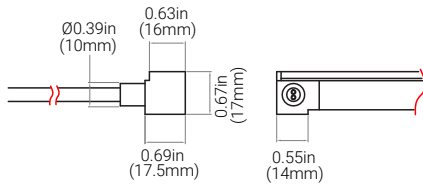
Project

Date

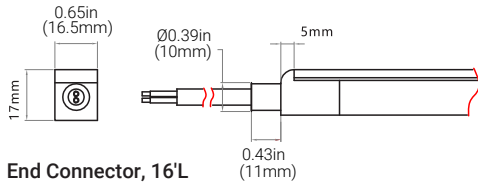
### FACTORY ASSEMBLED IP68 CONNECTORS



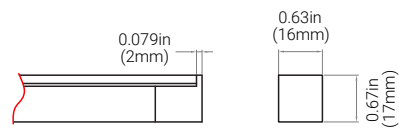
**Bottom Feed Connector, 16'L**  
#052255-CU16



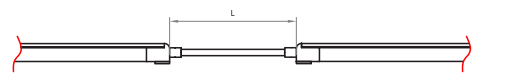
**Side Feed Connector, 16'L**  
#052257-CU16



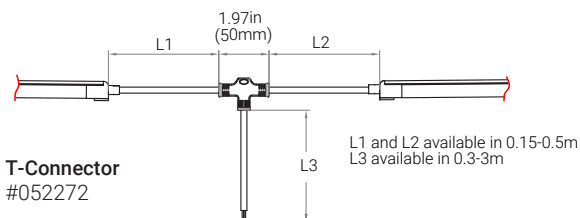
**End Connector, 16'L**  
#052256-CU16



**End Cap**  
#052286

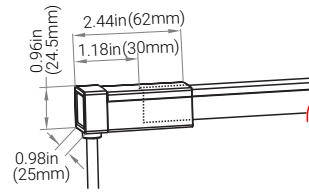


**Extension**  
#052270 L available in 0.3m-1m

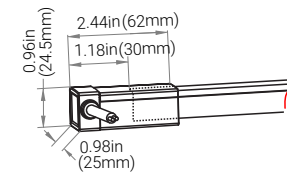


**T-Connector**  
#052272 L1 and L2 available in 0.15-0.5m  
L3 available in 0.3-3m

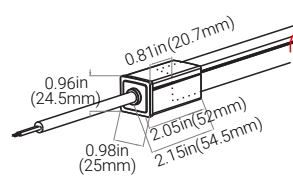
### FIELD ASSEMBLY SNAP IP67 CONNECTORS



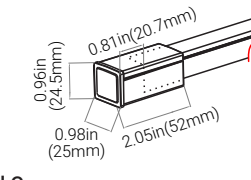
**Bottom Snap Connector, 16'L**  
#052255S-CU16



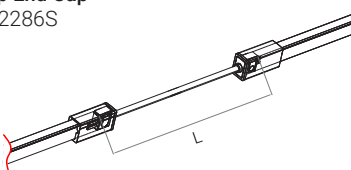
**Side Feed Snap Connector, 16'L**  
#052257S-CU16



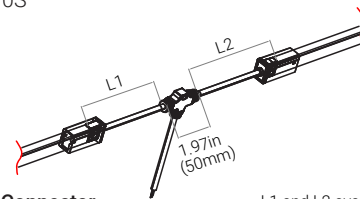
**End Snap Connector, 16'L**  
#052256S-CU16



**Snap End Cap**  
#052286S



**Snap Extension**  
#052270S L available in 0.3m, 1m, 3m



**Snap T-Connector**  
#052272S L1 and L2 available in 0.3m

Specifications may be modified or improved without notification

# Aqueon® Diffuse Tunable White Standard & High Power



## POWER SUPPLIES - 24V

Forward Phase, Reverse Phase, & 0-10V Dimming Drivers. Remote enclosures available.

Part #	Ingress	Voltage	Wattage	Dimensions (inches / mm)	Description
045001	IP67	100-305V	20W	7.6 x 1.18 x 0.79 / 193 x 30 x 20	Dimmable LED Driver
045002	IP67	100-305V	40W	5.83 x 1.57 x 0.87 / 148 x 40 x 22	Dimmable LED Driver
045003	IP67	120-277V	60W	6.3 x 2.24 x 1.5 / 160 x 57 x 38	Dimmable LED Driver
045004	IP67	120-277V	75W	6.3 x 2.24 x 1.5 / 160 x 57 x 38	Dimmable LED Driver
045005	IP67	120-277V	96W	7.6 x 2.24 x 1.5 / 193 x 57 x 38	Dimmable LED Driver
045006	IP67	120-277V	200W	10.1 x 3.03 x 1.8 / 257 x 77 x 46	Dimmable LED Driver
045007	IP67	120-277V	300W	11.9 x 3.03 x 1.8 / 302 x 77 x 46	Dimmable LED Driver

## ENCLOSURES

Part #	Ingress	Dimensions (inches / mm)	Description
045008	IP67	9.4 x 2.6 x 1.9 / 239 x 66 x 48	20W Enclosure
045009	IP67	11.02 x 4.05 x 2.2 / 280 x 103 x 56	40W Enclosure
045010	IP67	11.02 x 4.05 x 2.2 / 280 x 103 x 56	60W Enclosure
045011	IP67	11.02 x 4.05 x 2.2 / 280 x 103 x 56	75W Enclosure
045012	IP67	11.02 x 4.05 x 2.2 / 280 x 103 x 56	96W Enclosure
045013	IP67	16.7 x 9.8 x 2.3 / 424 x 249 x 58	200W Enclosure
045014	IP67	16.7 x 9.8 x 2.3 / 424 x 249 x 58	300W Enclosure
PC-JBOX	IP67	4.25 x 1.63 x 1.25 / 108 x 41 x 32	Waterproof J-Box

## DMX CONTROLLER

Part #	Description
011343	100W Digital Controller
011344	180W Digital Controller
011345	720W Digital Controller
011341	Digital Controller & Power Supply Combination
011410	Nicolaude DE3 DMX 512 Controller
011403	Nicolaude DINA-DR1 DMX 512 Controller

## MOUNTINGS & EXTRUSIONS

Mounting Channels to Match any Installation

### Aluminum Profile



- High Quality Aluminum
- Lightweight
- Cost Effective
- Warp/corrosion resistant

1.38in(35mm) L - #053001  
39.37in(1000mm) L - #053000

### Flanged Aluminum Profile



- High Quality Aluminum
- Lightweight
- Cost Effective
- Flange for Recessed Installation

1.38in(35mm) L - #053003  
39.37in(1000mm) L - #053002

### Flanged Internal Serrated Aluminum Profile



- Lightweight
- Easy to Install & Dismantle
- Continuous & Strong Gripping
- Flange for Recessed Installation

0.79in(20mm) L - #053011  
39.37in(1000mm) L - #053010

### Internal Serrated Aluminum Profile



- Continuous & Strong Gripping
- Lightweight
- Easy to Install & Dismantle
- For Suspended Installations

0.79in(20mm) L - #053009  
39.37in(1000mm) L - #053008

### Bendable Serrated Aluminum Profile



- High Quality Aluminum
- Easy to Install & Dismantle
- Continuous & Strong Gripping
- Memory Retaining
- Perfect for Curved Installations

19.68in(500mm) L - #053013  
39.37in(1000mm) L - #053012

### Thickened Plastic Profile



- Plastic Profile 0.12in(3mm) thick
- Lightweight
- Cost Effective
- Rust & Corrosion Resistant

1.38in(35mm) L - #053005  
39.37in(1000mm) L - #053004

Project

---

Date

### 20W -60W Dimmable Driver



### 75W -300W Dimmable Driver



### Digital Controller (100W, 180W, 720W)



### Nicolaude DE3 DMX 512 Controller



Specifications may be modified or improved without notification



## MOUNTINGS & EXTRUSIONS (CONTINUED)

### Raceway Aluminum Profile



- Surface-mounted
- Serrated Aluminum Profile

39.37in(1000mm) L  
#053021

### Suspended Raceway Aluminum Profile



- Suspended
- Serrated Aluminum Profile

39.37in(1000mm) L  
#053022

### Raceway End Cap



#053023

### Raceway Splice Connector



#053024

### Stainless Steel Clip



- High Quality Stainless Steel
- Cost Effective

1.38in(35mm) L  
#053020

### Silicone 3D Bend Profile White



- Silicone
- Bendable Anole Profile

39.37in(1000mm) L  
#053026-WH

### Silicone 3D Bend Profile Black



- Silicone
- Bendable Anole Profile

39.37in(1000mm) L  
#053026-BL

## CABLE REQUIREMENT

The Aqueon® LED strips need a minimum voltage at the beginning of the LED strip to function according to the specifications. The table below gives an indication of the maximum cable length based on the cable thickness. The standard starter cable is (18 AWG), see table below for max cable lengths.

In case the required length is longer than the length mentioned in this cable, it is recommended to cut the starter cable down to 1ft (0.3m) and splice a larger gauge cable. Please contact your distributor for a detailed cable calculation.

Cable X Information	LED Strip	Max. Cable Length
		24V
*18 AWG *standard	3.28 ft / 1m 16.4 ft / 5m 32.8 ft / 10m 49.2 ft / 15m	159ft / 48m 32ft / 10m 18ft / 5.5m 11.5ft / 3.5m
16 AWG	3.28 ft / 1m 16.4 ft / 5m 32.8 ft / 10m 49.2 ft / 15m	260ft / 79m 52ft / 16m 29.5ft / 9m 20ft / 6m
14 AWG	3.28 ft / 1m 16.4 ft / 5m 32.8 ft / 10m 49.2 ft / 15m	416ft / 127m 82ft / 25m 47.5ft / 14.5m 101.7ft / 31m

## ELECTRICAL DETAILS

