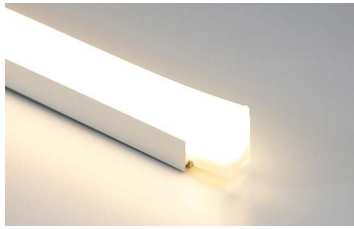


# Aqueon® 3D Diffuse Mono

Standard & High Power 24V DC 22 27 30 35 40 57 R G B A



Aqueon 3D delivers up to 49 feet of low-glare, tri-surface illumination with precise diffusion & uniform light intensity across all three planes. Designed for advanced lighting applications, it enables both direct and indirect illumination from a single source. IP68 submersible UV & chemical resistant encapsulation. Premium

Nichia LEDs with 3 step MacAdam CCT (Single bin) for accurate color rendering, minimal color shift and exceptional color consistency. Aqueon 3D incorporates cutting-edge mechanical and circuit design innovations, leveraging the proven innovations of the Aqueon family, delivering unparalleled performance and versatile lighting solutions.

## FEATURES

- IK07, UL Listed 676, cUL Listed, UL Listed 2108 - Submersible / IP68
- 272° diffused illumination with no visible LEDs
- Up to 49.2ft(15m) continuous runs; Flood and vibration proof
- Cuttable every 2.19"(55.6mm)-White, Green, Blue, 2.81"(71.4mm)- Red & 3.28"(83.3mm) - Amber
- 2200K, 2700K, 3000K, 3500K, 4000K, 5700K, Red, Green, Blue & Wildlife Amber
- Ultra low energy; 2.74W/ft (9 W/m)
- 6"(150mm) minimum bending radius
- 5 year limited warranty; 60,000hrs white, 100,000hrs color
- Dimmable with Pulse Width Modulation & DMX
- UV/IR protected Silicone material
- Ambient working temperature -40°F - 131°F (-40°C ~ 55°C)

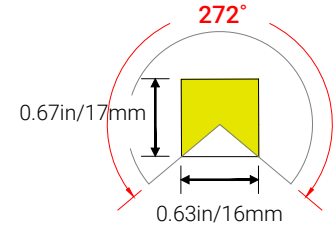
## PART NUMBER & SPECIFICATIONS

Part #	Color	CRI	lm/ft	lm/m	Max Run	W/ft	W/m
<b>Standard Aqueon® 3D Diffuse Mono</b>							
053028	2200K	>95	194	638	49.2ft	15m	2.74 9
053029	2700K	>95	240	788	49.2ft	15m	2.74 9
053030	3000K	>95	251	825	49.2ft	15m	2.74 9
053031	3500K	>95	251	825	49.2ft	15m	2.74 9
053032	4000K	>95	251	825	49.2ft	15m	2.74 9
053033	5700K	>95	251	825	49.2ft	15m	2.74 9
053040	Red	>95	104	340	49.2ft	15m	2.74 9
053041	Green	>95	194	638	49.2ft	15m	2.74 9
053042	Blue	>95	55	180	49.2ft	15m	2.74 9
053043	Amber	>95	74	240	49.2ft	15m	2.74 9
<b>High Power Aqueon® 3D Diffuse Mono</b>							
053028-12	2200K	>95	259	850	49.2ft	15m	3.66 12
053029-12	2700K	>95	320	1050	49.2ft	15m	3.66 12
053030-12	3000K	>95	335	1100	49.2ft	15m	3.66 12
053031-12	3500K	>95	335	1100	49.2ft	15m	3.66 12
053032-12	4000K	>95	335	1100	49.2ft	15m	3.66 12
053033-12	5700K	>95	335	1100	49.2ft	15m	3.66 12
053041-12	Green	>95	259	850	49.2ft	15m	3.66 12
053042-12	Blue	>95	73	240	49.2ft	15m	3.66 12
053043-12	Amber	>95	98	320	49.2ft	15m	3.66 12

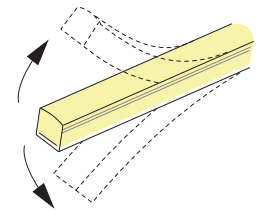
Specifications may be modified or improved without notification

Project

Date

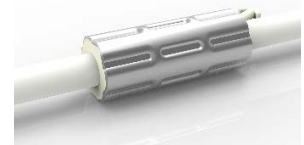


## VERTICAL BENDING



## ANTI-WICKING

All connections include a ferrule on the power feed to prevent water wicking through the connection point.



# Aqueon® 3D Diffuse Mono Standard & High Power

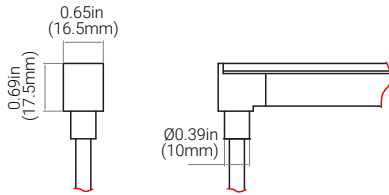
## CONNECTORS & ACCESSORIES

Factory assembled 2-wired Aqueon Mono IP68 submersible accessories include end caps, extension cords and connectors with customizable cord lengths. IP67 self assembly connectors are also available.

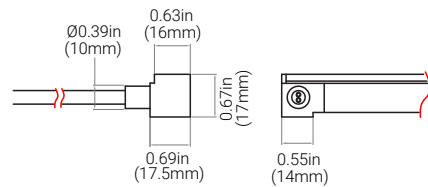
Project

Date

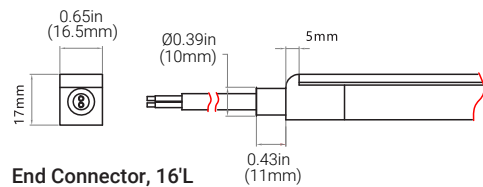
### FACTORY ASSEMBLED IP68 CONNECTORS



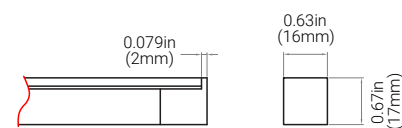
**Bottom Feed Connector, 16'L**  
#052250-CU16



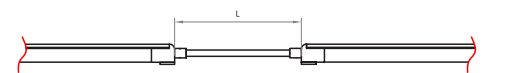
**Side Feed Connector, 16'L**  
#052263-CU16



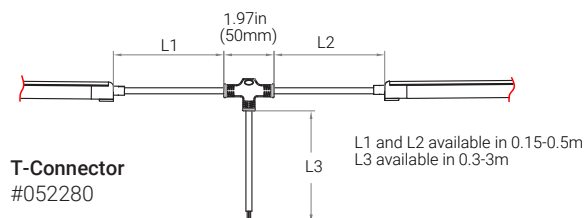
**End Connector, 16'L**  
#052278-CU16



**End Cap**  
#052286

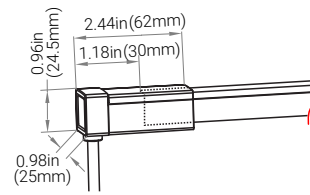


**Extension**  
#052279 L available in 0.3m-1m

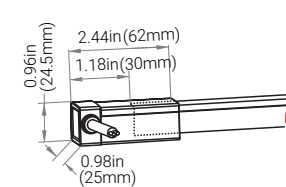


**T-Connector**  
#052280 L1 and L2 available in 0.15-0.5m  
L3 available in 0.3-3m

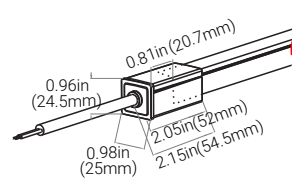
### FIELD ASSEMBLY SNAP IP67 CONNECTORS



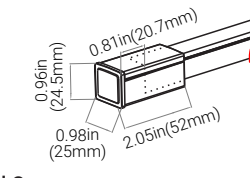
**Bottom Snap Connector, 16'L**  
#052250S-CU16



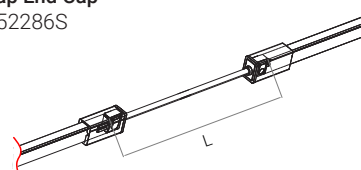
**Side Feed Snap Connector, 16'L**  
#052263S-CU16



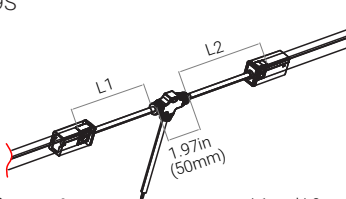
**End Snap Connector, 16'L**  
#052278S-CU16



**Snap End Cap**  
#052286S



**Snap Extension**  
#052279S L available in 0.3m, 1m, 3m



**Snap T-Connector**  
#052280S L1 and L2 available in 0.3m

Specifications may be modified or improved without notification

# Aqueon® 3D Diffuse Mono Standard & High Power

## POWER SUPPLIES - 24V

Forward Phase, Reverse Phase, & 0-10V Dimming Drivers. Remote enclosures available.

Part #	Ingress	Voltage	Wattage	Dimensions (inches / mm)	Description
045001	IP67	100-305V	20W	7.6 x 1.18 x 0.79 / 193 x 30 x 20	Dimmable LED Driver
045002	IP67	100-305V	40W	5.83 x 1.57 x 0.87 / 148 x 40 x 22	Dimmable LED Driver
045003	IP67	120-277V	60W	6.3 x 2.24 x 1.5 / 160 x 57 x 38	Dimmable LED Driver
045004	IP67	120-277V	75W	6.3 x 2.24 x 1.5 / 160 x 57 x 38	Dimmable LED Driver
045005	IP67	120-277V	96W	7.6 x 2.24 x 1.5 / 193 x 57 x 38	Dimmable LED Driver
045006	IP67	120-277V	200W	10.1 x 3.03 x 1.8 / 257 x 77 x 46	Dimmable LED Driver
045007	IP67	120-277V	300W	11.9 x 3.03 x 1.8 / 302 x 77 x 46	Dimmable LED Driver

## ENCLOSURES

Part #	Ingress	Dimensions (inches / mm)	Description
045008	IP67	9.4 x 2.6 x 1.9 / 239 x 66 x 48	20W Enclosure
045009	IP67	11.02 x 4.05 x 2.2 / 280 x 103 x 56	40W Enclosure
045010	IP67	11.02 x 4.05 x 2.2 / 280 x 103 x 56	60W Enclosure
045011	IP67	11.02 x 4.05 x 2.2 / 280 x 103 x 56	75W Enclosure
045012	IP67	11.02 x 4.05 x 2.2 / 280 x 103 x 56	96W Enclosure
045013	IP67	16.7 x 9.8 x 2.3 / 424 x 249 x 58	200W Enclosure
045014	IP67	16.7 x 9.8 x 2.3 / 424 x 249 x 58	300W Enclosure
PC-JBOX	IP67	4.25 x 1.63 x 1.25 / 108 x 41 x 32	Waterproof J-Box

## DMX CONTROLLER

Part #	Description
011343	100W Digital Controller
011344	180W Digital Controller
011345	720W Digital Controller
011341	Digital Controller & Power Supply Combination
011410	Nicolaude DE3 DMX 512 Controller
011403	Nicolaude DINA-DR1 DMX 512 Controller
050203	LT-200 SPI Controller - For Pixel
050205	DMX512 SPI Converter Decoder - For Pixel

## MOUNTINGS & EXTRUSIONS

Mounting Channels to Match any Installation

### Aluminum Channel



- High Quality Aluminum
- Lightweight
- Cost Effective

3.25ft (1m) L - #051694

### Thickened Plastic Profile



- Plastic Profile 0.12in(3mm) thick
- Lightweight
- Cost Effective
- Rust & Corrosion Resistant

1.38in (35mm) L - #053005

39.37in (1000mm) L - #053004

Project

Date

### 20W -60W Dimmable Driver



### 75W -300W Dimmable Driver



### Digital Controller (100W, 180W, 720W)



### Nicolaude DE3 DMX 512 Controller



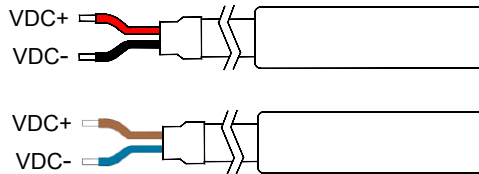
# Aqueon® 3D Diffuse Mono Standard & High Power

## CABLE REQUIREMENT

The Aqueon® LED strips need a minimum voltage at the beginning of the LED strip to function according to the specifications. The table below gives an indication of the maximum cable length based on the cable thickness. The standard starter cable is (18 AWG), see table below for max cable lengths. In case the required length is longer than the length mentioned in this cable, it is recommended to cut the starter cable down to 1ft (0.3m) and splice a larger gauge cable. Please contact your distributor for a detailed cable calculation.

Project

Date



Cable X Information	LED Strip	Max. Cable Length
		24V
18 AWG x 2 *Standard	3.28ft / 1m	632.1ft / 192.7m
	16.4ft / 5m	124.2ft / 37.8m
	32.8ft / 10m	62.4ft / 19.0m
	49.2ft / 15m	41.8ft / 12.7m
16 AWG x 2	3.28ft / 1m	1030ft / 314m
	16.4ft / 5m	202.3ft / 61.7m
	32.8ft / 10m	101.6ft / 31.0m
	49.2ft / 15m	68.1ft / 20.7m
14 AWG x 2	3.28ft / 1m	1615.3ft / 492.3m
	16.4ft / 5m	317.3ft / 96.7m
	32.8ft / 10m	159.4ft / 48.6m
	49.2ft / 15m	106.7ft / 32.5m