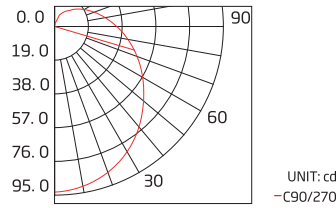


Aqueon® Neon Tunable White - Pixel

24V DC 22 - 57



Beam Angle 151°

White tuning allows for changing color of light from warm, to neutral, to cool for a desirable range in aesthetic. A new standard of flexible light; superior standards, new materials, new methods, military grade components and advanced circuit design to create flood proof; vibration proof, seamless light. Our constant current design ensures to maintain a full illumination in continuous lengths of up to 49ft. Available in horizontal bending only. IP67 or IP68 tested for use in the most adverse environments. Premium Nichia LEDs for accurate color rendering, minimal color shift and exceptional color consistency. Fully dimmable.

FEATURES

- End to end Continuous Illumination
- Constant Voltage DC 24V
- Horizontal Bending Only - Min Bending Diameter 4.72 in (120mm)
- Flood and Vibration Proof
- Cuttable every 6.56in (166.7mm)
- Max Run Length- 49.2ft (15m)
- Available in Tunable White 22K - 57K
- Ambient Working Temperature: -40~131°F / -40~55°C
- Storage Temperature: -40~140°F / -40~60°C
- 5 Year Limited Warranty - 50,000 hrs white, 100,000 hrs color
- IP68 Waterproof Connectors
- IK10 Rated, CE-EMC, cUL Listed, UL Listed 676, UL Listed 2108, IP68

PART NUMBER & SPECIFICATIONS

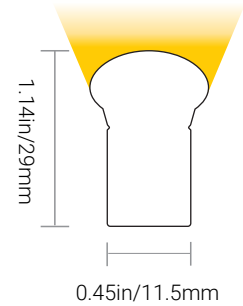
Aqueon Neon® Tunable White - Pixel

Part #	Color	W/ft	W/m	CRI	lm/ft	lm/m	lm/W
054138	2200K-5700K	2.66	12	>80	52-64	170-210	14.2-17.5

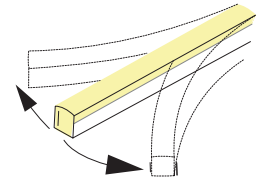
ORGANIC LIGHTING®

Project

Date

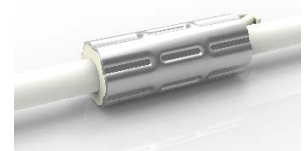


HORIZONTAL BENDING



ANTI-WICKING

All connections include a ferrule on the power feed to prevent water wicking through the connection point.



Specifications may be modified or improved without notification

Organic Lighting | 12203 Magnolia Avenue, Suite 1, Riverside CA 92503 | 626.969.6140 | www.organiclighting.com | 12/2024 V5



Aqueon® Neon Tunable White - Pixel

CONNECTORS & ACCESSORIES

Factory assembled 3-wired Aqueon IP68 submersible accessories include end caps, extension cords and connectors with customizable cord lengths. IP67 self assembly connectors are also available.

Project

Date

FACTORY ASSEMBLED IP68 CONNECTORS

Silicone Injection - molded connectors (3 wire)



End Feed
IP68 Connector
#054140-CU16



Left Feed
IP68 Connector
#054141-CU16



Right Feed
IP68 Connector
#054142-CU16



Bottom Feed
IP68 Connector
#054143-CU16



T-Connector
IP68 Connector
#054144-CU16



Jumper
IP68 Connector
#054145-CU16



End Cap
IP68 Connector
#054046

FIELD ASSEMBLY IP67 CONNECTORS

Snap Connectors (3 wire)



End Feed
IP67 Connector
#054140S-CU16



Left Feed
IP67 Connector
#054141S-CU16



Right Feed
IP67 Connector
#054142S-CU16



Bottom Feed
IP67 Connector
#054143S-CU16



T-Connector
IP67 Connector
#054144S-CU16



Jumper
IP67 Connector
#054145S-CU16



End Cap
IP67 Connector
#054046S

Specifications may be modified or improved without notification

Aqueon® Neon Tunable White - Pixel

POWER SUPPLIES, MOUNTINGS & EXTRUSIONS



Project

Date

POWER SUPPLIES - 24V

Forward Phase, Reverse Phase, & 0-10V Dimming Drivers. Remote enclosures available.

Part #	Ingress	Voltage	Wattage	Dimensions (inches / mm)	Description
045001	IP67	100-305V	20W	7.6 x 1.18 x 0.79 / 193 x 30 x 20	Dimmable LED Driver
045002	IP67	100-305V	40W	5.83 x 1.57 x 0.87 / 148 x 40 x 22	Dimmable LED Driver
045003	IP67	120-277V	60W	6.3 x 2.24 x 1.5 / 160 x 57 x 38	Dimmable LED Driver
045004	IP67	120-277V	75W	6.3 x 2.24 x 1.5 / 160 x 57 x 38	Dimmable LED Driver
045005	IP67	120-277V	96W	7.6 x 2.24 x 1.5 / 193 x 57 x 38	Dimmable LED Driver
045006	IP67	120-277V	200W	10.1 x 3.03 x 1.8 / 257 x 77 x 46	Dimmable LED Driver
045007	IP67	120-277V	300W	11.9 x 3.03 x 1.8 / 302 x 77 x 46	Dimmable LED Driver

20W - 60W Dimmable Driver



75W - 300W Dimmable Driver



ENCLOSURES

Part #	Ingress	Dimensions (inches / mm)	Description
045008	IP67	9.4 x 2.6 x 1.9 / 239 x 66 x 48	20W Enclosure
045009	IP67	11.02 x 4.05 x 2.2 / 280 x 103 x 56	40W Enclosure
045010	IP67	11.02 x 4.05 x 2.2 / 280 x 103 x 56	60W Enclosure
045011	IP67	11.02 x 4.05 x 2.2 / 280 x 103 x 56	75W Enclosure
045012	IP67	11.02 x 4.05 x 2.2 / 280 x 103 x 56	96W Enclosure
045013	IP67	16.7 x 9.8 x 2.3 / 424 x 249 x 58	200W Enclosure
045014	IP67	16.7 x 9.8 x 2.3 / 424 x 249 x 58	300W Enclosure

Digital Controller (100W, 180W, 720W)



DMX CONTROLLER

Part #	Description
011343	100W Digital Controller
011344	180W Digital Controller
011345	720W Digital Controller
011341	Digital Controller & Power Supply Combination
011420	Nicolaude DE3 DMX 512 Controller
011403	Nicolaude DINA-DR1 DMX 512 Controller
050203	LT-200 SPI Controller - For Pixel
050205	DMX512 SPI Converter Decoder - For Pixel

Nicolaude DE3 DMX 512 Controller



MOUNTINGS & EXTRUSIONS

PET and Aluminum Mounting Channels to Match any Installation

Aluminum Channel



- High Quality Aluminum
- Lightweight
- Cost Effective
- Available with a Flange for Recessed Installation

3.25ft (1m) L - #054060

Flanged Aluminum Channel



- High Quality Aluminum
- Lightweight
- Cost Effective
- Flange for Recessed Installation

3.25ft (1m) L - #054061

Flanged Serrated Aluminum Channel



- Lightweight
- Easy to Install & Dismantle
- Continuous & Strong
- Gripping
- Flange for Recessed Installation

3.25ft (1m) L - #054063

Serrated Aluminum Channel



- Continuous & Strong Gripping
- Lightweight
- Easy to Install & Dismantle
- For Suspended Installations
- Available with a Flange for Recessed Installation

3.25ft (1m) L - #054062

Bendable Serrated Aluminum Channel



- High Quality Aluminum
- Easy to Install & Dismantle
- Continuous & Strong Gripping
- Memory Retaining
- Perfect for Curved Installations

3.25ft (1m) L - #054064

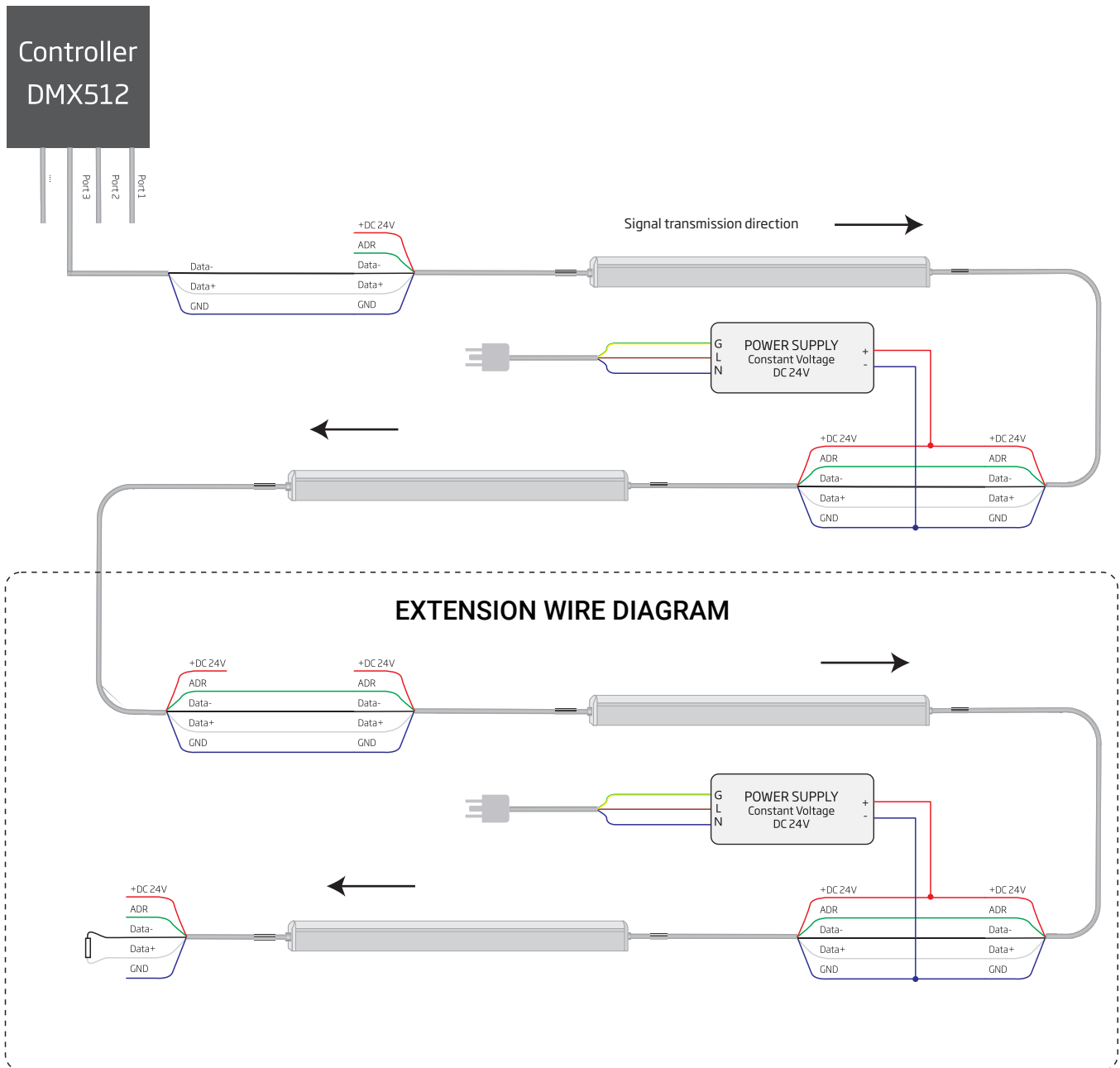
Specifications may be modified or improved without notification

Organic Lighting | 12203 Magnolia Avenue, Suite 1, Riverside CA 92503 | 626.969.6140 | www.organiclighting.com | 12/2024 V5



Aqueon® Neon Tunable White - Pixel

WIRING DIAGRAMS



Specifications may be modified or improved without notification