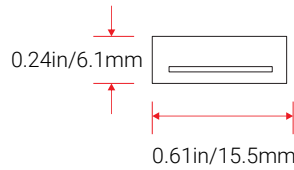


# Aqueon® Flat Tunable White

24V DC ●-●



A new standard of flexible light; superior standards new materials, new methods, military grade components and advanced circuit design to create a flood proof; vibration proof seamless light. Our constant current design ensures to maintain a full illumination in continuous lengths up to 49ft. IP67 connections. Premium Nichia LEDs. Single bin for accurate color rendering, minimal color shift and exceptional color consistency, with a CRI of 95. Full dimmable.

## FEATURES

- Wet Location; UL Listed, 1598
- Vertical Bending
- End to end continuous illumination
- Up to 49.2ft(15m) continuous runs
- Cuttable every 3.25"(82.6mm)
- Tunable White 2200K - 6500K
- 2"(50mm) minimum bending diameter; 1"(25mm) minimum bending radius
- 5 year limited warranty; 60,000 hrs white, 100,000 hrs color LED lifetime
- Dimmable with Pulse Width Modulation & DMX
- UV/IR protected PVC encapsulation
- Ambient working temperature -40°F~131°F (-40°C~55°C)

## PART NUMBER & SPECIFICATIONS

### Aqueon® Flat Tunable White

Part #	Color	CRI	lm/ft	lm/m	Max Run	W/ft	W/m
051640	2200-6500K	>95	62	205	49.2ft 15m	1.83	6

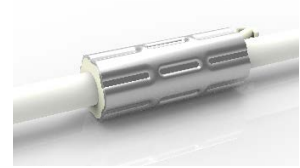
ORGANIC LIGHTING®

Project

Date

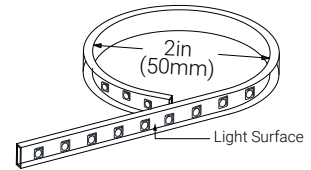
## ANTI-WICKING

All connections include a ferrule on the power feed to prevent water wicking through the connection point.

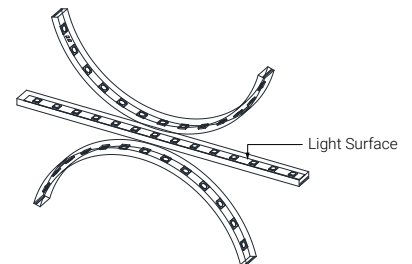


## VERTICAL BENDING

Minimum bend diameter 2in (50mm).



The light can only be bent along the light surface.



Do not bend smaller than allowed minimum bend diameter.

# Aqueon® Flat Tunable White

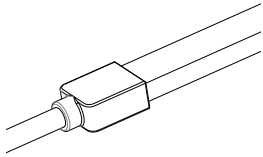
## CONNECTORS & ACCESSORIES

Aqueon IP67 accessories include end caps, extension cords and connectors with customizable cord lengths. Snap accessories are field installable.

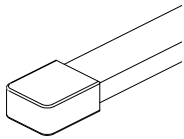
Project

Date

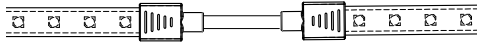
### FACTORY ASSEMBLED IP68 CONNECTORS



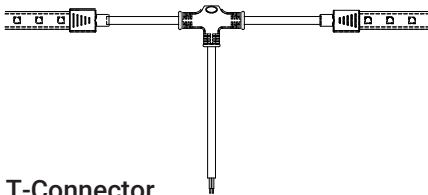
**End Connector, 16'L (4.9m)**  
#051656-CU16



**End Cap**  
#051686

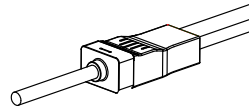


**Extension**  
#051659

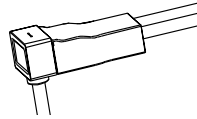


**T-Connector**  
#051658

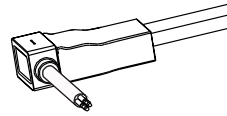
### FIELD ASSEMBLY SNAP ON IP67 CONNECTORS



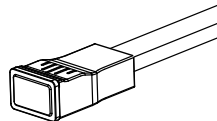
**End Snap Connector, 16'L (4.9m)**  
#051666S-CU16



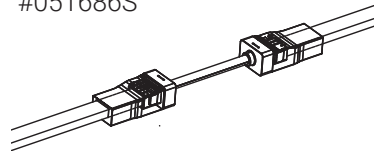
**Bottom Snap Connector, 16'L (4.9m)**  
#051605S-CU16



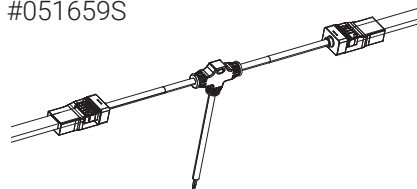
**Side Snap Connector, 16'L (4.9m)**  
#051606S-CU16



**Snap End Cap**  
#051686S



**Snap Extension**  
#051659S



**Snap T-Connector**  
#051658S

# Aqueon® Flat Tunable White

## POWER SUPPLIES, MOUNTINGS & EXTRUSIONS

### POWER SUPPLIES - 24V

Forward Phase, Reverse Phase, & 0-10V Dimming Drivers. Remote enclosures available.

Part #	Ingress	Voltage	Wattage	Dimensions (inches / mm)	Description
045001	IP67	100-305V	20W	7.6 x 1.18 x 0.79 / 193 x 30 x 20	Dimmable LED Driver
045002	IP67	100-305V	40W	5.83 x 1.57 x 0.87 / 148 x 40 x 22	Dimmable LED Driver
045003	IP67	120-277V	60W	6.3 x 2.24 x 1.5 / 160 x 57 x 38	Dimmable LED Driver
045004	IP67	120-277V	75W	6.3 x 2.24 x 1.5 / 160 x 57 x 38	Dimmable LED Driver
045005	IP67	120-277V	96W	7.6 x 2.24 x 1.5 / 193 x 57 x 38	Dimmable LED Driver
045006	IP67	120-277V	200W	10.1 x 3.03 x 1.8 / 257 x 77 x 46	Dimmable LED Driver
045007	IP67	120-277V	300W	11.9 x 3.03 x 1.8 / 302 x 77 x 46	Dimmable LED Driver

### ENCLOSURES

Part #	Ingress	Dimensions (inches / mm)	Description
045008	IP67	9.4 x 2.6 x 1.9 / 239 x 66 x 48	20W Enclosure
045009	IP67	11.02 x 4.05 x 2.2 / 280 x 103 x 56	40W Enclosure
045010	IP67	11.02 x 4.05 x 2.2 / 280 x 103 x 56	60W Enclosure
045011	IP67	11.02 x 4.05 x 2.2 / 280 x 103 x 56	75W Enclosure
045012	IP67	11.02 x 4.05 x 2.2 / 280 x 103 x 56	96W Enclosure
045013	IP67	16.7 x 9.8 x 2.3 / 424 x 249 x 58	200W Enclosure
045014	IP67	16.7 x 9.8 x 2.3 / 424 x 249 x 58	300W Enclosure

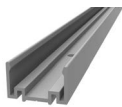
### DMX CONTROLLER

Part #	Description
011343	100W Digital Controller
011344	180W Digital Controller
011345	720W Digital Controller
011341	Digital Controller & Power Supply Combination
011420	Nicolaude DE3 DMX 512 Controller
011403	Nicolaude DINA-DR1 DMX 512 Controller
050203	LT-200 SPI Controller - For Pixel
050205	DMX512 SPI Converter Decoder - For Pixel

### MOUNTINGS & EXTRUSIONS

Mounting Channels to Match any Installation

#### Aluminum Channel



- High Quality Aluminum
- Lightweight
- Cost Effective

39.37in(1000mm) L - #051694

#### Clear Lensed Channel, 1/2" H



- Light-weight
- Easy to Install & Dismantle
- 1/2" High, 3/4" available
- Clear lens, frosted lens available.

39.37in(1000mm) L - #051695

#### Clear Lensed Channel, 3/4" H



- Light-weight
- Easy to Install & Dismantle
- 1/2" High, 3/4" available
- Clear lens, frosted lens available.

39.37in(1000mm) L - #51696

#### Frosted Lensed Channel, 1/2" H



- Light-weight
- Easy to Install & Dismantle
- 1/2" High, 3/4" available
- Clear lens, frosted lens available
- available

39.37in(1000mm) L - #051697

#### Frosted Lensed Channel, 3/4" H



- Light-weight
- Easy to Install & Dismantle
- 1/2" High, 3/4" available
- Clear lens, frosted lens available

39.37in(1000mm) L - #51698

#### PVC Mounting Channel



- Light-weight
- Self adhesive

48in(1219mm) L - #037006



Project

Date

#### 20W-60W Dimmable Driver



#### 75W-300W Dimmable Driver



#### DMX512 SPI Converter Decoder



#### LT-200 SPI Controller



Specifications may be modified or improved without notification

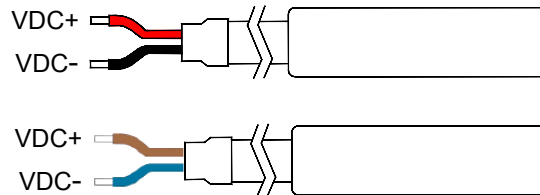


# Aqueon® Flat Tunable White

## CABLE REQUIREMENT

The Aqueon® LED strips need a minimum voltage at the beginning of the LED strip to function according to the specifications. The table below gives an indication of the maximum cable length based on the cable thickness. The standard starter cable (20 AWG) has a cable length of 16ft(4.88m).

In case the required length is longer than the length mentioned in this cable, it is recommended to cut the starter cable down to 1ft and splice a larger gauge cable. Please contact your distributor for a detailed cable calculation.



Cable X Information	LED Strip	Max. Cable Length
		24V
20 AWG x 2	3.28 ft / 1m	303 ft / 92.35m
	16.4 ft / 5m	57 ft / 17.37m
	32.8 ft / 10m	36 ft / 10.98m
	49.2 ft / 15m	20 ft / 6.1m
	65.6 ft / 20m	16 ft / 4.9m
18 AWG x 2	3.28 ft / 1m	457 ft / 139.3m
	16.4 ft / 5m	86 ft / 26.21m
	32.8 ft / 10m	56 ft / 17.07m
	49.2 ft / 15m	35 ft / 10.67m
	65.6 ft / 20m	25 ft / 7.62m
16 AWG x 2	3.28 ft / 1m	914 ft / 278.6m
	16.4 ft / 5m	172 ft / 52.43m
	32.8 ft / 10m	90 ft / 27.43m
	49.2 ft / 15m	60 ft / 18.3m
	65.6 ft / 20m	40 ft / 12.2m
14 AWG x 2	3.28 ft / 1m	1521 ft / 463.6m
	16.4 ft / 5m	287 ft / 87.5m
	32.8 ft / 10m	140 ft / 42.67m
	49.2 ft / 15m	96 ft / 29.26m
	65.6 ft / 20m	70 ft / 21.34m