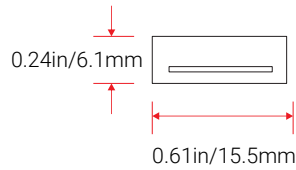


# Aqueon® Flat RGB/RGBW

24V DC 



A new standard of flexible light; superior standards new materials, new methods, military grade components and advanced circuit design to create a flood proof; vibration proof seamless light. Our constant current design ensures to maintain a full illumination in continuous lengths up to 49ft. IP67 connections. Premium Nichia LEDs. Single bin for accurate color rendering, minimal color shift and exceptional color consistency, with a CRI of 95. Full dimmable.

## FEATURES

- Wet Location; UL Listed, 1598
- Vertical Bending
- End to end continuous illumination
- Up to 49.2ft(15m) continuous runs
- Cuttable every 3.25"(82.6mm)
- Static RGB and RGBW options
- RGBW's White LED is available in 2700K, 3000K and 4000K
- 2"(50mm) minimum bending diameter; 1"(25mm) minimum bending radius
- 5 year limited warranty; 60,000 hrs white, 100,000 hrs color LED lifetime
- Dimmable with Pulse Width Modulation & DMX
- UV/IR protected Silicone Injection Mold
- Ambient working temperature -40°F~131°F (-40°C~55°C)

## PART NUMBER & SPECIFICATIONS

### Aqueon® Flat RGB/RGBW

Part #	Color	CRI	lm/ft	lm/m	Max Run	W/ft	W/m
051629	RGB	>95	67	220	49.2ft 15m	1.83	6
051630	RGBW-27K	>95	67	220	49.2ft 15m	2.29	7.5
051631	RGBW-30K	>95	67	220	49.2ft 15m	2.29	7.5
051632	RGBW-40K	>95	67	220	49.2ft 15m	2.29	7.5

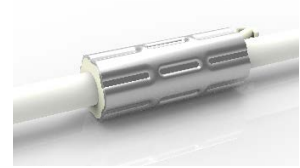
ORGANIC LIGHTING®

Project

Date

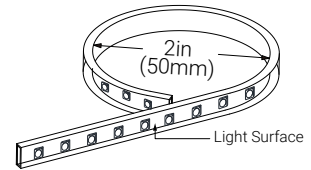
## ANTI-WICKING

All connections include a ferrule on the power feed to prevent water wicking through the connection point.

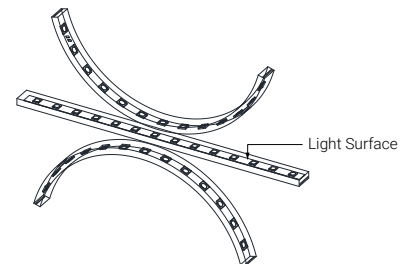


## VERTICAL BENDING

Minimum bend diameter  
2in (50mm).



The light can only be bent along the light surface.



Do not bend smaller than allowed minimum bend diameter.

Specifications may be modified or improved without notification

Organic Lighting | 12203 Magnolia Avenue, Suite 1, Riverside CA 92503 | 626.969.6140 | www.organiclighting.com | 08/2024 V2



# Aqueon® Flat RGB/RGBW

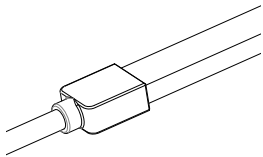
## CONNECTORS & ACCESSORIES

Aqueon IP67 accessories include end caps, extension cords and connectors with customizable cord lengths. Snap accessories are field installable.

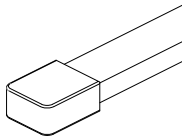
Project

Date

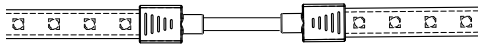
### FACTORY ASSEMBLED IP68 CONNECTORS



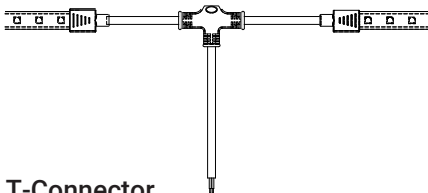
**End Connector, 16'L (4.9m)**  
#051656-CU16



**End Cap**  
#051686

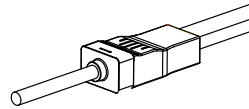


**Extension**  
#051659

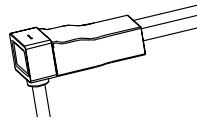


**T-Connector**  
#051658

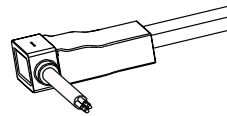
### FIELD ASSEMBLY SNAP ON IP67 CONNECTORS



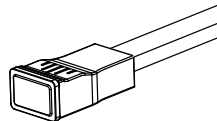
**End Snap Connector, 16'L (4.9m)**  
#051666S-CU16



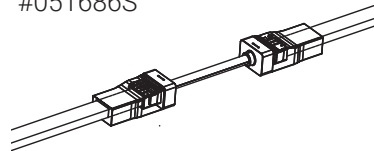
**Bottom Snap Connector, 16'L (4.9m)**  
#051605S-CU16



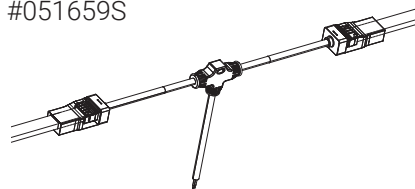
**Side Snap Connector, 16'L (4.9m)**  
#051606S-CU16



**Snap End Cap**  
#051686S



**Snap Extension**  
#051659S



**Snap T-Connector**  
#051658S

# Aqueon® Flat RGB/RGBW

## POWER SUPPLIES, MOUNTINGS & EXTRUSIONS

### POWER SUPPLIES - 24V

Forward Phase, Reverse Phase, & 0-10V Dimming Drivers. Remote enclosures available.

Part #	Ingress	Voltage	Wattage	Dimensions (inches / mm)	Description
045001	IP67	100-305V	20W	7.6 x 1.18 x 0.79 / 193 x 30 x 20	Dimmable LED Driver
045002	IP67	100-305V	40W	5.83 x 1.57 x 0.87 / 148 x 40 x 22	Dimmable LED Driver
045003	IP67	120-277V	60W	6.3 x 2.24 x 1.5 / 160 x 57 x 38	Dimmable LED Driver
045004	IP67	120-277V	75W	6.3 x 2.24 x 1.5 / 160 x 57 x 38	Dimmable LED Driver
045005	IP67	120-277V	96W	7.6 x 2.24 x 1.5 / 193 x 57 x 38	Dimmable LED Driver
045006	IP67	120-277V	200W	10.1 x 3.03 x 1.8 / 257 x 77 x 46	Dimmable LED Driver
045007	IP67	120-277V	300W	11.9 x 3.03 x 1.8 / 302 x 77 x 46	Dimmable LED Driver

### ENCLOSURES

Part #	Ingress	Dimensions (inches / mm)	Description
045008	IP67	9.4 x 2.6 x 1.9 / 239 x 66 x 48	20W Enclosure
045009	IP67	11.02 x 4.05 x 2.2 / 280 x 103 x 56	40W Enclosure
045010	IP67	11.02 x 4.05 x 2.2 / 280 x 103 x 56	60W Enclosure
045011	IP67	11.02 x 4.05 x 2.2 / 280 x 103 x 56	75W Enclosure
045012	IP67	11.02 x 4.05 x 2.2 / 280 x 103 x 56	96W Enclosure
045013	IP67	16.7 x 9.8 x 2.3 / 424 x 249 x 58	200W Enclosure
045014	IP67	16.7 x 9.8 x 2.3 / 424 x 249 x 58	300W Enclosure

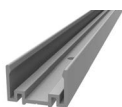
### DMX CONTROLLER

Part #	Description
011343	100W Digital Controller
011344	180W Digital Controller
011345	720W Digital Controller
011341	Digital Controller & Power Supply Combination
011420	Nicolaude DE3 DMX 512 Controller
011403	Nicolaude DINA-DR1 DMX 512 Controller
050203	LT-200 SPI Controller - For Pixel
050205	DMX512 SPI Converter Decoder - For Pixel

### MOUNTINGS & EXTRUSIONS

Mounting Channels to Match any Installation

#### Aluminum Channel



- High Quality Aluminum
- Lightweight
- Cost Effective

39.37in(1000mm) L - #051694

#### Clear Lensed Channel, 1/2" H



- Light-weight
- Easy to Install & Dismantle
- 1/2" High, 3/4" available
- Clear lens, frosted lens available.

39.37in(1000mm) L - #051695

#### Clear Lensed Channel, 3/4" H



- Light-weight
- Easy to Install & Dismantle
- 1/2" High, 3/4" available
- Clear lens, frosted lens available.

39.37in(1000mm) L - #51696

#### Frosted Lensed Channel, 1/2" H



- Light-weight
- Easy to Install & Dismantle
- 1/2" High, 3/4" available
- Clear lens, frosted lens available
- available

39.37in(1000mm) L - #051697

#### Frosted Lensed Channel, 3/4" H



- Light-weight
- Easy to Install & Dismantle
- 1/2" High, 3/4" available
- Clear lens, frosted lens available

39.37in(1000mm) L - #51698

#### PVC Mounting Channel



- Light-weight
- Self adhesive

48in(1219mm) L - #037006



Project

Date

#### 20W-60W Dimmable Driver



#### 75W-300W Dimmable Driver



#### DMX512 SPI Converter Decoder



#### LT-200 SPI Controller



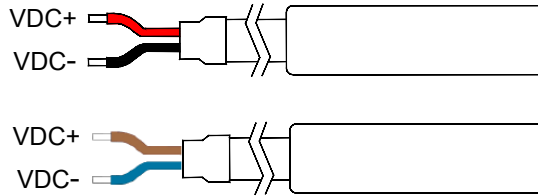
Specifications may be modified or improved without notification

# Aqueon® Flat RGB/RGBW

## CABLE REQUIREMENT

The Aqueon® LED strips need a minimum voltage at the beginning of the LED strip to function according to the specifications. The table below gives an indication of the maximum cable length based on the cable thickness. The standard starter cable (20 AWG) has a cable length of 16ft(4.88m).

In case the required length is longer than the length mentioned in this cable, it is recommended to cut the starter cable down to 1ft and splice a larger gauge cable. Please contact your distributor for a detailed cable calculation.



Cable X Information	LED Strip	Max. Cable Length
20 AWG x 2	3.28 ft/1m	303 ft/92.35m
	16.4 ft/5m	57 ft/17.37m
	32.8 ft/10m	36 ft/11m
18 AWG x 2	3.28 ft/1m	457 ft/139.3m
	16.4 ft/5m	86 ft/26.21m
	32.8 ft/10m	56 ft/17.07m
16 AWG x 2	3.28 ft/1m	914 ft/278.59m
	16.4 ft/5m	172 ft/52.43m
	32.8 ft/10m	90 ft/27.43m
14 AWG x 2	3.28 ft/1m	1521 ft/463.60
	16.4 ft/5m	287 ft/87.48m
	32.8 ft/10m	140 ft/42.67m