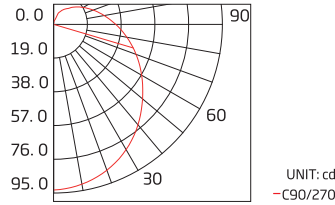


Aqueon® Neon RGB/RGBW - Pixel

24V DC 

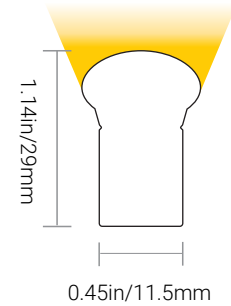


Beam Angle 151°

ORGANIC LIGHTING®

Project

Date

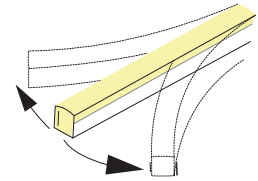


Aqueon NEON RGB + RGBW Pixel is a horizontal bending flexible neon LED Strip. Made from structurally superior Silicone encapsulation; Aqueon NEON RGB + RGBW Pixel offers resistance to UV exposure, chemical, and the most challenging exterior environments. Using premium NICHIA LEDs, with SDCM3 binning for accurate color rendering and exceptional lifetime consistency.

FEATURES

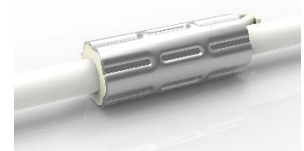
- End to end Continuous Illumination
- Constant Voltage DC 24V
- Horizontal Bending Only - Min Bending Diameter 4.72 in (120mm)
- Flood and Vibration Proof
- Cuttable every 6.56in (166.7mm)
- Dynamic RGB & RGBW Options
- Max Run Length- **RGB:** 49.2ft (15m) / **RGBW:** 39.4ft(12m)
- Available in RGB, RGBW-27K, RGBW-30K, RGBW-40K
- Ambient Working Temperature: -40~113°F / -40~45°C
- Storage Temperature: -40~140°F / -40~60°C
- 5 Year Limited Warranty - 50,000 hrs white, 100,000 hrs color
- IP68 Waterproof Connectors
- IK10 Rated / CE-EMC

HORIZONTAL BENDING



ANTI-WICKING

All connections include a ferrule on the power feed to prevent water wicking through the connection point.



PART NUMBER & SPECIFICATIONS

Aqueon Neon® RGB & RGBW - Pixel

Part #	Color	W/ft	W/m	CRI	lm/ft	lm/m	lm/W
054130	RGB	3.66	12	>80	52	170	14.2
054131	RGBW-27K	4.57	15	>80	6-34	20-110	1.3-7.4
054132	RGBW-30K	4.57	15	>80	6-34	20-110	1.3-7.4
054133	RGBW-40K	4.57	15	>80	6-34	20-110	1.3-7.4

Specifications may be modified or improved without notification

Organic Lighting | 12203 Magnolia Avenue, Suite 1, Riverside CA 92503 | 626.969.6140 | www.organiclighting.com | 02/2024 V6



Aqueon® Neon RGB/RGBW - Pixel

CONNECTORS

FACTORY ASSEMBLED IP68 CONNECTORS

Silicone Injection - moulded connectors

RGB (20AWG*1+22AWG*3) / RGBW (20AWG*1+22AWG*4)



Project

Date



**End Feed
IP68 Connector**

#054040-CUXX
XX - Specify length in FT



**Left Feed
IP68 Connector**

#054041-CUXX
XX - Specify length in FT



**Right Feed
IP68 Connector**

#054042-CUXX
XX - Specify length in FT



**Bottom Feed
IP68 Connector**

#054043-CUXX
XX - Specify length in FT



**T-Connector
IP68 Connector**

#054044-CUXX
XX - Specify length in FT



**Jumper
IP68 Connector**

#054045-CUXX
XX - Specify length in FT



**End Cap
IP68 Connector**

#054046

FIELD ASSEMBLY IP67 CONNECTORS

Snap Connectors

RGB (18AWG*4) / RGBW (18AWG*5)



**End Feed
IP67 Connector**

#054050-CUXX
XX - Specify length in FT



**Left Feed
IP67 Connector**

#054051-CUXX
XX - Specify length in FT



**Right Feed
IP67 Connector**

#054052-CUXX
XX - Specify length in FT



**Bottom Feed
IP67 Connector**

#054053-CUXX
XX - Specify length in FT



**T-Connector
IP67 Connector**

#054054-CUXX
XX - Specify length in FT



**Jumper
IP67 Connector**

#054055-CUXX
XX - Specify length in FT



**End Cap
IP67 Connector**

#054056

Specifications may be modified or improved without notification



Aqueon® Neon RGB/RGBW - Pixel

POWER SUPPLIES, MOUNTINGS & EXTRUSIONS



Project

Date

POWER SUPPLIES - 24V

Forward Phase, Reverse Phase, & 0-10V Dimming Drivers. Remote enclosures available.

Part #	Ingress	Voltage	Wattage	Dimensions (inches / mm)	Description
045001	IP67	100-305V	20W	7.6 x 1.18 x 0.79 / 193 x 30 x 20	Dimmable LED Driver
045002	IP67	100-305V	40W	5.83 x 1.57 x 0.87 / 148 x 40 x 22	Dimmable LED Driver
045003	IP67	120-277V	60W	6.3 x 2.24 x 1.5 / 160 x 57 x 38	Dimmable LED Driver
045004	IP67	120-277V	75W	6.3 x 2.24 x 1.5 / 160 x 57 x 38	Dimmable LED Driver
045005	IP67	120-277V	96W	7.6 x 2.24 x 1.5 / 193 x 57 x 38	Dimmable LED Driver
045006	IP67	120-277V	200W	10.1 x 3.03 x 1.8 / 257 x 77 x 46	Dimmable LED Driver
045007	IP67	120-277V	300W	11.9 x 3.03 x 1.8 / 302 x 77 x 46	Dimmable LED Driver

20W - 60W Dimmable Driver



ENCLOSURES

Part #	Ingress	Dimensions (inches / mm)	Description
045008	IP67	9.4 x 2.6 x 1.9 / 239 x 66 x 48	20W Enclosure
045009	IP67	11.02 x 4.05 x 2.2 / 280 x 103 x 56	40W Enclosure
045010	IP67	11.02 x 4.05 x 2.2 / 280 x 103 x 56	60W Enclosure
045011	IP67	11.02 x 4.05 x 2.2 / 280 x 103 x 56	75W Enclosure
045012	IP67	11.02 x 4.05 x 2.2 / 280 x 103 x 56	96W Enclosure
045013	IP67	16.7 x 9.8 x 2.3 / 424 x 249 x 58	200W Enclosure
045014	IP67	16.7 x 9.8 x 2.3 / 424 x 249 x 58	300W Enclosure

Nicolaude DE3 DMX 512 Controller



DMX CONTROLLER

Part #	Description
011343	100W Digital Controller
011344	180W Digital Controller
011345	720W Digital Controller
011341	Digital Controller & Power Supply Combination
011420	Nicolaude DE3 DMX 512 Controller
011403	Nicolaude DINA-DR1 DMX 512 Controller
050203*	LT-200 SPI Controller - For Pixel
050205*	DMX512 SPI Converter Decoder - For Pixel

* 050203 & 050205 Required for all Pixel Strips

DMX512 SPI Converter Decoder



LT-200 SPI Controller



MOUNTINGS & EXTRUSIONS

PET and Aluminum Mounting Channels to Match any Installation

Aluminum Channel



- High Quality Aluminum
- Lightweight
- Cost Effective
- Available with a Flange for Recessed Installation

3.25ft (1m) L - #054060

Flanged Aluminum Channel



- High Quality Aluminum
- Lightweight
- Cost Effective
- Flange for Recessed Installation

3.25ft (1m) L - #054061

Flanged Serrated Aluminum Channel



- Lightweight
- Easy to Install & Dismantle
- Continuous & Strong
- Gripping Flange for Recessed Installation

3.25ft (1m) L - #054063

Serrated Aluminum Channel



- Continuous & Strong Gripping
- Lightweight
- Easy to Install & Dismantle
- For Suspended Installations
- Available with a Flange for Recessed Installation

3.25ft (1m) L - #054062

Bendable Serrated Aluminum Channel



- High Quality Aluminum
- Easy to Install & Dismantle
- Continuous & Strong Gripping
- Memory Retaining
- Perfect for Curved Installations

3.25ft (1m) L - #054064

Specifications may be modified or improved without notification



Aqueon® Neon RGB/RGBW - Pixel

WIRING DIAGRAMS

SINGLE-END FEED

