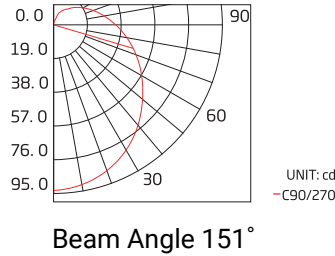


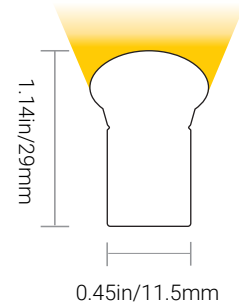
# Aqueon® Neon Monochrome - Pixel

24V DC 22 27 30 35 40 57



Project

Date

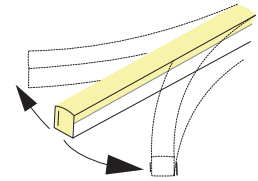


Aqueon NEON Monochrome Pixel is a horizontal bending flexible neon LED Strip. Made from structurally superior Silicone encapsulation; Aqueon NEON offers resistance to UV exposure, chemical, and the most challenging exterior environments. Premium NICHIA LEDs with SDCM3 binning for accurate color rendering and exceptional lifetime consistency. Use SPI Pixel signal to create dazzling Mono color chasing effects, similar to retro neon signage.

## FEATURES

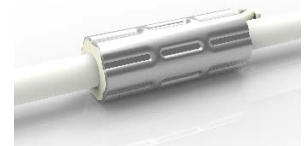
- End to end Continuous Illumination
- Constant Voltage DC 24V
- Horizontal Bending Only - Min Bending Diameter 4.72 in (120mm)
- Flood and Vibration Proof
- Cuttable every: 6.56in(166.7mm)
- Max Run Length- 49.2ft (15m)
- Available in Mono 22K, 27K, 30K, 35K, 40K, 57K, Red, Green, Blue, Amber
- Ambient Working Temperature: -40~131°F / -40~55°C
- Storage Temperature: -40~140°F / -40~60°C
- 5 Year Limited Warranty - 50,000 hrs white
- IP68 Waterproof Connectors
- IK10 Rated / CE-EMC

## HORIZONTAL BENDING



## ANTI-WICKING

All connections include a ferrule on the power feed to prevent water wicking through the connection point.



## PART NUMBER & SPECIFICATIONS

### Aqueon Neon® Monochrome - Pixel

Part #	Color	W/ft	W/m	CRI	lm/ft	lm/m	lm/W
054120	2200K	4.57	15	>80	95	310	20.78
054121	2700K	4.57	15	>80	116	380	25.38
054122	3000K	4.57	15	>80	116	380	25.38
054123	3500K	4.57	15	>80	116	380	25.38
054124	4000K	4.57	15	>80	116	380	25.38
054125	5700K	4.57	15	>80	116	380	25.38

Specifications may be modified or improved without notification



# Aqueon® Neon Monochrome - Pixel

## CONNECTORS

### FACTORY ASSEMBLED IP68 CONNECTORS

Silicone Injection - moulded connectors

RGB (20AWG\*1+22AWG\*3) / RGBW (20AWG\*1+22AWG\*4)



Project

Date



**End Feed  
IP68 Connector**

#054040-CUXX  
XX - Specify length in FT



**Left Feed  
IP68 Connector**

#054041-CUXX  
XX - Specify length in FT



**Right Feed  
IP68 Connector**

#054042-CUXX  
XX - Specify length in FT



**Bottom Feed  
IP68 Connector**

#054043-CUXX  
XX - Specify length in FT



**T-Connector  
IP68 Connector**

#054044-CUXX  
XX - Specify length in FT



**Jumper  
IP68 Connector**

#054045-CUXX  
XX - Specify length in FT



**End Cap  
IP68 Connector**

#054046

### FIELD ASSEMBLY IP67 CONNECTORS

Snap Connectors

RGB (18AWG\*4) / RGBW (18AWG\*5)



**End Feed  
IP67 Connector**

#054050-CUXX  
XX - Specify length in FT



**Left Feed  
IP67 Connector**

#054051-CUXX  
XX - Specify length in FT



**Right Feed  
IP67 Connector**

#054052-CUXX  
XX - Specify length in FT



**Bottom Feed  
IP67 Connector**

#054053-CUXX  
XX - Specify length in FT



**T-Connector  
IP67 Connector**

#054054-CUXX  
XX - Specify length in FT



**Jumper  
IP67 Connector**

#054055-CUXX  
XX - Specify length in FT



**End Cap  
IP67 Connector**

#054056

Specifications may be modified or improved without notification



# Aqueon® Neon Monochrome - Pixel

## POWER SUPPLIES, MOUNTINGS & EXTRUSIONS



Project

Date

### POWER SUPPLIES - 24V

Forward Phase, Reverse Phase, & 0-10V Dimming Drivers. Remote enclosures available.

Part #	Ingress	Voltage	Wattage	Dimensions (inches / mm)	Description
045001	IP67	100-305V	20W	7.6 x 1.18 x 0.79 / 193 x 30 x 20	Dimmable LED Driver
045002	IP67	100-305V	40W	5.83 x 1.57 x 0.87 / 148 x 40 x 22	Dimmable LED Driver
045003	IP67	120-277V	60W	6.3 x 2.24 x 1.5 / 160 x 57 x 38	Dimmable LED Driver
045004	IP67	120-277V	75W	6.3 x 2.24 x 1.5 / 160 x 57 x 38	Dimmable LED Driver
045005	IP67	120-277V	96W	7.6 x 2.24 x 1.5 / 193 x 57 x 38	Dimmable LED Driver
045006	IP67	120-277V	200W	10.1 x 3.03 x 1.8 / 257 x 77 x 46	Dimmable LED Driver
045007	IP67	120-277V	300W	11.9 x 3.03 x 1.8 / 302 x 77 x 46	Dimmable LED Driver

20W - 60W Dimmable Driver



75W - 300W Dimmable Driver



### ENCLOSURES

Part #	Ingress	Dimensions (inches / mm)	Description
045008	IP67	9.4 x 2.6 x 1.9 / 239 x 66 x 48	20W Enclosure
045009	IP67	11.02 x 4.05 x 2.2 / 280 x 103 x 56	40W Enclosure
045010	IP67	11.02 x 4.05 x 2.2 / 280 x 103 x 56	60W Enclosure
045011	IP67	11.02 x 4.05 x 2.2 / 280 x 103 x 56	75W Enclosure
045012	IP67	11.02 x 4.05 x 2.2 / 280 x 103 x 56	96W Enclosure
045013	IP67	16.7 x 9.8 x 2.3 / 424 x 249 x 58	200W Enclosure
045014	IP67	16.7 x 9.8 x 2.3 / 424 x 249 x 58	300W Enclosure

Digital Controller (100W, 180W, 720W)



### DMX CONTROLLER

Part #	Description
011343	100W Digital Controller
011344	180W Digital Controller
011345	720W Digital Controller
011341	Digital Controller & Power Supply Combination
011420	Nicolaude DE3 DMX 512 Controller
011403	Nicolaude DINA-DR1 DMX 512 Controller
050203	LT-200 SPI Controller - For Pixel
050205	DMX512 SPI Converter Decoder - For Pixel

Nicolaude DE3 DMX 512 Controller



### MOUNTINGS & EXTRUSIONS

PET and Aluminum Mounting Channels to Match any Installation

#### Aluminum Channel



- High Quality Aluminum
- Lightweight
- Cost Effective
- Available with a Flange for Recessed Installation

3.25ft (1m) L - #054060

#### Flanged Aluminum Channel



- High Quality Aluminum
- Lightweight
- Cost Effective
- Flange for Recessed Installation

3.25ft (1m) L - #054061

#### Flanged Serrated Aluminum Channel



- Lightweight
- Easy to Install & Dismantle
- Continuous & Strong
- Gripping
- Flange for Recessed Installation

3.25ft (1m) L - #054063

#### Serrated Aluminum Channel



- Continuous & Strong Gripping
- Lightweight
- Easy to Install & Dismantle
- For Suspended Installations
- Available with a Flange for Recessed Installation

3.25ft (1m) L - #054062

#### Bendable Serrated Aluminum Channel



- High Quality Aluminum
- Easy to Install & Dismantle
- Continuous & Strong Gripping
- Memory Retaining
- Perfect for Curved Installations

3.25ft (1m) L - #054064

Specifications may be modified or improved without notification



# Aqueon® Neon Monochrome - Pixel

## WIRING DIAGRAMS



### SINGLE-END FEED

