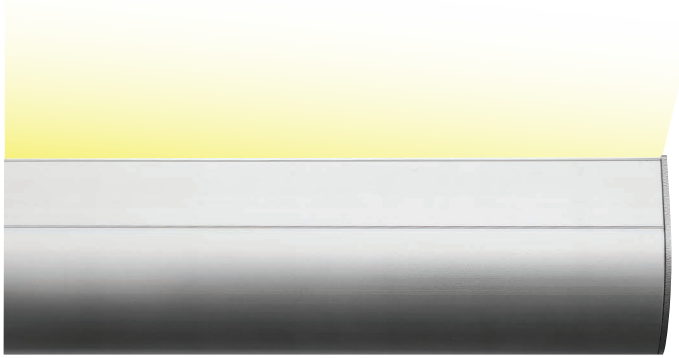


OrgaLED® Cove System



Project

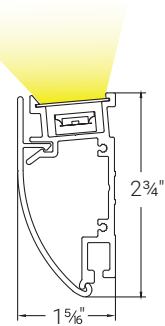
Date

APPLICATIONS

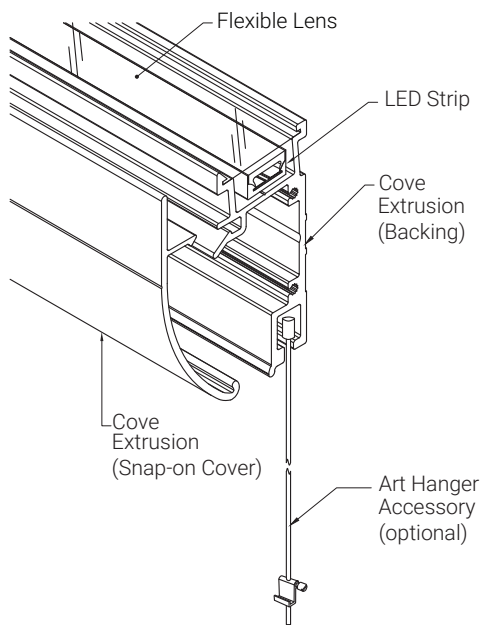
Cove System - UpLight



Uplight - Profile View



SYSTEM OVERVIEW

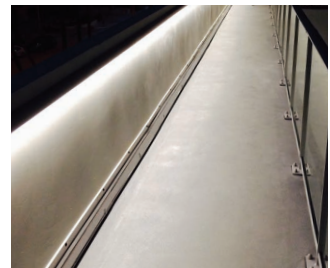


- Aluminum 6061 Extrusion, Anodized
- Snap-on Cover for a Seamless Design
- Available in 8'3" Standard Lengths
- IK10 Rated
- Polycarbonate Snap-in Lens
- Optional Art Hanger Accessory
- Custom Powder Coat Finish Available
- Simple Slide-Fed Installation

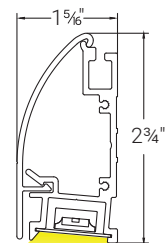
PART NUMBER & SPECIFICATIONS

Part #	Description
011580-C	Cove Extrusion Cover
011580-B	Cove Extrusion Backing
011591-C	Snap-in Cove Clear Lens
011580-ECLS	Cove Left End Cap
011580-ECRS	Cove Right End Cap
011580-CB	Cove Art Hanging Accessory

Cove System - DownLight



Downlight - Profile View

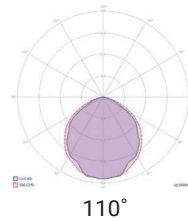


Specifications may be modified or improved without notification.



OrgaLED® Cove Extrusion

LED STRIPS - 24V | CONNECTORS



FEATURES

- Very Flexible (Bend radius >1.2")
- High Efficacy- 127 lm/W
- High Density- 8 LEDs per cuttable section
- 24V DC - Low Voltage, Class 2
- Up to 66ft Continuous Runs
- 2700K, 3000K, 3500K, 4000K, 5000K
- Field Cuttable 1.96in
- Dimmable
- UV/IR protected PVC encapsulation
- IP40 or IP67 Wet Location
- UL Listed / CE /ROHS
- 5 years / 50,000 hrs warranty

PART NUMBER & SPECIFICATIONS

OrgaLED® Power Top

Part #	Color	CRI	lm/ft*	W/ft
041201	2700K	>94	116.84	1
041202	3000K	>94	120.14	1
041203	3500K	>94	120.14	1
041204	4000K	>94	127	1
041205	5000K	>94	127	1

OrgaLED® High Power Top

Part #	Color	CRI	lm/ft*	W/ft
041301	2700K	>94	198.63	1.7
041302	3000K	>94	204.24	1.7
041303	3500K	>94	204.24	1.7
041304	4000K	>94	215.9	1.7
041305	5000K	>94	215.9	1.7

ORGANIC LIGHTING®

ACCESSORIES

OrgaLED strips offer a range of 'Plug & Play' IP40 and IP67 field installable connectors or factory installed IP67 connections.



Straight Connector Cable 16ft
IP40 / IP67
#041002



L-Connector Cable 16ft
IP40 / IP67
#041003



Jumper Cable 8in
IP40 / IP67
#041004



Top End Cap | IP40 / IP67
#041001



L-Splice Connector
IP40 / IP67
#041005



Inline Connector
IP40 / IP67
#041006



IP67 Waterproofing Kit
#011511

Specifications may be modified or improved without notification.

OrgaLED® Cove Extrusion



POWER SUPPLIES - 24V

Forward Phase, Reverse Phase, & 0-10V Dimming Drivers. Remote enclosures available.

Part #	Ingress	Voltage	Wattage	Dimensions (inches)	Description
045001	IP67	100-305V	20W	7.6 x 1.18 x 0.79	Dimmable LED Driver
045002	IP67	100-305V	40W	5.83 x 1.57 x 0.87	Dimmable LED Driver
045003	IP67	120-277V	60W	6.3 x 2.24 x 1.5	Dimmable LED Driver
045004	IP67	120-277V	75W	6.3 x 2.24 x 1.5	Dimmable LED Driver
045005	IP67	120-277V	96W	7.6 x 2.24 x 1.5	Dimmable LED Driver
045006	IP67	120-277V	200W	10.1 x 3.03 x 1.8	Dimmable LED Driver
045007	IP67	120-277V	300W	11.9 x 3.03 x 1.8	Dimmable LED Driver



20W Dimmable Driver



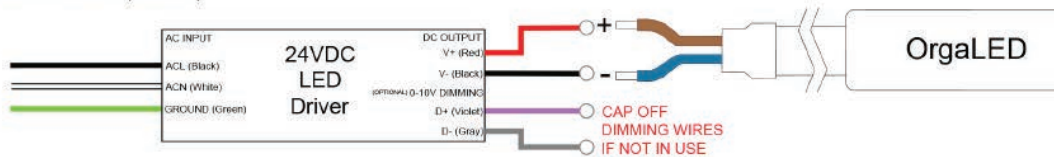
75W Dimmable Driver

ENCLOSURES

Part #	Ingress	Dimensions (inches)	Description
045008	IP67	9.4 x 2.6 x 1.9	20W Enclosure
045009	IP67	11.02 x 4.05 x 2.2	40W Enclosure
045010	IP67	11.02 x 4.05 x 2.2	60W Enclosure
045011	IP67	11.02 x 4.05 x 2.2	75W Enclosure
045012	IP67	11.02 x 4.05 x 2.2	96W Enclosure
045013	IP67	16.7 x 9.8 x 2.3	200W Enclosure
045014	IP67	16.7 x 9.8 x 2.3	300W Enclosure

ELECTRICAL DETAILS

*Regular Connection (Mono)

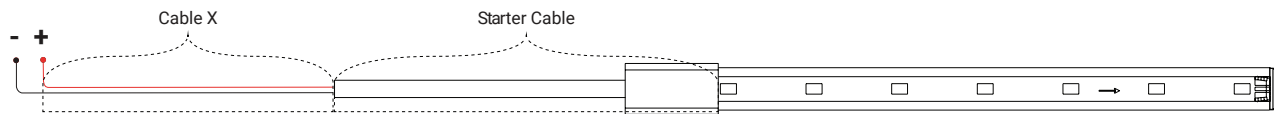


Specifications may be modified or improved without notification.

CABLE REQUIREMENT

The OrgaLED® LED strips need a minimum voltage at the beginning of the LED strip to function according to the specifications. The table below gives an indication of the maximum cable length based on the cable thickness. The standard OrgaLED® starter cable (20 AWG) has a cable length of 16ft.

In case the required length is longer than the length mentioned in this cable, it is recommended to cut the starter cable down to 1ft and splice a larger gauge cable. Please contact your distributor for a detailed cable calculation.



Cable X Information	LED Strip	Max. Cable Length
		24 V
20 AWG x 2	3.28 ft	303 ft
	16.4 ft	57 ft
	32.8 ft	36 ft
	49.2 ft	20 ft
	65.6 ft	16 ft
18 AWG x 2	3.28 ft	457 ft
	16.4 ft	86 ft
	32.8 ft	56 ft
	49.2 ft	35 ft
	65.6 ft	25 ft
16 AWG x 2	3.28 ft	914 ft
	16.4 ft	172 ft
	32.8 ft	90 ft
	49.2 ft	60 ft
	65.6 ft	40 ft
14 AWG x 2	3.28 ft	1521 ft
	16.4 ft	287 ft
	32.8 ft	140 ft
	49.2 ft	96 ft
	65.6 ft	70 ft

Specifications may be modified or improved without notification.