

OrgaLED® Marker Lights

Project

Date

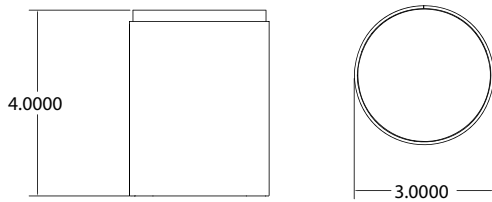


FEATURES

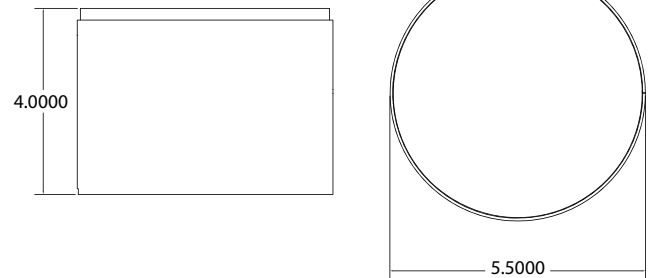
- 316 Outdoor Rated Stainless Steel Housing
- Drive-over Application - 3,000lbs
- Recessed Mounting
- Powered by OrgaLED's High Efficiency LEDs.
- 24V DC - Low Voltage, Class 2
- Remote Universal Driver (120-277V)
- 2700K, 3000K, 3500K, 4000K, 5000K, RGB, RGBW
- Dimmable
- Wet Location & Direct Buriable with waterproof connectors
- 50,000 hrs Lifetime

AVAILABLE SIZES

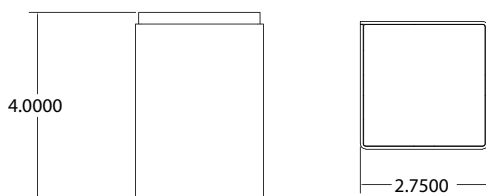
Marker Lights: 3" Circle



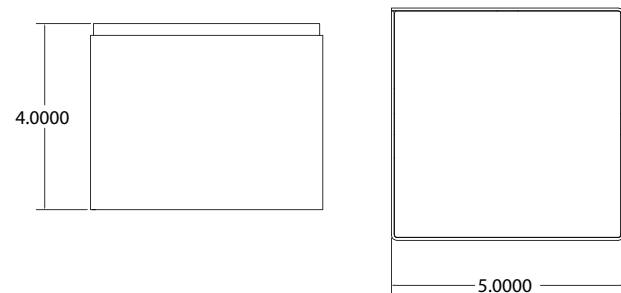
Marker Lights: 5.5" Circle



Marker Lights: 2.75" Square



Marker Lights: 5" Square



OrgaLED® Marker Lights

PART NUMBER & SPECIFICATIONS

| Part # | Description |
|---|--|
| OrgaLED® 3" Circle Marker Light | |
| 015102 | 3" Circle Marker Light Housing |
| 015103 | 3" Circle Marker Light Inground Housing |
| 015127 | 3" Circle Marker Light - 2700K |
| 015130 | 3" Circle Marker Light - 3000K |
| 015135 | 3" Circle Marker Light - 3500K |
| 015140 | 3" Circle Marker Light - 4000K |
| 015150 | 3" Circle Marker Light - 5000K |
| 0151RGB | 3" Circle Marker Light - RGB |
| 0151RGB-P | 3" Circle Marker Light - RGB Pixel |
| 0151RGBW | 3" Circle Marker Light - RGBW |
| 0151RGBW-P | 3" Circle Marker Light - RGBW Pixel |
| OrgaLED® 5.5" Circle Marker Light | |
| 015202 | 5.5" Circle Marker Light Housing |
| 015203 | 5.5" Circle Marker Light Inground Housing |
| 015227 | 5.5" Circle Marker Light - 2700K |
| 015230 | 5.5" Circle Marker Light - 3000K |
| 015235 | 5.5" Circle Marker Light - 3500K |
| 015240 | 5.5" Circle Marker Light - 4000K |
| 015250 | 5.5" Circle Marker Light - 5000K |
| 0152RGB | 5.5" Circle Marker Light - RGB |
| 0152RGB-P | 5.5" Circle Marker Light - RGB Pixel |
| 0152RGBW | 5.5" Circle Marker Light - RGBW |
| 0152RGBW-P | 5.5" Circle Marker Light - RGBW Pixel |
| OrgaLED® 2.75" Square Marker Light | |
| 015302 | 2.75" Square Marker Light Housing |
| 015303 | 2.75" Square Marker Light Inground Housing |
| 015327 | 2.75" Square Marker Light - 2700K |
| 015330 | 2.75" Square Marker Light - 3000K |
| 015335 | 2.75" Square Marker Light - 3500K |
| 015340 | 2.75" Square Marker Light - 4000K |
| 015350 | 2.75" Square Marker Light - 5000K |
| 0153RGB | 2.75" Square Marker Light - RGB |
| 0153RGB-P | 2.75" Square Marker Light - RGB Pixel |
| 0153RGBW | 2.75" Square Marker Light - RGBW |
| 0153RGBW-P | 2.75" Square Marker Light - RGBW Pixel |
| OrgaLED® 5" Square Marker Light | |
| 015402 | 5" Square Marker Light Housing |
| 015403 | 5" Square Marker Light Inground Housing |
| 015427 | 5" Square Marker Light - 2700K |
| 015430 | 5" Square Marker Light - 3000K |
| 015435 | 5" Square Marker Light - 3500K |
| 015440 | 5" Square Marker Light - 4000K |
| 015450 | 5" Square Marker Light - 5000K |
| 0154RGB | 5" Square Marker Light - RGB |
| 0154RGB-P | 5" Square Marker Light - RGB Pixel |
| 0154RGBW | 5" Square Marker Light - RGBW |
| 0154RGBW-P | 5" Square Marker Light - RGBW Pixel |

Project

Date



Circle Marker Light Housing



3" Circle Marker Light



5.5" Circle Marker Light



2.75" Square Marker Light



5" Square Marker Light

OrgaLED® Marker Lights

ACCESSORIES

| Part # | Description |
|--------|---------------------------------------|
| 015011 | 18 gauge 2 wire cable - direct burial |
| 015012 | 16 gauge 2 wire cable - direct burial |
| 015013 | 16 gauge 4 wire cable - direct burial |
| 015015 | 16 gauge 5 wire cable - direct burial |

Project

Date

POWER SUPPLIES - 24V

Forward Phase, Reverse Phase, & 0-10V Dimming Drivers. Remote enclosures available.

| Part # | Ingress | Voltage | Wattage | Dimensions (inches) | Description |
|--------|---------|----------|---------|---------------------|---------------------|
| 045001 | IP67 | 100-305V | 20W | 7.6 x 1.18 x 0.79 | Dimmable LED Driver |
| 045002 | IP67 | 100-305V | 40W | 5.83 x 1.57 x 0.87 | Dimmable LED Driver |
| 045003 | IP67 | 120-277V | 60W | 6.3 x 2.24 x 1.5 | Dimmable LED Driver |
| 045004 | IP67 | 120-277V | 75W | 6.3 x 2.24 x 1.5 | Dimmable LED Driver |
| 045005 | IP67 | 120-277V | 96W | 7.6 x 2.24 x 1.5 | Dimmable LED Driver |
| 045006 | IP67 | 120-277V | 200W | 10.1 x 3.03 x 1.8 | Dimmable LED Driver |
| 045007 | IP67 | 120-277V | 300W | 11.9 x 3.03 x 1.8 | Dimmable LED Driver |

ENCLOSURES

| Part # | Ingress | Dimensions (inches) | Description |
|--------|---------|---------------------|----------------|
| 045008 | IP67 | 9.4 x 2.6 x 1.9 | 20W Enclosure |
| 045009 | IP67 | 11.02 x 4.05 x 2.2 | 40W Enclosure |
| 045010 | IP67 | 11.02 x 4.05 x 2.2 | 60W Enclosure |
| 045011 | IP67 | 11.02 x 4.05 x 2.2 | 75W Enclosure |
| 045012 | IP67 | 11.02 x 4.05 x 2.2 | 96W Enclosure |
| 045013 | IP67 | 16.7 x 9.8 x 2.3 | 200W Enclosure |
| 045014 | IP67 | 16.7 x 9.8 x 2.3 | 300W Enclosure |

CONTROLLERS

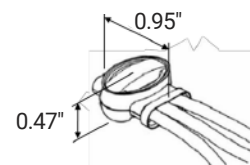
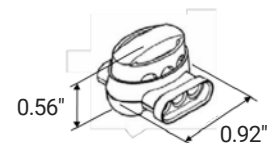
| Part # | Description |
|--------|---|
| 050205 | DMX512 SPI Converter Decoder - For Pixel |
| 050203 | LT-200 SPI Controller - For Pixel |
| 011343 | 100W Digital Controller |
| 011344 | 180W Digital Controller |
| 011345 | 720W Digital Controller |
| 011341 | Digital Controller & Power Supply Combination |
| 011420 | Nicolaude DE3 DMX 512 Controller |
| 011403 | Nicolaude DINA-DR1 DMX 512 Controller |

CONNECTION

Splice connection using Scotchlok® connectors.

Turn power off before installing or removing terminal. All electrical work should be done according to appropriate electrical codes.

1. Insert 2 or 3 unstripped wires completely into the connector and check their position by looking through the translucent connector body.
2. Hold the tool perpendicular to the wires and make the connection by driving the cap down flush with the top edge of the connector body.



Specifications may be modified or improved without notification