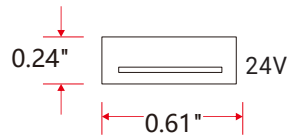


# Aqueon® Flat RGB/RGBW Pixel - 24V DC



A new standard of flexible light; superior standards new materials, new methods, military grade components and advanced circuit design to create a flood proof; vibration proof seamless light. Our constant current design ensures to maintain a full illumination in continuous lengths up to 49ft. IP67 connections. Premium Nichia LEDs. Single bin for accurate color rendering, minimal color shift and exceptional color consistency, with a CRI of 95. Full dimmable.

- Wet Location; UL Listed, 1598
- Vertical Bending
- End to end continuous illumination
- Up to 49.2ft continuous runs
- Cuttable every 4.9"
- Pixel RGB and RGBW options
- RGBW's White LED is available in 2700K, 3000K and 4000K
- 2" minimum bending diameter; 1" minimum bending radius
- 3 year limited warranty; 50,000hrs white, 100,000hrs color
- Dimmable with Pulse Width Modulation & DMX
- UV/IR protected PVC encapsulation
- Ambient working temperature -4°F - 113°F

## PART NUMBER & SPECIFICATIONS

Vertical  
Bending Model



Part #	Color	Max length	LEDs/ft	lm/ft	W/ft
051645	RGB	49.2ft	17	54.1	1.83
051647	RGBW-27K	49.2ft	17	89.2	2.43
051649	RGBW-30K	49.2ft	17	89.2	2.43
051648	RGBW-40K	49.2ft	17	89.2	2.43

Project

Type

Date

## ACCESSORIES

Factory assembled LED strips offer a variety of IP67 connectors with customizable cord lengths. See pg 2.

## MOUNTING

Various plastic, aluminum and stainless steel mounting options. See pg 3.

## POWER SUPPLIES

24V DC Power Supplies ranging from 25W-300W.



### ELV 0-10V; IP20, 120-277V

25W #011380  
40W #011381

### ELV 0-10V; IP67, 120-277V

60W #011382  
75W #011383  
100W #011384



### Magnetic 0-10V; IP67, 120V

20W #011350  
40W #011351  
50W #011352  
60W #011353  
96W #011354  
100W #011355  
150W #011356  
200W #011357  
300W #011358

### Magnetic 0-10V; IP67, 277V

60W #011359  
150W #011360

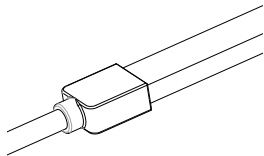


Specifications are correct at the time of publishing, but may be modified or improved in accordance with current electrical, safety or manufacturing methods without notification.

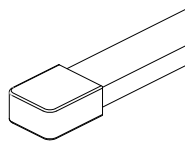
## CONNECTORS & ACCESSORIES

Aqueon Pixel RGB & RGBW IP67 accessories include end caps, extension cords and connectors with customizable cord lengths. Snap accessories are field installable.  
For specifying cord lengths add CU + cord length to the end of your part number.

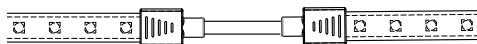
### Factory Assembled IP67 Connectors



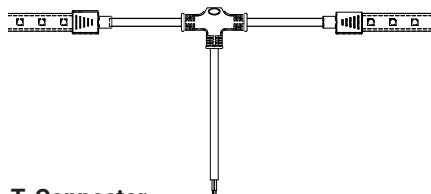
**End Connector, 16'L**  
#051656-CU16



**End Cap**  
#051686

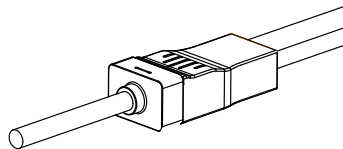


**Extension**  
#051659

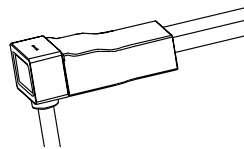


**T-Connector**  
#051658

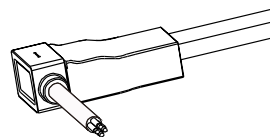
### Field Assembly Snap on IP67 Connectors



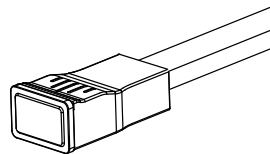
**End Snap Connector, 16'L**  
#051666S-CU16



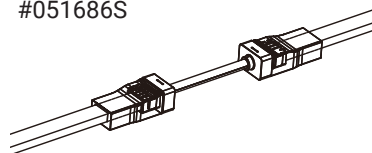
**Bottom Snap Connector, 16'L**  
#051605S-CU16



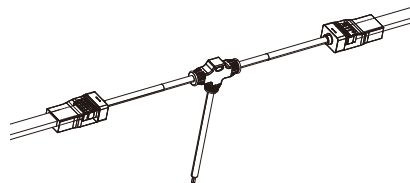
**Side Snap Connector, 16'L**  
#051606S-CU16



**Snap End Cap**  
#051686S



**Snap Extension**  
#051659S

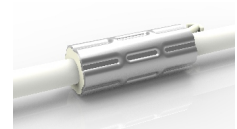


**Snap T- Connector**  
#051658S

Project
Type
Date

### ANTI-WICKING

All connections include a ferrule on the power feed to prevent water wicking through the connection point.



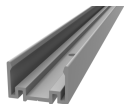
Specifications are correct at the time of publishing, but may be modified or improved in accordance with current electrical, safety or manufacturing methods without notification.

# Aqueon® Flat RGB/RGBW Pixel - 24V DC

## MOUNTING

PET and Aluminum mounting channels to match any installation.

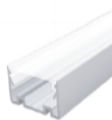
### Aluminum Channel



- High-quality Aluminum
- Light-weight
- Cost-Effective

3'3"L - #051694

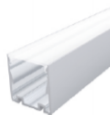
### Clear Lensed Channel, 1/2" H



- Light-weight
- Easy to Install & Dismantle
- 1/2" High, 3/4" available
- Clear lens, frosted lens available.

3'3"L - #051695

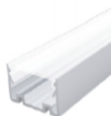
### Clear Lensed Channel, 3/4" H



- Light-weight
- Easy to Install & Dismantle
- 3/4" High, 1/2" available
- Clear lens, frosted lens available.

3'3"L - #051696

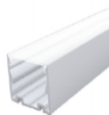
### Frosted Lensed Channel, 1/2" H



- Light-weight
- Easy to Install & Dismantle
- 1/2" High, 3/4" available
- Frosted lens, clear lens available.

3'3"L - #051697

### Frosted Lensed Channel, 3/4" H



- Light-weight
- Easy to Install & Dismantle
- 1/2" High, 3/4" available
- Clear lens, frosted lens available.

3'3"L - #051698

ORGANIC LIGHTING®

Project

Type

Date



Specifications are correct at the time of publishing, but may be modified or improved in accordance with current electrical, safety or manufacturing methods without notification.