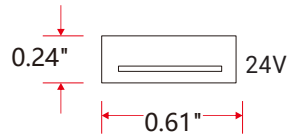


Aqueon® Flat Mono

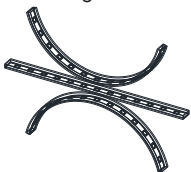


A new standard of flexible light; superior standards new materials, new methods, military grade components and advanced circuit design to create a flood proof; vibration proof seamless light. Our constant current design ensures to maintain a full illumination in continuous lengths up to 49ft. IP67 connections. Premium Nichia LEDs. Single bin for accurate color rendering, minimal color shift and exceptional color consistency, with a CRI of 95. Full dimmable.

- Wet Location; UL Listed, 1598
- Vertical Bending
- End to end continuous illumination
- Up to 49.2ft continuous runs
- Cuttable every 3.25" (White, Green, Blue) & 4.9" (Red, Amber)
- 2200K, 2700K, 3000K, 3500K, 4000K, 5700K, Red, Green, Blue and Wildlife Amber options available
- 2" minimum bending diameter; 1" minimum bending radius
- 3 year limited warranty; 50,000hrs white, 100,000hrs color
- Dimmable with Pulse Width Modulation & DMX
- UV/IR protected PVC encapsulation
- Ambient working temperature -4°F - 113°F

PART NUMBER & SPECIFICATIONS

Vertical
Bending Model



Part #	CCT	Max. Length	LEDs/ft	Lm/ft	W/ft
051609	2200K	49.2 ft	22	106.7	1.83
051610	2700K	49.2 ft	22	122	1.83
051611	3000K	49.2 ft	22	122	1.83
051612	3500K	49.2 ft	22	137.2	1.83
051613	4000K	49.2 ft	22	137.2	1.83
051615	5700K	49.2 ft	22	122	1.83
051614	6500K	49.2 ft	22	122	1.83
051616	Red	49.2 ft	22	33.5	1.22
051617	Green	49.2 ft	22	83.8	1.83
051618	Blue	49.2 ft	22	16.8	1.83
051619	Amber	49.2 ft	22	33.5	1.22

ORGANIC LIGHTING®

Project

Type

Date

ACCESSORIES

Factory assembled LED strips offer a variety of IP67 connectors with customizable cord lengths. See pg 2.

MOUNTING

Various plastic, aluminum and stainless steel mounting options. See pg 3.

POWER SUPPLIES

24V DC Power Supplies ranging from 25W-300W.



ELV 0-10V; IP20, 120-277V

25W #011380
40W #011381

ELV 0-10V; IP67, 120-277V

60W #011382
75W #011383
100W #011384



Magnetic 0-10V; IP67, 120V

20W #011350
40W #011351
50W #011352
60W #011353
96W #011354
100W #011355
150W #011356
200W #011357
300W #011358

Magnetic 0-10V; IP67, 277V

60W #011359
150W #011360



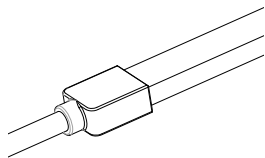
Specifications are correct at the time of publishing, but may be modified or improved in accordance with current electrical, safety or manufacturing methods without notification.

Aqueon® Flat Mono

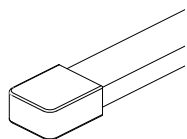
CONNECTORS & ACCESSORIES

Factory assembled 2-wired Aqueon Mono IP67 submersible accessories include end caps, extension cords and connectors with customizable cord lengths. IP67 self assembly connectors are also available.

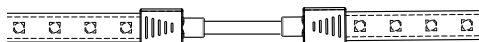
Factory Assembled IP67 Connectors



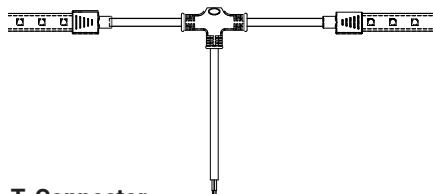
End Connector, 16'L
#051650-CU16



End Cap
#051686

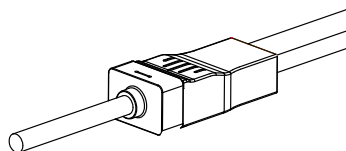


Extension
#051660

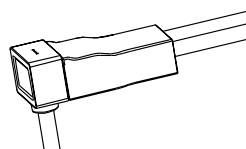


T-Connector
#051661

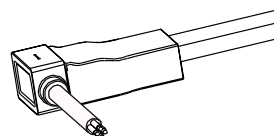
Field Assembly Snap on IP67 Connectors



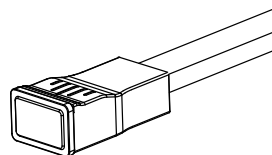
End Snap Connector, 16'L
#051650S-CU16



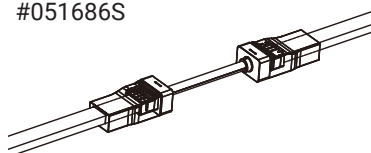
Bottom Snap Connector, 16'L
#051668S-CU16



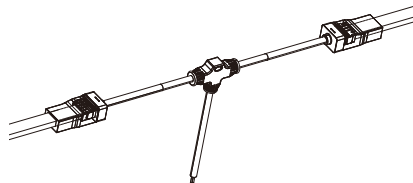
Side Snap Connector, 16'L
#051669S-CU16



Snap End Cap
#051686S



Snap Extension
#051660S



Snap T-Connector
#051661S

ORGANIC LIGHTING®

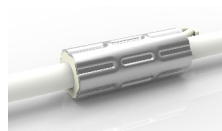
Project

Type

Date

ANTI-WICKING

All connections include a ferrule on the power feed to prevent water wicking through the connection point.



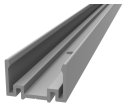
Specifications are correct at the time of publishing, but may be modified or improved in accordance with current electrical, safety or manufacturing methods without notification.

Aqueon® Flat Mono

MOUNTING

PET and Aluminum mounting channels to match any installation.

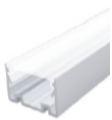
Aluminum Channel



- High-quality Aluminum
- Light-weight
- Cost-Effective

3'3"L - #051694

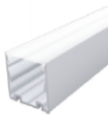
Clear Lensed Channel, 1/2" H



- Light-weight
- Easy to Install & Dismantle
- 1/2" High, 3/4" available
- Clear lens, frosted lens available.

3'3"L - #051695

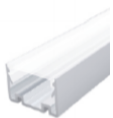
Clear Lensed Channel, 3/4" H



- Light-weight
- Easy to Install & Dismantle
- 3/4" High, 1/2" available
- Clear lens, frosted lens available.

3'3"L - #051696

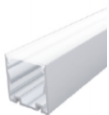
Frosted Lensed Channel, 1/2" H



- Light-weight
- Easy to Install & Dismantle
- 1/2" High, 3/4" available
- Frosted lens, clear lens available.

3'3"L - #051697

Frosted Lensed Channel, 3/4" H



- Light-weight
- Easy to Install & Dismantle
- 1/2" High, 3/4" available
- Clear lens, frosted lens available.

3'3"L - #051698

ORGANIC LIGHTING®

Project

Type

Date



Specifications are correct at the time of publishing, but may be modified or improved in accordance with current electrical, safety or manufacturing methods without notification.