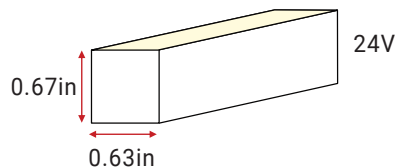


Aqueon® Diffuse Mono

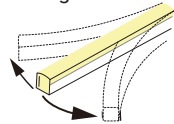


A new standard of flexible light; superior standards new materials, new methods, military grade components and advanced circuit design to create a flood proof; vibration proof seamless light. Our constant current design ensures to maintain a full illumination in continuous lengths up to 49ft. Available in both vertical and horizontal bending. IP67 or IP68 submersible. Premium Nichia LEDs. Single bin for accurate color rendering, minimal color shift and exceptional color consistency, with a CRI of 95. Full dimmable.

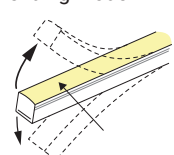
- Submersible; UL Listed, 676
- Horizontal or Vertical bending options
- End to end continuous illumination
- Up to 49.2ft continuous runs; Flood and vibration proof
- Cuttable every 2" (White, Green, Blue) & 3.25" (Red, Amber)
- 2200K, 2700K, 3000K, 3500K, 4000K, 5700K, Red, Green, Blue and Wildlife Amber options available
- Ultra low energy; 1.8W/ft
- 11.8" minimum bending diameter; 5.5" minimum bending radius
- 3 year limited warranty; 50,000hrs white, 100,000hrs color
- Dimmable with Pulse Width Modulation & DMX
- UV/IR protected PVC encapsulation
- Ambient working temperature -4°F - 113°F

PART NUMBER & SPECIFICATIONS

Horizontal Bending Model



Vertical Bending Model



Part #	CCT	Max. Length	LEDs/ft	Lm/ft	W/ft
052204	2200K	49.2 ft	32	61	1.83
052205	2700K	49.2 ft	32	61	1.83
052236	3000K	49.2 ft	32	61	1.83
052237	3500K	49.2 ft	32	68.6	1.83
052238	4000K	49.2 ft	32	68.6	1.83
052239	5700K	49.2 ft	32	61	1.83
052210	Red	49.2 ft	32	19.8	1.22
052211	Green	49.2 ft	32	45.7	1.83
052212	Blue	49.2 ft	32	7.6	1.83
052213	Amber	49.2 ft	32	19.8	1.22
052203	2200K	49.2 ft	32	64	1.83
052229	2700K	49.2 ft	32	64	1.83
052230	3000K	49.2 ft	32	64	1.83
052231	3500K	49.2 ft	32	73.2	1.83
052232	4000K	49.2 ft	32	73.2	1.83
052233	5700K	49.2 ft	32	64	1.83
052206	Red	49.2 ft	32	19.8	1.22
052207	Green	49.2 ft	32	45.7	1.83
052208	Blue	49.2 ft	32	7.6	1.83
052209	Amber	49.2 ft	32	19.8	1.22

ORGANIC LIGHTING®

Project

Type

Date

ACCESSORIES

Factory assembled LED strips offer a variety of IP68 connectors with customizable cord lengths. See pg 2.



MOUNTING

Various plastic, aluminum and stainless steel mounting options. See pg 3.

POWER SUPPLIES

24V DC Power Supplies ranging from 25W-300W.



ELV 0-10V; IP20, 120-277V

25W #011380

40W #011381

ELV 0-10V; IP67, 120-277V

60W #011382

75W #011383

100W #011384



Magnetic 0-10V; IP67, 120V

20W #011350

40W #011351

50W #011352

60W #011353

96W #011354

100W #011355

150W #011356

200W #011357

300W #011358

Magnetic 0-10V; IP67, 277V

60W #011359

150W #011360



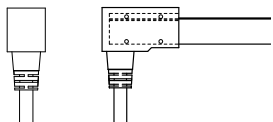
Specifications are correct at the time of publishing, but may be modified or improved in accordance with current electrical, safety or manufacturing methods without notification.

Aqueon® Diffuse Mono

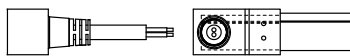
CONNECTORS & ACCESSORIES

Factory assembled 2-wired Aqueon Mono IP68 submersible accessories include end caps, extension cords and connectors with customizable cord lengths. IP67 self assembly connectors are also available.

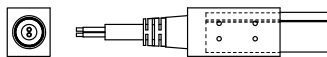
Factory Assembled IP68 Connectors



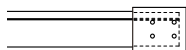
Bottom Feed Connector, 16'L
#052250-CU16



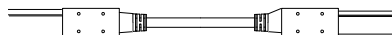
Side Feed Connector, 16'L
#052263-CU16



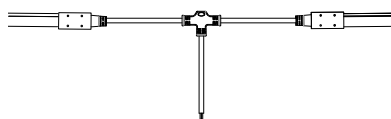
End Connector, 16'L
#052278-CU16



End Cap
#052286

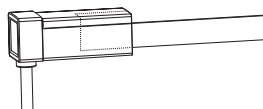


Extension
#052279

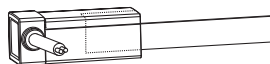


T-Connector
#052280

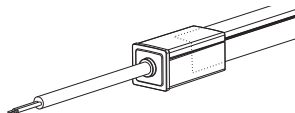
Field Assembly Snap on IP67 Connectors



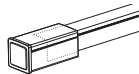
Bottom Snap Connector, 16'L
#052250S-CU16



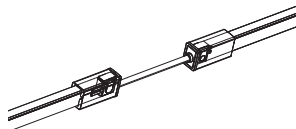
Side Feed Snap Connector, 16'L
#052263S-CU16



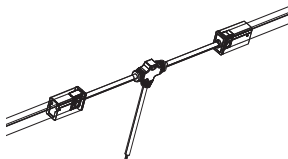
End Snap Connector, 16'L
#052278S-CU16



Snap End Cap
#052286S



Snap Extension
#052279S



Snap T-Connector
#052280S

ORGANIC LIGHTING®

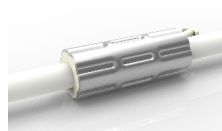
Project

Type

Date

ANTI-WICKING

All connections include a ferrule on the power feed to prevent water wicking through the connection point.



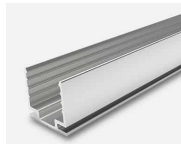
Specifications are correct at the time of publishing, but may be modified or improved in accordance with current electrical, safety or manufacturing methods without notification.

Aqueon® Diffuse Mono

MOUNTING

PET and Aluminum mounting channels to match any installation.

Aluminum Channel



- High-quality Aluminum
- Light-weight
- Cost-Effective
- Available with a Flange for Recessed Installation

3'3"L - #053000
1.38"L - #053001

Flanged Aluminum Channel



- High-quality Aluminum
- Light-weight
- Cost-Effective
- Flange for Recessed Installation

3'3"L - #053002
1.38"L - #053003

Serrated Aluminum Channel



- Light-weight
- Easy to Install & Dismantle
- Continuous & Strong Gripping
- For Suspended Installations
- Available with a Flange for Recessed Installation

3'3"L - #053008
0.8"L - #053009

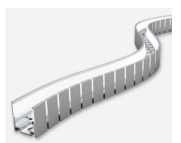
Flanged Serrated Aluminum Channel



- Light-weight
- Easy to Install & Dismantle
- Continuous & Strong Gripping
- Flange for Recessed Installation

3'3"L - #053010
0.8"L - #053011

Bendable Serrated Aluminum Channel



- High-quality Aluminum
- Easy to Install & Dismantle
- Continuous & Strong Gripping
- Memory Retaining
- Perfect for Curved Installations

3'3"L - #053012
1.7"L - #053013

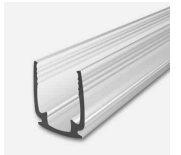
Hybrid Channel



- Flexible with a rigid base
- PET & Aluminum

3'3"L - #053006
1.38"L - #053007

PET Channel



- Corrosion proof for Submersion Resistance
- Light-weight easily cuttable

3'3"L - #053004
1.38"L - #053005

ORGANIC LIGHTING®

Project

Type

Date



Specifications are correct at the time of publishing, but may be modified or improved in accordance with current electrical, safety or manufacturing methods without notification.