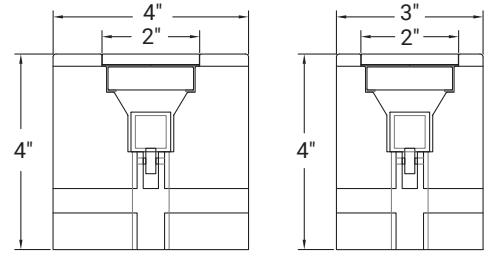




Project

Date

STANDARD SIZES _____
 *Custom Shapes & Sizes Available



CONSTRUCTION
 Interlocking reinforced Cast Polymer concrete, with drive-over tempered glass lens system with an impact resistant anti-slip surface layer. Suitable for harsh environments. Salt water and chemical resistant.

MOUNTING
 Inground installation in continuous lines, or individual fixtures. Drive-over applications up to 50,000 PSI. Future proof LED arrays up to 49ft are maintainable and replaceable from one end of the run, without removing lenses.

LED
 Aqueon® 24VDC IP68 flexible continuous LED strip with submersible IP68 molded connectors, specially designed for harsh environments.

COLOR TEMPERATURES
 24k, 30K, 35K, 40K, 50K, Red, Blue, Green, Amber, RGB, RGBW, Tunable White; DMX programmable, streaming digital pixel models.

ELECTRICAL
 Remote 24V drivers (Dimmable 0-10V). DMX controlled RGB or RGBW.

Overcoming the high cost and limitations of drive-over lines of light is now easy with FortaCast™ (patent pending) buriable polymer concrete drive-over lighting. The structural self-supporting fixtures can be installed in roadways, paths or stonework with the ease of installing pavers. Fixtures lock together to form unlimited continuous illuminated diffused straight or curved lines with IP68 submersible sealed LEDs. Encapsulated diffused LEDs are flood and typhoon proof. Walk-over models and drive-over applications supporting 50,000 psi / 100,000 hours lifetime according to color and output required.

AQUEON LED Inside

- UL Listed to 2108-submersible.
- Permanent double molded connections.
- Low Energy - 1.83W/ft | RGBW 2.74W/ft
- Circuit protects each LED individually
- Perfectly diffused illumination
- Continuous runs



Vibration proof, and capable of withstanding the harshest environments. Aqueon® is a new type of flexible light. Superior standards, new materials, new methods, military grade components and advanced circuit design. Aqueon is flexible enough to slide into the FortaCast™ from the beginning of the run where miniature rollers inside the channels guide the lighting strip to the end.

* Specifications sheets are subject to change without notification.



SPECIFYING FORTACAST DRIVE-OVER LIGHTING

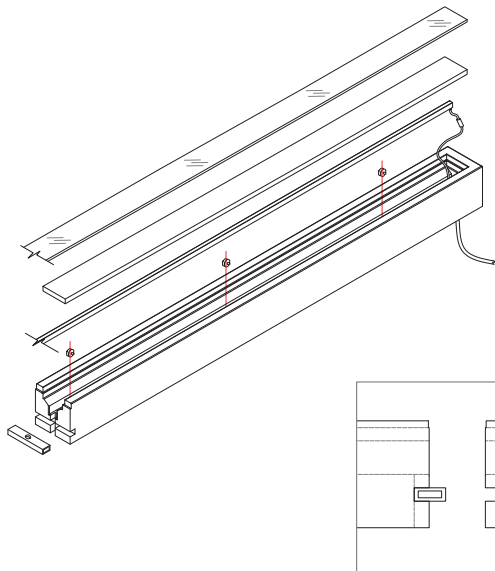
Provide fully dimensional plans, DWG files and detailed drawings.

INSTALLATION

3' FortaCast™ sections are set in place, connect and lock together. Numbered sections are delivered to site, ready for installation. After the first section is in place, a special sealing compound is brushed to the matching ends and the second and subsequent sections are connected. After all construction and lenses are in place, the Aqueon LED lighting is installed from one end of the run. Miniature rollers guide the LED strip to the end of the run.



Air and vapor barrier supplied for connected joints.



Interlocking sealing sections with inbuilt drainage. Self supporting - no secondary installation required

Buriable connecting sections.

STANDARD FINISHES (UPPER SURFACES)



Special concrete stains are available. For color options see: <https://classiccoatingsystems.com/>



SERIES	WIDTH	CCT	FINISH
PCS STRAIGHT	3X4-2 3"Wx 4"H(2"lens)	24 2400K	WH WHITE
PCC CURVED	4X4-2 4"Wx 4"H(2"lens)	27 2700K	GR GRAY
PCCR CIRCLE	CU Custom	30 3000K	CU CUSTOM
		35 3500K	
		40 4000K	
		50 5000K	
		RGB RGB	
		RGBW RGBW	
		TW TUNABLE WHITE	
		RGBP RGB-PIXEL	
		RGBWP RGBW-PIXEL	



* Specifications sheets are subject to change without notification.

FORTACAST APPLICATIONS

Different ways to apply FortaCast sections. Custom Radius available.

STAND ALONE

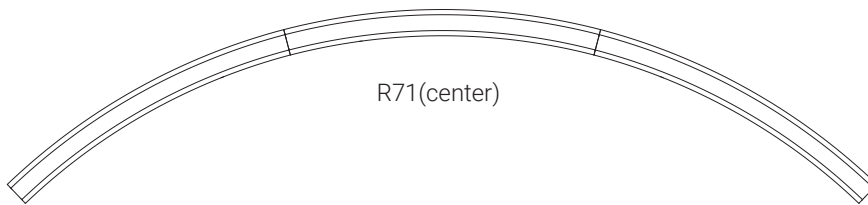


RIPPLE

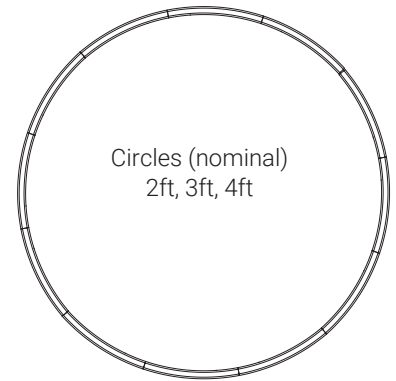


R284(center)

CIRCLE

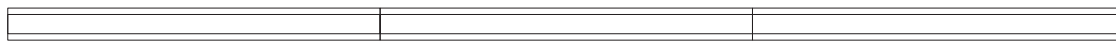


R71(center)

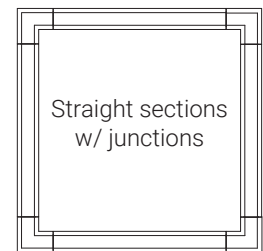
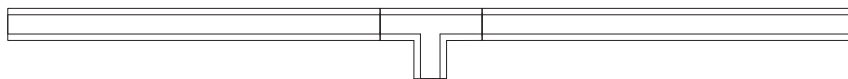


Circles (nominal)
2ft, 3ft, 4ft

STRAIGHT

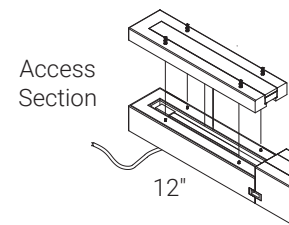
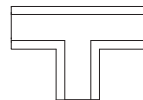
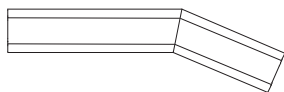


STRAIGHT WITH JUNCTION



Straight sections
w/ junctions

FORTACAST JUNCTION SECTIONS



Access
Section

12"

* Specifications sheets are subject to change without notification.