



Raiders Headquarters | Henderson, NV

FORTACAST™

Drive-over Inground Lighting patent pending

Overcoming the high cost and limitations of drive-over lines of light is now easy with Organic Lighting's® revolutionary buriable polymer concrete FortaCast™ lighting fixtures. The structural, self supporting fixtures can be installed in roadways, paths or stonework with the ease of installing pavers. FortaCast™ fixtures lock together to form continuous illuminated straight or curved lines. Encapsulated, diffused LEDs are flood and typhoon proof with IP68 submersible sealed LEDs. Walk-over and drive-over applications support up to 10,000 PSI.

Nothing but the best

- Highest quality
- Extreme environment tested
- Up to 100,000 hours lifetime

100% safe

- UL Listed to 2108 - submersible
- Circuit protects each LED individually

Style and function

- Made for the outdoors with built-in drainage
- Self supporting - no secondary installation necessary
- Perfectly diffused illumination
- Continuous runs
- Low energy -1.83W/ft. | RGBW 2.74W/ft.
- Supports up to 10,000 PSI

Let's discuss your project!

Have a project or idea? Contact us. We are here to help.

Email sales@organiclighting.com **Call** 626-969-6140

For more information, visit our website:

<https://organiclighting.com/fortacast/>



YOU COULDN'T DO THIS...UNTIL NOW!

The Reimagining of Drive-over Lighting



Willow Street Plaza | Fort Collins, CO

Aqueon®- Not your Average LED Strip

Solving the problem of creating easily installed drive-over continuous linear lighting started with finding a solution to withstanding natural forces. Achieving this required lighting to match the longevity of the structure. They had to be flood proof, vibration proof, and capable of withstanding the harshest environments. Aqueon® is a new type of flexible light. Superior standards, new materials, new methods, military grade components and advanced circuit design. DMX programmable and streaming digital pixel models available.



2400K



3000K



3500K



4000K



5000K

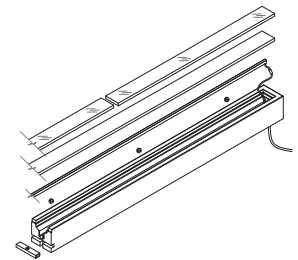
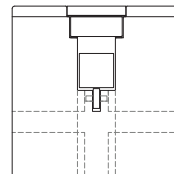


RGBW

*more colors available

Contractor Friendly Installation

3' long FortaCast™ sections are set in place, connect and lock together. Numbered sections are delivered to site, ready for installation. After all construction and lenses are in place, the Aqueon® LED lighting is installed from one end of the run. Miniature rollers guide the LED strip to the end of the run. Simple!



Customizable

FortaCast™ (patent pending) Inground Lighting is available in custom shapes. Design details can be specified into lines, circles, and curves. Special surface finishes and colors available. Now available in standard 2', 3', and 4' standalone fixtures as well!