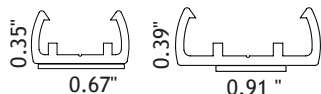


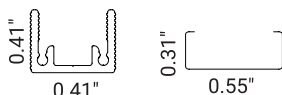
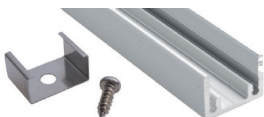
OrgaLED® Standard Mounting

PET CHANNEL



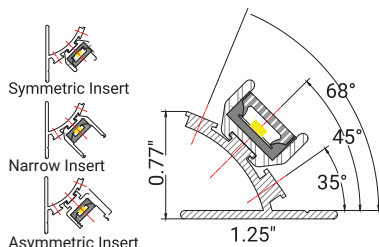
- PET channel is self adhesive
- an internal grooves allow for a flat head screw
- 39" length is cuttable
- Available in Clear or White
- 0.5"W or 0.75"W options

ALUMINUM CHANNEL & CLIP



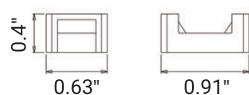
- Aluminum Channel with internal grooves allow for a flat head screw
- 39" length is cuttable
- Clip available for easy installation and/or removal, sold separately
- OrgaLED Top will sit flush in the channel

ANGLED CHANNEL



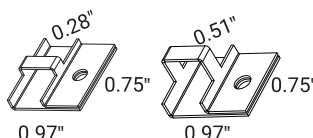
- Angled Extrusions sits in a 90° corner
- OrgaLED Top will sit flush in the channel
- The insert options for 35°, 45° and 68° angles, sold separately
- Can be mounted with 3m adhesive or drilled in to surface
- Sold per foot

MOUNTING SADDLE



- Nylon Saddles intended for curved surfaces
- Includes screw and tie wrap
- Package includes 25 count

STAINLESS STEEL CLIP



- Stainless Steel Clip available for OrgaLED Top or Side
- Clip wraps around OrgaLED strip for a secure fit
- 16-18" spacing recommended

PART NUMBER & SPECIFICATIONS

Standard Mounting

Part # Description

011368	PET White Mounting Channel, L39", 0.5"W
011369	PET Clear Mounting Channel, L39", 0.5"W
011370	PET Clear Mounting Channel, L39", 0.75"W
011372	PET White Mounting Channel, L39", 0.75"W
012851	Aluminum Mounting Channel, L39", 0.5"W (clip not included)
012850	Clip for Aluminum Mounting Channel
011365	Angled Aluminum Extrusion (insert not included)
011584	Standard Insert for Angled Extrusion
011588	Narrow Insert for Angled Extrusion
011586	Asymmetric Insert for Angled Extrusion
011375	Mounting Saddles, 25pk
011378	Stainless Steel Top Clip
011373	Stainless Steel Side Clip
012957	LEDtube One

Project

Type

Date

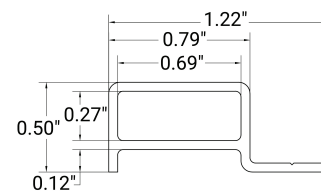
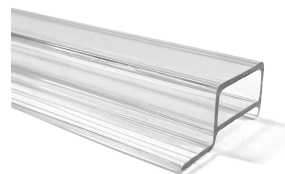
COMPATIBILITY

All Standard Mounting options are compatible with OrgaLED® Top and Side emitting except for LEDtube One.

OrgaLED® Diffuse is compatible with the Standard Mounting options except the Stainless Steel Clips.

LEDtube® One

PATENT PENDING



- Compatible with OrgaLED® Top LED Strips
- Slide-in lighting for easy installation and maintenance
- Transparent high quality polycarbonate, 1/20" thick
- Can be installed with double-sided adhesive or #4 screws (by others)
- 2" spacing recommended for Bi-directional LED strip feeds
- Sold in 8ft lengths



Specifications are correct at the time of publishing, but may be modified or improved in accordance with current electrical, safety or manufacturing methods without notification.