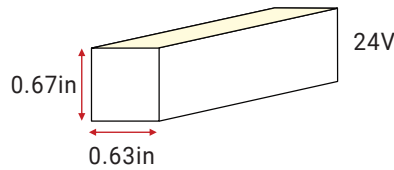


# Aqueon® Diffuse Mono



A new standard of flexible light; superior standards new materials, new methods, military grade components and advanced circuit design to create a flood proof; vibration proof seamless light. Our constant current design ensures to maintain a full illumination in continuous lengths up to 49ft. Available in both vertical and horizontal bending. IP67 or IP68 submersible. Premium Nichia LEDs. Single bin for accurate color rendering, minimal color shift and exceptional color consistency, with a CRI of 95. Full dimmable.

- Submersible; UL Listed, 676
- Horizontal or Vertical bending options
- End to end continuous illumination
- Up to 49.2ft continuous runs; Flood and vibration proof
- Cuttable every 2" (White, Green, Blue) & 3.25" (Red, Amber)
- 2200K, 2700K, 3000K, 3500K, 4000K, 5700K, Red, Green, Blue and Wildlife Amber options available
- Ultra low energy; 1.8W/ft
- 11.8" minimum bending diameter; 5.5" minimum bending radius
- 12 year limited warranty; 50,000hrs white, 100,000hrs color
- Dimmable with Pulse Width Modulation & DMX
- UV/IR protected PVC encapsulation
- Ambient working temperature -4°F - 113°F

## PART NUMBER & SPECIFICATIONS

	Part #	CCT	Max. Length	LEDs/ft	Lm/ft	W/ft	
Horizontal Bending Model	052204	2200K	49.2 ft	32	61	1.83	
	052205	2700K	49.2 ft	32	61	1.83	
	052236	3000K	49.2 ft	32	61	1.83	
	052237	3500K	49.2 ft	32	68.6	1.83	
	052238	4000K	49.2 ft	32	68.6	1.83	
	052239	5700K	49.2 ft	32	61	1.83	
	052210	Red	49.2 ft	32	19.8	1.22	
	052211	Green	49.2 ft	32	45.7	1.83	
	052212	Blue	49.2 ft	32	7.6	1.83	
	052213	Amber	49.2 ft	32	19.8	1.22	
	Vertical Bending Model	052203	2200K	49.2 ft	32	64	1.83
		052229	2700K	49.2 ft	32	64	1.83
		052230	3000K	49.2 ft	32	64	1.83
052231		3500K	49.2 ft	32	73.2	1.83	
052232		4000K	49.2 ft	32	73.2	1.83	
052233		5700K	49.2 ft	32	64	1.83	
052206		Red	49.2 ft	32	19.8	1.22	
052207		Green	49.2 ft	32	45.7	1.83	
052208		Blue	49.2 ft	32	7.6	1.83	
052209		Amber	49.2 ft	32	19.8	1.22	

## ORGANIC LIGHTING®

Project

Type

Date

### ACCESSORIES

Factory assembled LED strips offer a variety of IP68 connectors with customizable cord lengths. See pg 2.



### MOUNTING

Various plastic, aluminum and stainless steel mounting options. See pg 3.

### POWER SUPPLIES

24V DC Power Supplies ranging from 25W-300W.



#### ELV 0-10V; IP20, 120-277V

25W #011380  
40W #011381

#### ELV 0-10V; IP67, 120-277V

60W #011382  
75W #011383  
100W #011384



#### Magnetic 0-10V; IP67, 120V

20W #011350  
40W #011351  
50W #011352  
60W #011353  
96W #011354  
100W #011355  
150W #011356  
200W #011357  
300W #011358

#### Magnetic 0-10V; IP67, 277V

60W #011359  
150W #011360



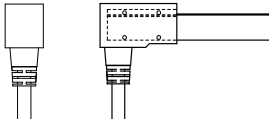
Specifications are correct at the time of publishing, but may be modified or improved in accordance with current electrical, safety or manufacturing methods without notification.

# Aqueon® Diffuse Mono

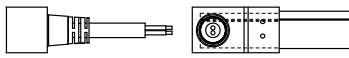
## CONNECTORS & ACCESSORIES

Factory assembled 2-wired Aqueon Mono IP68 submersible accessories include end caps, extension cords and connectors with customizable cord lengths. IP67 self assembly connectors are also available.

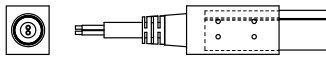
### Factory Assembled IP68 Connectors



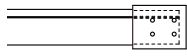
**Bottom Feed Connector, 16'L**  
#052250-CU16



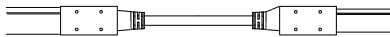
**Side Feed Connector, 16'L**  
#052263-CU16



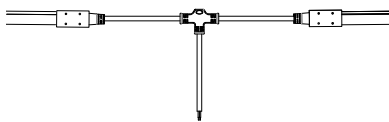
**End Connector, 16'L**  
#052278-CU16



**End Cap**  
#052286

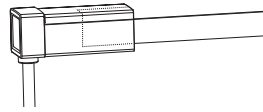


**Extension**  
#052279

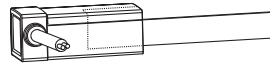


**T-Connector**  
#052280

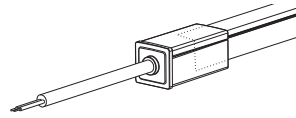
### Field Assembly Snap on IP67 Connectors



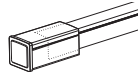
**Bottom Snap Connector, 16'L**  
#052250S-CU16



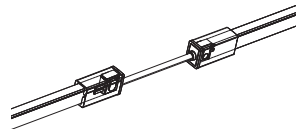
**Side Feed Snap Connector, 16'L**  
#052263S-CU16



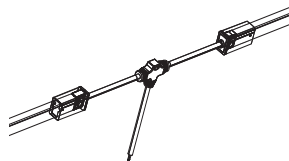
**End Snap Connector, 16'L**  
#052278S-CU16



**Snap End Cap**  
#052286S



**Snap Extension**  
#052279S



**Snap T-Connector**  
#052280S

ORGANIC LIGHTING®

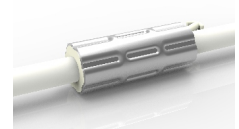
Project

Type

Date

## ANTI-WICKING

All connections include a ferrule on the power feed to prevent water wicking through the connection point.



Specifications are correct at the time of publishing, but may be modified or improved in accordance with current electrical, safety or manufacturing methods without notification.

# Aqueon® Diffuse Mono

## MOUNTING

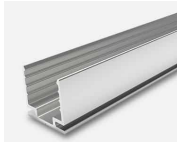
PET and Aluminum mounting channels to match any installation.

Project

Type

Date

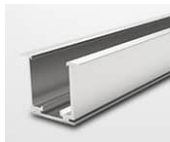
### Aluminum Channel



- High-quality Aluminum
- Light-weight
- Cost-Effective
- Available with a Flange for Recessed Installation

3'3"L - #053000  
1.38"L - #053001

### Flanged Aluminum Channel



- High-quality Aluminum
- Light-weight
- Cost-Effective
- Flange for Recessed Installation

3'3"L - #053002  
1.38"L - #053003

### Serrated Aluminum Channel



- Light-weight
- Easy to Install & Dismantle
- Continuous & Strong Gripping
- For Suspended Installations
- Available with a Flange for Recessed Installation

3'3"L - #053008  
0.8"L - #053009

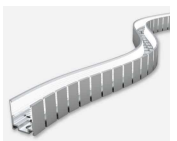
### Flanged Serrated Aluminum Channel



- Light-weight
- Easy to Install & Dismantle
- Continuous & Strong Gripping
- Flange for Recessed Installation

3'3"L - #053010  
0.8"L - #053011

### Bendable Serrated Aluminum Channel



- High-quality Aluminum
- Easy to Install & Dismantle
- Continuous & Strong Gripping
- Memory Retaining
- Perfect for Curved Installations

3'3"L - #053012  
1.7"L - #053013

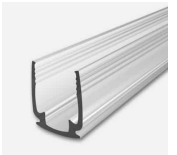
### Hybrid Channel



- Flexible with a rigid base
- PET & Aluminum

3'3"L - #053006  
1.38"L - #053007

### PET Channel



- Corrosion proof for Submersion Resistance
- Light-weight easily cuttable

3'3"L - #053004  
1.38"L - #053005



Specifications are correct at the time of publishing, but may be modified or improved in accordance with current electrical, safety or manufacturing methods without notification.