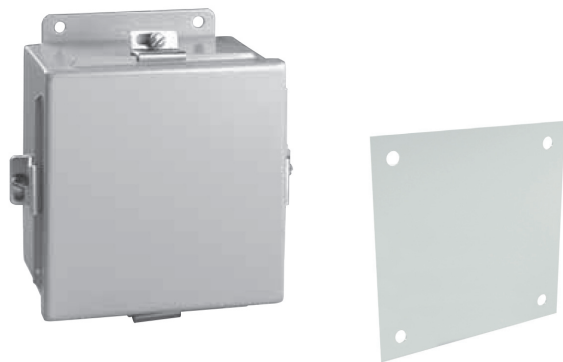


# OrgaLED® Nema 4 Box + Subpanel

Wet Enclosure



ORGANIC LIGHTING®

Project

Type

Date

## NEMA 4 JIC Lift-Off Cover Wall-Mount Box

Designed for use as instrument housings, electrical control enclosures, terminal wiring boxes or electrical junction boxes.

Provides protection where equipment is hosed down, very wet, or in outdoor applications.

## NEMA 4 Subpanel

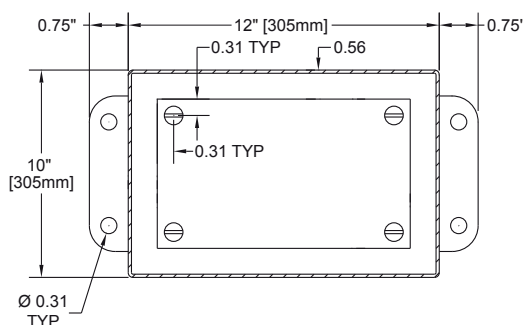
Painted steel is white polyester powder over phosphatized surfaces Panels listed fit the following enclosures:

### Construction

Body 14 gauge steel

Doors 16 gauge steel

- Continuously welded seams ground smooth, less knockouts or holes
- Closed cell oil resistant neoprene gasket
- External mounting plate, top and bottom of enclosure
- Weld nuts are provided to secure optional panel
- Stainless steel screws and clamps on four sides of cover to assure water tight seal
- Grounding provisions provided
- Optional back panels and terminal kits must be ordered separately



### Finish

ANSI-61 gray polyester powder inside and out  
Optional back panels are white polyester powder  
Optional "G" panels have a conductive finish

### Safety Certifications

UL 50, CSA certified, NEMA/EEMAC, JIC EL-1-71

## PART NUMBER & SPECIFICATIONS

Part #	Description	Dimension (LxWxH)
011300	Nema 4 Box	12"H x 10"W x 5"D
011301	Nema 4 Subpanel	12"H x 10"W x .09"D



Specifications are correct at the time of publishing, but may be modified or improved in accordance with current electrical, safety or manufacturing methods without notification.