

Index

OrgaLED CONNECTORS, TYPES & FEATURES	1
OrgaLED TOP CONNECTORS & EXTENSIONS (IP40)	2
OrgaLED SIDE CONNECTORS & EXTENSIONS (IP40)	3
OrgaLED DIFFUSE CONNECTORS & EXTENSIONS (IP68)	4
OrgaLED PU CONNECTORS & EXTENSIONS (IP67/68)	5
OrgaLED PCB CONNECTORS & EXTENSIONS (IP20)	6
SYMBOLS & DISCLAIMER	7

Features

- Made in USA/EU
- Available in various lengths
- Available in various IP ratings
- Extensive range of accessories
- Plug & Play system

OrgaLED Connectors

The OrgaLED® System offers a range of ‘Plug & Play’ products, the OrgaLED® Connector Sets allow a friendly and easy to assemble installation.

Top and Side LED strips use the standard push-fit connector sets for IP40 applications are supplied with a termination end cap. Combine with one of our IP67 solutions for outdoor rating.

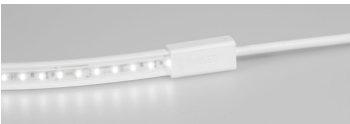
Looking for an IP68 solution? OrgaLED PU Connectors are available for OrgaLED fixtures.

**Require a fast installation with instant waterproof usage - ask us about the pre-assembled OrgaLED Mirror Welded Connectors.**

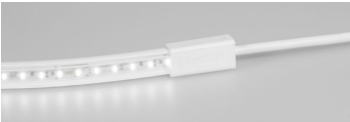
For the latest version of this datasheet, visit our website:  
[www.organiclighting.com](http://www.organiclighting.com)

Connector Types

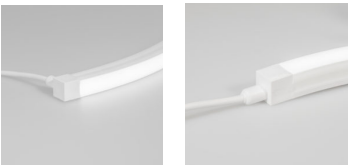
OrgaLED Top Connectors



OrgaLED Side Connectors



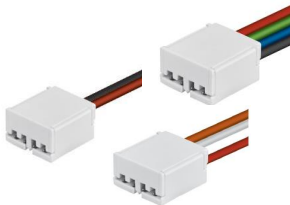
OrgaLED Diffuse Connectors



OrgaLED IP67/68 PU Connectors



OrgaLED PCB Connectors

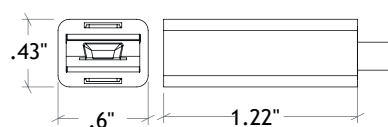


## OrgaLED Top Connectors & Extensions

	Top Mono Connector Set	Top TW Connector Set	Top RGB Connector Set	Top Mirror Weld Connector Set	Top End Cap	Top Mono Extension	Top TW Extension	Top RGB Extension
Product code	011201	011191	011205	011290	011503	011208	011192	011210
Dimensions	1.22" x .6"x .43"			1.11" x .59" x .45"	.46" x .25" x .22"	1.22" x .6"x .043"		
Cord length	16'3"					10"		
Degree of protection (IP)	IP40 (IP68 with factory connections/kits or mirror weld)							
Material	White Polycarbonate							
Power cord	White, PVC							
Weight	6.17 oz			6.17 oz	0.04 oz	1.02 oz		
To be used with	OrgaLED Top Strips							

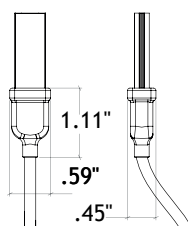
### Top Connector Set

IP40



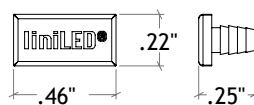
### Top Mirror Weld

IP68



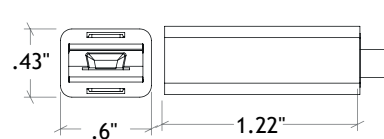
### Top End Cap

IP40



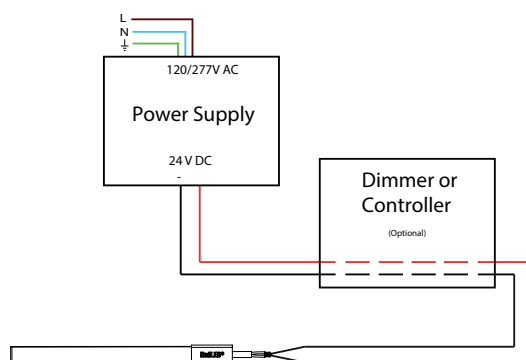
### Top Extension Cord

IP40

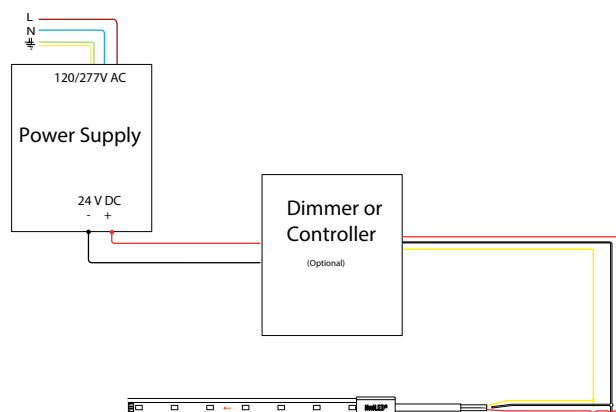


## Power Connection

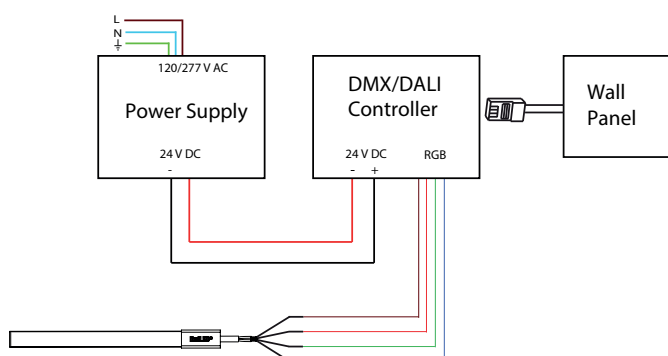
### Mono



### Tunable White



### RGB

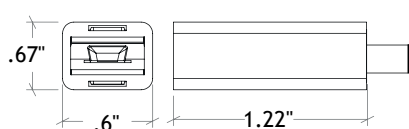


## OrgaLED Side Connectors & Extensions

	Side Mono Connector Set	Side TW Connector Set	Side RGB Connector Set	Side Mirror Weld Connector Set	Side End Cap	Side Mono Extension	Side TW Extension	Side RGB Extension
Product code	011203	011194	011207	011291	011504	011209	011195	011211
Dimensions	1.22" x .6"x .67"			1.1" x .67" x .67"	.25" x .47"x .47"	1.22" x .6"x .67"		
Cord length	16'3"					10"		
Degree of protection (IP)	IP40 (IP68 with factory connections/kits or mirror weld)							
Material	White Polycarbonate							
Power cord	White, PVC							
Weight	6.31 oz			6.17 oz	0.6 oz	1.2 oz		
To be used with	OrgaLED Side Strips							

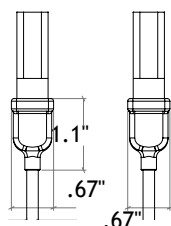
### Side Connector Set

IP40



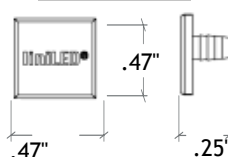
### Side Mirror Weld

IP68



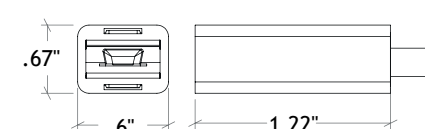
### Side End Cap

IP40



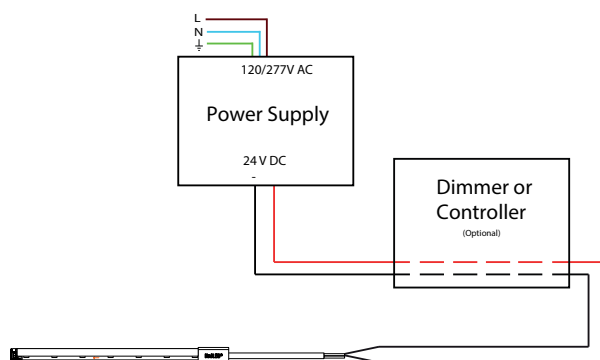
### Side Extension Cord

IP40

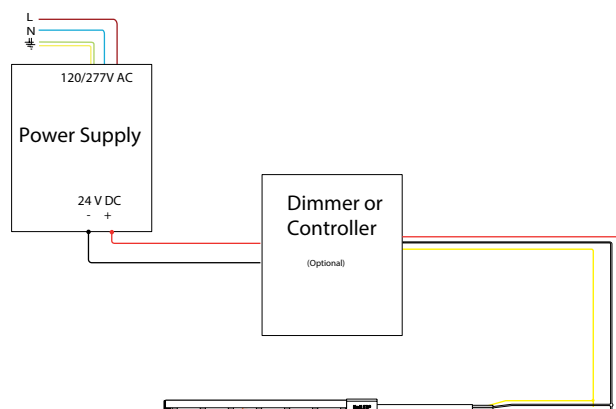


## Power Connection

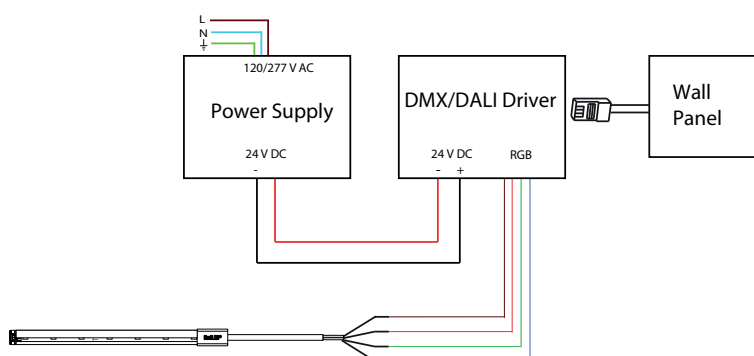
### Mono



### Tunable White



### RGB

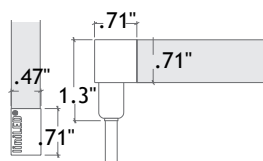


## OrgaLED Diffuse Connectors & Extensions (IP68)

	Diffuse 1/2" Angle Connector	Diffuse 1/2" Straight Connector	Diffuse 1/2" Angle Extension	Diffuse 1/2" Straight Extension	Diffuse 3/4" Angle Connector	Diffuse 3/4" Straight Connector	Diffuse 3/4" Angle Extension	Diffuse 3/4" Straight Extension
Product code	011261	011271	011277	011279	011246	011251	011278	011276
Dimensions	.71" x .47" x 1.3"(LWH)				.71" x .47" x 1.3"(LWH)			
Cord length	16'3"		10"		16'3"		10"	
Degree of protection (IP)	IP68 pre-assembled connections							
Material	White Polycarbonate							
Power cord	White, PVC							
To be used with	OrgaLED Top & Side Diffuse 1/2" Strips				OrgaLED Top Diffuse 3/4" Strips			

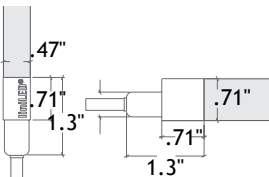
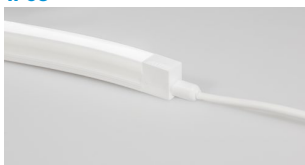
### Diffuse 1/2" Angle Connector

IP68



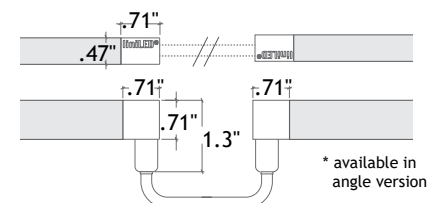
### Diffuse 1/2" Straight Connector

IP68



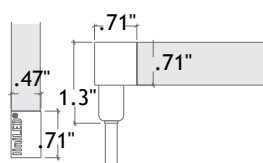
### Diffuse 1/2" Straight Connector Extension Cord

IP40



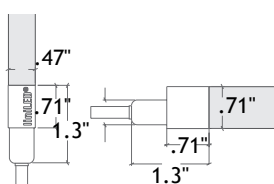
### Diffuse 3/4" Angle Connector

IP68



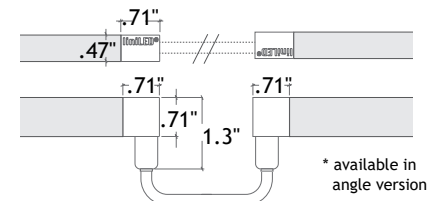
### Diffuse 3/4" Straight Connector

IP68



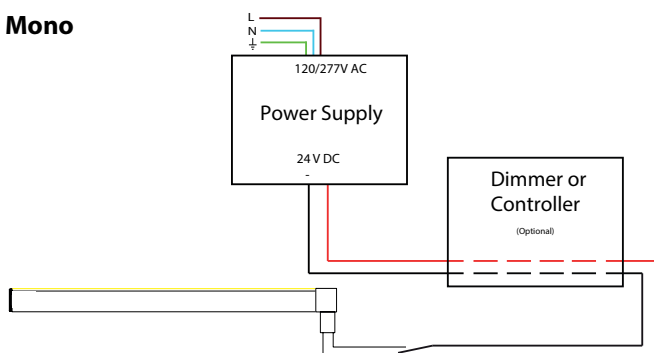
### Diffuse 3/4" Straight Connector Extension Cord

IP40



## Power Connection

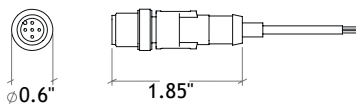
### Mono



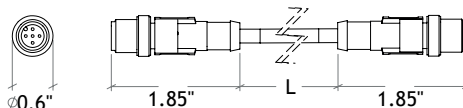
## OrgaLED PU Connectors & Extensions (IP67)

	PU Mono Connector	PU Mono Extension	PU RGB Connector	PU RGB Extension	PU Splitter
Product code	014507	014509	014517	014519	014510
Dimensions	1.85" x 0.6" (LW)				2.2" x .6" x 1.3" (LWH)
Cord length	33', 16' available				
Ambient temperature	-13°F.. 194°F				
Degree of protection	IP67/IP68				
Rated current at 40°C	4 A				
Rated voltage	60 V				
Number of positions	4				
Contact resistance	≤ 5 mΩ				
Insulation resistance	≥ 100 mΩ				
Cable type	PUR halogen-free,black				
UL AWM style	20549/ 10493 (80°C/ 300 V)				
Conductor cross section	4x 0.01" 2		5x 0.01" 2		
AWG signal line	22				
Wire colors	+ = Brown & White, - = Blue & Black ( - Red = Black, - Green = Green-yellow for RGB)				
External cable dia. D	0.19" ± 0.006"		0.2" ± 0.006"		
Smallest bedding radius	0.98"				
To be used with	OrgaLED, Forta Precast, Marker Lights, Encapsulated Aeris				

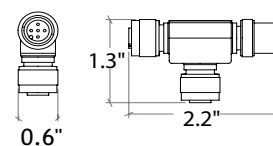
### PU Connector IP68



### PU Extension Cord IP68



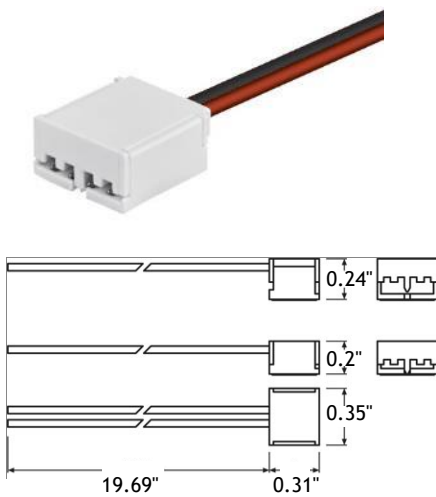
### PU Splitter IP68



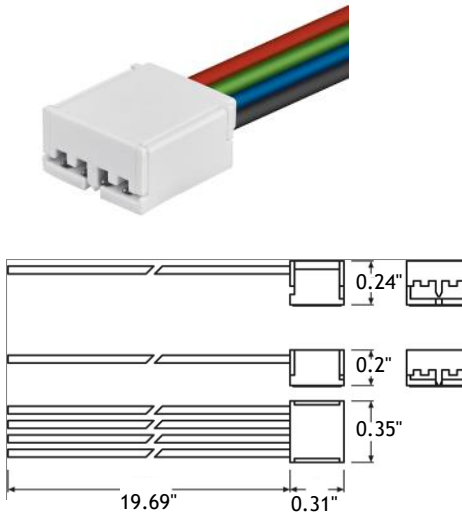
## OrgaLED PCB Connectors & Extensions (IP20)

	PCB Mono Connector	PCB RGB Connector	PCB TW Connector	PCB Inline Connector	PCB Extension	PCB Extension	PCB Extension
Product code	011750	011752	011798	011797	010897	011795	010899
Dimensions	.031" x 0.35" x 0.24" (LWH)						
Cord length	19.69"			NA	1.18"	5.9"	11.81"
Degree of protection (IP)	IP20						
Material	White PBT GF						
To be used with	OrgaLED PCB Strips						

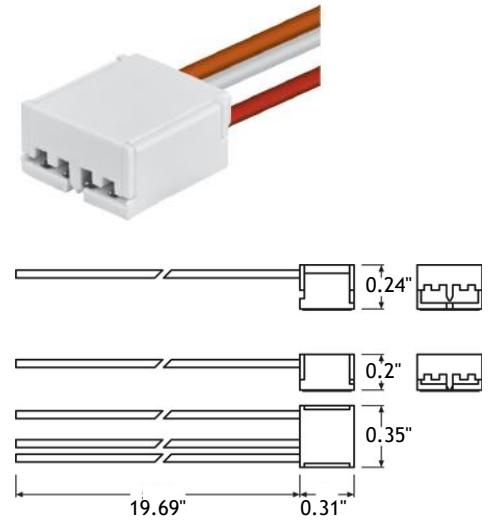
### PCB Mono Connector IP20



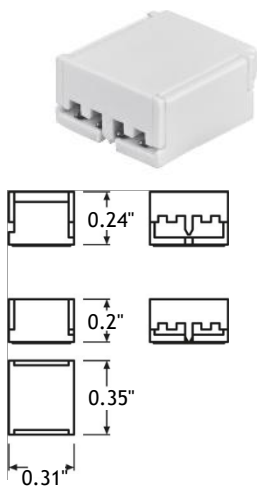
### PCB RGB Connector IP20



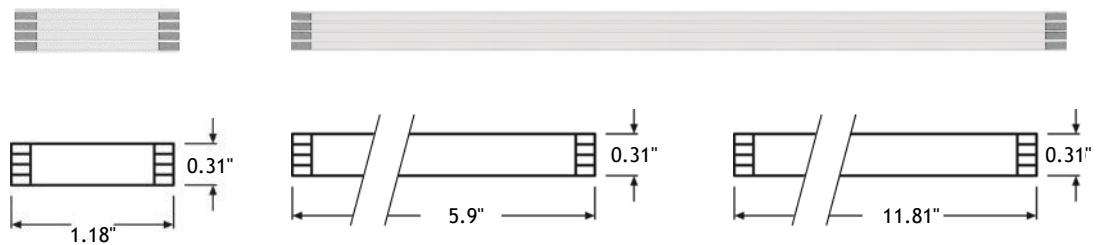
### PCB Tunable White Connector IP20



### PCB Inline Connector



### PCB Extension Wires



## Symbols

-  UL is a world leader in product safety testing and certification. UL sets standards and tests products to make sure they meet standards.
-  The ETL Listed mark indicates that your product has been tested by Intertek and found in compliance with accepted UL standards.
-  Electro Static Discharge (ESD) sensitive device, apply standard ESD precautions when handling the product.
-  Manufacturer's declaration that the product meets the applicable EC directives.
-  Suitable for mounting on all surfaces and suitable to cover with insulating material.
-  Restriction of Hazardous Substances (RoHS): product complies with the RoHS directive and each homogeneous material does not exceed the limits for the materials mentioned under the RoHS directive (Pb, Hg, Cd, Cr6+, PBB and PBDE).
-  This product can be both IP40 and IP68 depending on the configuration and application. See the documentation for the exact IP rating.
-  Bending of the LED strip is possible with a radius of  $\geq 1.2$  inches in the specified direction.
-  Electrical appliance class III: this product is designed to be supplied from an extra-low voltage ( $\leq 60.0$  V DC or  $\leq 42.4$  V AC).
-  System guarantee of 5 years when the complete system consist of OrgaLED® products with the 5 year system warranty logo.
-  Product is resistant against ultraviolet (UV) light or sunlight. Non-UV resistant products can degrade or discolor fast when exposed to UV.
-  Product can be cleaned with normal cleaning agents as specified in the datasheet under 'chemical compliances.'
-  This product can be stored and used below 32 degrees Fahrenheit. Verify the minimum storage and operation temperature in the datasheet for the lowest temperature allowed.
-  This product can be applied in seawater and its environment. Elements in seawater will have no harmful effect on the product. For chemical specifications see datasheet. Verify the IP rating for proper use.
-  This product can be applied inside swimming pool environments. Elements in the air will have no harmful effect on the product. For chemical specifications of these elements see datasheet. Verify the IP rating for proper use.
-  This product is available on request and can be submerged n swimming pools and their environments. Disinfectants will have no harmful effect on product. For chemical specifications of these elements see datasheet. Verify the IP rating for proper use.
-  The CRI value of this product is 80 or higher.
-  The binning tolerance of this product is 2 MacAdam.

## Disclaimer

The published information is checked to be as accurate as possible, however Organic Lighting, or any reseller of OrgaLED® cannot be held liable for any damages resulting from errors or outdated information. Organic Lighting reserves the right to modify the information without informing the costumers. When this document is printed or downloaded, please check for the latest version on the internet, the most up to date information will be published on [www.organiclighting.com](http://www.organiclighting.com). This product should not be used in applications, devices or systems where incorrect operation of the product may result in personal injury (includes emergency lighting) without written permission from the board of Organic Lighting. If nevertheless used in such applications, devices or systems Organic Lighting cannot be held liable for any resulting injury.