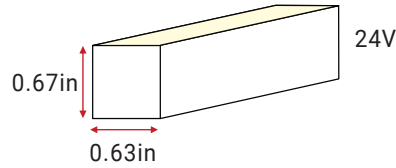


Aqueon® Diffuse RGB & RGBW



Structurally superior for the most discerning applications, submersible; flood and vibration proof. Advanced circuit design with military grade components. Aqueon RGB & RGBW, color mixing, used to create custom effects for any application. Available in both vertical and horizontal bending. IP67 or IP68-tested for use in the most adverse environment. Premium Nichia LEDs for accurate color rendering, and exceptional color consistency. Fully dimmable.

- Submersible; UL Listed, 676
- Horizontal or Vertical bending options
- End to end continuous illumination
- Up to 49.2ft continuous runs; Flood and vibration proof
- Cuttable every 3.28"
- Static RGB and RGBW options
- RGBW's White LED is available in 2700K, 3000K and 4000K
- 11.8" minimum bending diameter; 5.5" minimum bending radius
- 12 year limited warranty; 50,000hrs white, 100,000hrs color
- Dimmable Pulse Width Modulation & DMX
- UV/IR protected PVC encapsulation
- Ambient working temperature -4°F - 113°F

PART NUMBER & SPECIFICATIONS

	Part #	CCT	Max. Length	LEDs/ft	Lm/ft	W/ft
Horizontal Bending Model	052245	RGB	49.2ft	22	45.7	1.83
	052265	RGBW-27K	49.2ft	25	74.7	2.74
	052273	RGBW-30K	49.2ft	25	74.7	2.74
	052282	RGBW-40K	49.2ft	25	74.7	2.74
Vertical Bending Model	052235	RGB	49.2ft	22	45.7	1.83
	052264	RGBW-27K	49.2ft	25	74.7	2.74
	052271	RGBW-30K	49.2ft	25	74.7	2.74
	052281	RGBW-40K	49.2ft	25	74.7	2.74

ORGANIC LIGHTING®

Project

Type

Date

ACCESSORIES

Factory assembled LED strips offer a variety of IP68 connectors with customizable cord lengths. See pg 2.



MOUNTING

Various plastic, aluminum and stainless steel mounting options. See pg 3.

POWER SUPPLIES

24V DC Power Supplies ranging from 25W-300W.



ELV 0-10V; IP20, 120-277V

25W #011380
40W #011381

ELV 0-10V; IP67, 120-277V

60W #011382
75W #011383
100W #011384



Magnetic 0-10V; IP67, 120V

20W #011350
40W #011351
50W #011352
60W #011353
96W #011354
100W #011355
150W #011356
200W #011357
300W #011358

Magnetic 0-10V; IP67, 277V

60W #011359
150W #011360



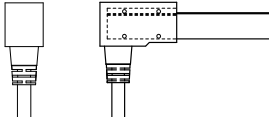
Specifications are correct at the time of publishing, but may be modified or improved in accordance with current electrical, safety or manufacturing methods without notification.

Aqueon® Diffuse RGB & RGBW

CONNECTORS & ACCESSORIES

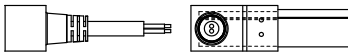
Factory assembled 4-wired Aqueon RGB and 5-wired RGBW IP68 submersible accessories include end caps, extension cords and connectors with customizable cord lengths. IP67 self assembly connectors are also available.

Factory Assembled IP68 Connectors



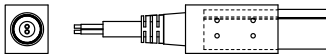
RGB Bottom Feed Connector, 16'L
#052253-CU16

RGBW Bottom Feed Connector, 16'L
#052260-CU16



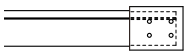
RGB Side Feed Connector, 16'L
#052254-CU16

RGBW Side Feed Connector, 16'L
#052261-CU16



RGB End Connector, 16'L
#052252-CU16

RGBW End Connector, 16'L
#052259-CU16

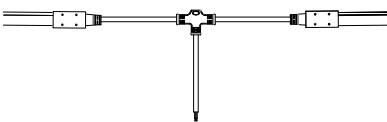


End Cap
#052286



RGB Extension
#052274

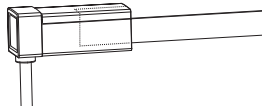
RGBW Extension
#052275



RGB T-Connector
#052276

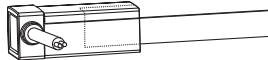
RGBW T-Connector
#052277

Field Assembly Snap on IP67 Connectors



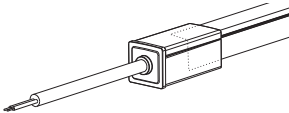
RGB Bottom Snap Connector, 16'L
#052253S-CU16

RGBW Bottom Snap Connector, 16'L
#052260S-CU16



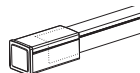
RGB Side Feed Snap Connector, 16'L
#052254S-CU16

RGBW Side Feed Snap Connector, 16'L
#052261S-CU16

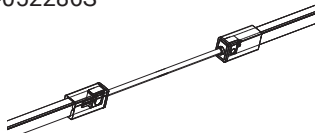


Pixel End Snap Connector, 16'L
#052252S-CU16

Pixel End Snap Connector, 16'L
#052259S-CU16

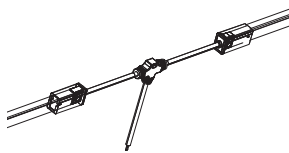


Snap End Cap
#052286S



RGB Snap Extension
#052274S

RGBW Snap Extension
#052275S



RGB Snap T-Connector
#052276S

RGBW Snap T-Connector
#052277S

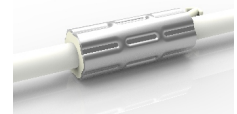
Project

Type

Date

ANTI-WICKING

All connections include a ferrule on the power feed to prevent water wicking through the connection point.



CONTROLLERS

RGB/RGBW DMX/
Dali/0-10V Control, 4
control channels.



Digital Controller

100W #011343
180W #011344
720W #011345



Digital Controller & Power Supply Combination

100W #011341



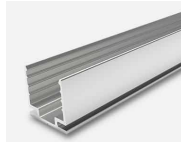
Specifications are correct at the time of publishing, but may be modified or improved in accordance with current electrical, safety or manufacturing methods without notification.

Aqueon® Diffuse RGB & RGBW

MOUNTING

PET and Aluminum mounting channels to match any installation.

Aluminum Channel



- High-quality Aluminum
- Light-weight
- Cost-Effective
- Available with a Flange for Recessed Installation

3'3"L - #053000
1.38"L - #053001

Flanged Aluminum Channel



- High-quality Aluminum
- Light-weight
- Cost-Effective
- Flange for Recessed Installation

3'3"L - #053002
1.38"L - #053003

Serrated Aluminum Channel



- Light-weight
- Easy to Install & Dismantle
- Continuous & Strong Gripping
- For Suspended Installations
- Available with a Flange for Recessed Installation

3'3"L - #053008
0.8"L - #053009

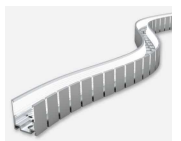
Flanged Serrated Aluminum Channel



- Light-weight
- Easy to Install & Dismantle
- Continuous & Strong Gripping
- Flange for Recessed Installation

3'3"L - #053010
0.8"L - #053011

Bendable Serrated Aluminum Channel



- High-quality Aluminum
- Easy to Install & Dismantle
- Continuous & Strong Gripping
- Memory Retaining
- Perfect for Curved Installations

3'3"L - #053012
1.7"L - #053013

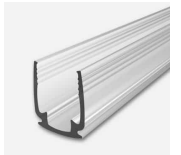
Hybrid Channel



- Flexible with a rigid base
- PET & Aluminum

3'3"L - #053006
1.38"L - #053007

PET Channel



- Corrosion proof for Submersion Resistance
- Light-weight easily cuttable

3'3"L - #053004
1.38"L - #053005

ORGANIC LIGHTING®

Project

Type

Date



Specifications are correct at the time of publishing, but may be modified or improved in accordance with current electrical, safety or manufacturing methods without notification.