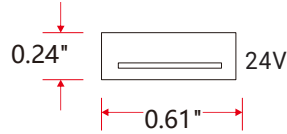


# Aqueon® Flat RGB & RGBW



A new standard of flexible light; superior standards new materials, new methods, military grade components and advanced circuit design to create a flood proof; vibration proof seamless light. Our constant current design ensures to maintain a full illumination in continuous lengths up to 49ft. IP67 connections. Premium Nichia LEDs. Single bin for accurate color rendering, minimal color shift and exceptional color consistency, with a CRI of 95. Full dimmable.

- Wet Location; UL Listed, 1598
- Vertical Bending
- End to end continuous illumination
- Up to 49.2ft continuous runs
- Cuttable every 3.25"
- Static RGB and RGBW options
- RGBW's White LED is available in 2700K, 3000K and 4000K
- 2" minimum bending diameter; 1" minimum bending radius
- 12 year limited warranty; 50,000hrs white, 100,000hrs color
- Dimmable with Pulse Width Modulation & DMX
- UV/IR protected PVC encapsulation
- Ambient working temperature -4°F - 113°F

## PART NUMBER & SPECIFICATIONS

Vertical Bending Model



Part #	CCT	Max. Length	LEDs/ft	Lm/ft	W/ft
051629	RGB	49.2 ft	18	53.4	1.83
051630	RGBW-27K	49.2 ft	18	89.2	2.4
051631	RGBW-30K	49.2 ft	18	89.2	2.4
051632	RGBW-40K	49.2 ft	18	89.2	2.4

## ORGANIC LIGHTING®

Project
Type
Date

## ACCESSORIES

Factory assembled LED strips offer a variety of IP67 connectors with customizable cord lengths. See pg 2.

## MOUNTING

Various plastic, aluminum and stainless steel mounting options. See pg 3.

## POWER SUPPLIES

24V DC Power Supplies ranging from 25W-300W.



### ELV 0-10V; IP20, 120-277V

25W #011380  
40W #011381

### ELV 0-10V; IP67, 120-277V

60W #011382  
75W #011383  
100W #011384



### Magnetic 0-10V; IP67, 120V

20W #011350  
40W #011351  
50W #011352  
60W #011353  
96W #011354  
100W #011355  
150W #011356  
200W #011357  
300W #011358

### Magnetic 0-10V; IP67, 277V

60W #011359  
150W #011360



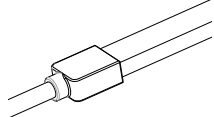
Specifications are correct at the time of publishing, but may be modified or improved in accordance with current electrical, safety or manufacturing methods without notification.

# Aqueon® Flat RGB & RGBW

## CONNECTORS & ACCESSORIES

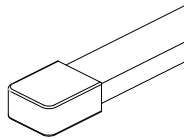
Factory assembled 4-wired Aqueon RGB and 5-wire RGBW IP67 submersible accessories include end caps, extension cords and connectors with customizable cord lengths. IP67 self assembly connectors are also available.

### Factory Assembled IP67 Connectors

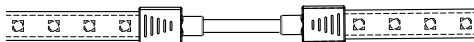


**RGB End Connector, 16'L**  
#051655-CU16

**RGBW End Connector, 16'L**  
#051652-CU16

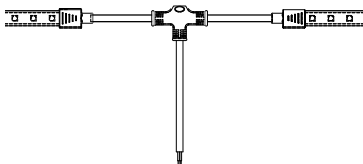


**End Cap**  
#051686



**RGB Extension**  
#051653

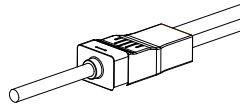
**RGBW Extension**  
#051665



**RGB T-Connector**  
#051664

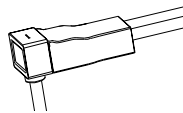
**RGBW T-Connector**  
#051666

### Field Assembly Snap on IP67 Connectors



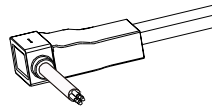
**RGB End Snap Connector, 16'L**  
#051655S-CU16

**RGBW End Snap Connector, 16'L**  
#051600S-CU16



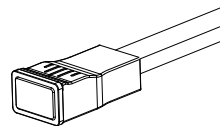
**RGB Bottom Snap Connector, 16'L**  
#051668-CU16

**RGBW Bottom Snap Connector, 16'L**  
#051668-CU16

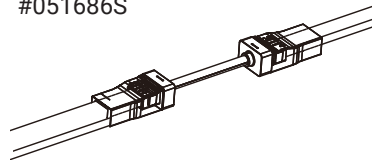


**RGB Side Snap Connector, 16'L**  
#051682S-CU16

**RGBW Side Snap Connector, 16'L**  
#051601S-CU16

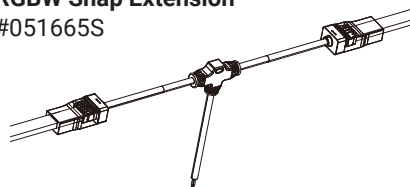


**Snap End Cap**  
#051686S



**RGB Snap Extension**  
#051653S

**RGBW Snap Extension**  
#051665S



**RGB Snap T-Connector**  
#051664S

**RGBW Snap T-Connector**  
#051666S

ORGANIC LIGHTING®

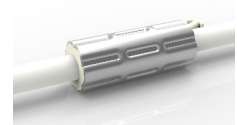
Project

Type

Date

## ANTI-WICKING

All connections include a ferrule on the power feed to prevent water wicking through the connection point.



## CONTROLLERS

RGB/RGBW DMX/  
Dali/0-10V Control, 4  
control channels.



### Digital Controller

100W #011343  
180W #011344  
720W #011345



### Digital Controller & Power Supply Combination

100W #011341



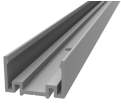
Specifications are correct at the time of publishing, but may be modified or improved in accordance with current electrical, safety or manufacturing methods without notification.

# Aqueon® Flat RGB & RGBW

## MOUNTING

PET and Aluminum mounting channels to match any installation.

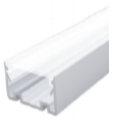
### Aluminum Channel



- High-quality Aluminum
- Light-weight
- Cost-Effective

3'3"L - #051694

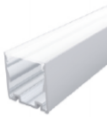
### Clear Lensed Channel, 1/2" H



- Light-weight
- Easy to Install & Dismantle
- 1/2" High, 3/4" available
- Clear lens, frosted lens available.

3'3"L - #051695

### Clear Lensed Channel, 3/4" H



- Light-weight
- Easy to Install & Dismantle
- 3/4" High, 1/2" available
- Clear lens, frosted lens available.

3'3"L - #051696

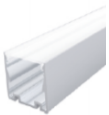
### Frosted Lensed Channel, 1/2" H



- Light-weight
- Easy to Install & Dismantle
- 1/2" High, 3/4" available
- Frosted lens, clear lens available.

3'3"L - #051697

### Frosted Lensed Channel, 3/4" H



- Light-weight
- Easy to Install & Dismantle
- 1/2" High, 3/4" available
- Clear lens, frosted lens available.

3'3"L - #051698

Project
---------

Type
------

Date
------



Specifications are correct at the time of publishing, but may be modified or improved in accordance with current electrical, safety or manufacturing methods without notification.