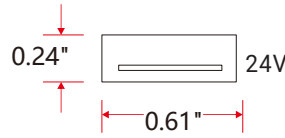


Aqueon® Flat RGB/RGBW Pixel - 24V DC

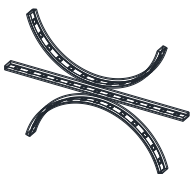


A new standard of flexible light; superior standards new materials, new methods, military grade components and advanced circuit design to create a flood proof; vibration proof seamless light. Our constant current design ensures to maintain a full illumination in continuous lengths up to 49ft. IP67 connections. Premium Nichia LEDs. Single bin for accurate color rendering, minimal color shift and exceptional color consistency, with a CRI of 95. Full dimmable.

- Wet Location; UL Listed, 1598
- Vertical Bending
- End to end continuous illumination
- Up to 49.2ft continuous runs
- Cuttable every 4.9"
- Pixel RGB and RGBW options
- RGBW's White LED is available in 2700K, 3000K and 4000K
- 2" minimum bending diameter; 1" minimum bending radius
- 12 year limited warranty; 50,000hrs white, 100,000hrs color
- Dimmable with Pulse Width Modulation & DMX
- UV/IR protected PVC encapsulation
- Ambient working temperature -4°F - 113°F

PART NUMBER & SPECIFICATIONS

Vertical Bending Model



Part #	Color	Max length	LEDs/ft	lm/ft	W/ft
051645	RGB	49.2ft	17	54.1	1.83
051647	RGBW-27K	49.2ft	17	89.2	2.43
051649	RGBW-30K	49.2ft	17	89.2	2.43
051648	RGBW-40K	49.2ft	17	89.2	2.43

Project

Type

Date

ACCESSORIES

Factory assembled LED strips offer a variety of IP67 connectors with customizable cord lengths. See pg 2.

MOUNTING

Various plastic, aluminum and stainless steel mounting options. See pg 3.

POWER SUPPLIES

24V DC Power Supplies ranging from 25W-300W.



ELV 0-10V; IP20, 120-277V

25W #011380
40W #011381

ELV 0-10V; IP67, 120-277V

60W #011382
75W #011383
100W #011384



Magnetic 0-10V; IP67, 120V

20W #011350
40W #011351
50W #011352
60W #011353
96W #011354
100W #011355
150W #011356
200W #011357
300W #011358

Magnetic 0-10V; IP67, 277V

60W #011359
150W #011360

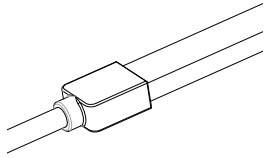


Specifications are correct at the time of publishing, but may be modified or improved in accordance with current electrical, safety or manufacturing methods without notification.

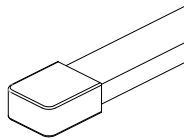
CONNECTORS & ACCESSORIES

Aqueon Pixel RGB & RGBW IP67 accessories include end caps, extension cords and connectors with customizable cord lengths. Snap accessories are field installable.
 For specifying cord lengths add *CU + cord length* to the end of your part number.

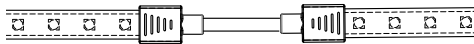
Factory Assembled IP67 Connectors



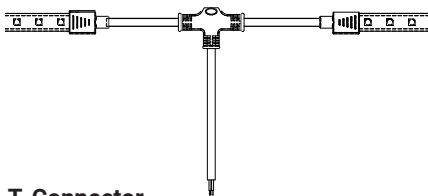
End Connector, 16'L
 #051656-CU16



End Cap
 #051686

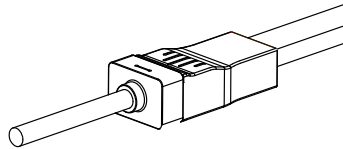


Extension
 #051659

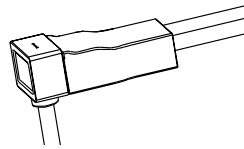


T-Connector
 #051658

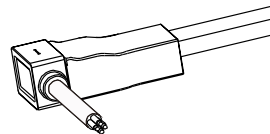
Field Assembly Snap on IP67 Connectors



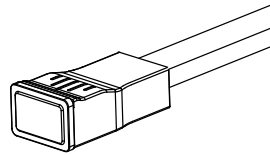
End Snap Connector, 16'L
 #051666S-CU16



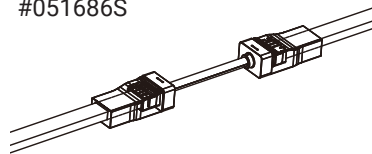
Bottom Snap Connector, 16'L
 #051605S-CU16



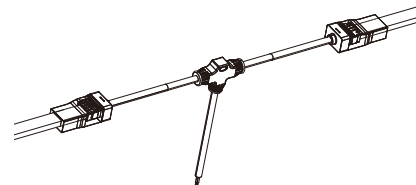
Side Snap Connector, 16'L
 #051606S-CU16



Snap End Cap
 #051686S



Snap Extension
 #051659S

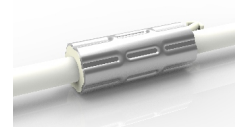


Snap T- Connector
 #051658S

Project
Type
Date

ANTI-WICKING

All connections include a ferrule on the power feed to prevent water wicking through the connection point.



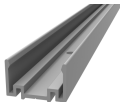
Specifications are correct at the time of publishing, but may be modified or improved in accordance with current electrical, safety or manufacturing methods without notification.

Aqueon® Flat RGB/RGBW Pixel - 24V DC

MOUNTING

PET and Aluminum mounting channels to match any installation.

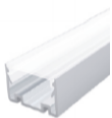
Aluminum Channel



- High-quality Aluminum
- Light-weight
- Cost-Effective

3'3"L - #051694

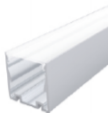
Clear Lensed Channel, 1/2" H



- Light-weight
- Easy to Install & Dismantle
- 1/2" High, 3/4" available
- Clear lens, frosted lens available.

3'3"L - #051695

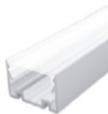
Clear Lensed Channel, 3/4" H



- Light-weight
- Easy to Install & Dismantle
- 3/4" High, 1/2" available
- Clear lens, frosted lens available.

3'3"L - #051696

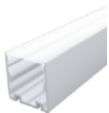
Frosted Lensed Channel, 1/2" H



- Light-weight
- Easy to Install & Dismantle
- 1/2" High, 3/4" available
- Frosted lens, clear lens available.

3'3"L - #051697

Frosted Lensed Channel, 3/4" H



- Light-weight
- Easy to Install & Dismantle
- 1/2" High, 3/4" available
- Clear lens, frosted lens available.

3'3"L - #051698

ORGANIC LIGHTING®

Project

Type

Date



Specifications are correct at the time of publishing, but may be modified or improved in accordance with current electrical, safety or manufacturing methods without notification.