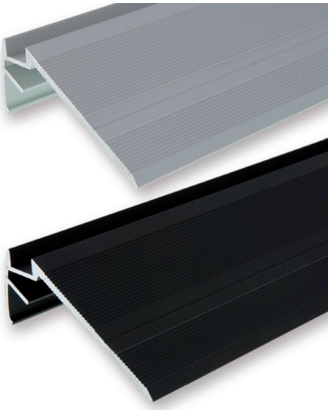
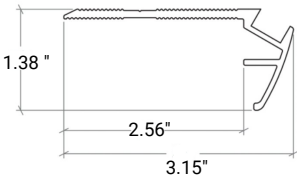


LiniLED® Stair Extrusions

DIRECT STAIR EXTRUSION



- Direct view with angled bullnose edge
- Non-slip tread patterns support liniLED securely into the captive groove
- Aluminum, anodized with non-slip tread patterns
- Silver or Black standard color
- Sold per foot, 6'6" standard lengths



PART NUMBER & SPECIFICATIONS

Stair Direct Extrusion

Part #	Description
011565	Stair Extrusion Direct View, Silver
011567	Stair Extrusion Direct View, Black

Project

Type

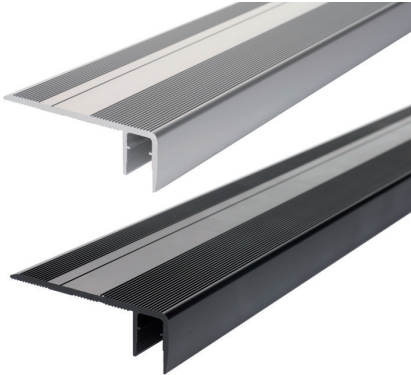
Date

COMPATIBILITY

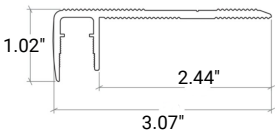
The Direct Stair Extrusion is compatible with liniLED Top emitting.

The Indirect Stair Extrusion is compatible with liniLED Top and Side emitting.

INDIRECT STAIR EXTRUSION



- Indirect bullnose non-slip thread
- Non-slip tread patterns support liniLED securely into the captive groove
- Aluminum, anodized with non-slip tread patterns
- Silver or Black standard color
- Sold per foot, 6'6" standard lengths



PART NUMBER & SPECIFICATIONS

Stair Indirect Extrusion

Part #	Description
011836	Stair Extrusion Indirect View, Silver
011837	Stair Extrusion Indirect View, Black



Specifications are correct at the time of publishing, but may be modified or improved in accordance with current electrical, safety or manufacturing methods without notification.