

Project

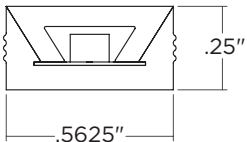
Type

Date



AC LEDstrip

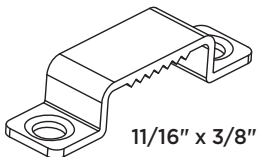
AC LEDstrip
Outdoor / Indoor
120VAC



Mounting Channel
Screw on or adhesive backed



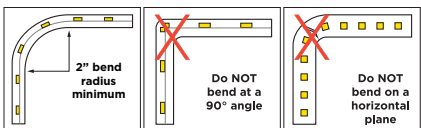
Mounting Bracket



Jumper Cable



S/S Bracket



AC LEDstrip

AC LEDstrip features Driver-less AC LED in runs up to 300ft without an additional power source or driver to conceal. The PVC co-extrusion is UV and chemical resistant and installed in a channel or with mounting clips. Runs of 1-300 ft (ACL-150) and runs of 1-150 ft. (ACL-400) can be specified. Specify run lengths for factory power lead connection and length of connecting cord. Designed and assembled in USA.

Super bright LED fixtures should be aimed away from the casual visual field to avoid glare and visual discomfort.

AC LEDstrip 150 - 215 lm/ft

Color	27k, 30k, 35k, 40k, & 50k
Voltage	120VAC
Lumen/ft	215 lm/ft
Watts/ft	1.5 W/ft
Max Run	up to 300ft runs
CRI	90
Cut Size	Factory cuttable every 12"
Reel Size	150ft
Warranty	5 year/50,000 hour limited warranty
Applications	Building facades; Coves; Perimeter lighting; Path and contour marking
Dimming	Reverse Phase (ELV)
Environment	Dry, damp, or wet locations IP65
Certifications	UL and ETL Listed. Tested in accordance with IESNA LM79 standard

Colored LEDs available.
Red, Green, Blue, Amber.
Custom colors are available on request.

AC LEDstrip 400 - 525 lm/ft

Color	27k, 30k, 35k, 40k, & 50k
Voltage	120VAC
Lumen/ft	525 lm/ft
Watts/ft	4 W/ft
Max Run	up to 150ft runs
CRI	90
Cut Size	Factory cuttable every 12"
Reel Size	150ft
Warranty	5 year/50,000 hour limited warranty
Applications	Building facades; Coves; Perimeter lighting; Path and contour marking
Dimming	Reverse Phase (ELV)
Environment	Dry, damp, or wet locations IP65
Certifications	UL and ETL Listed. Tested in accordance with IESNA LM79 standard

OLS Description

Part #	Description
036000	AC LED 1.5W/ft, 215 lm/ft, 2700k
036002	AC LED 1.5W/ft, 215 lm/ft, 3000k
036004	AC LED 1.5W/ft, 215 lm/ft, 3500k
036006	AC LED 1.5W/ft, 215 lm/ft, 4000k
036008	AC LED 1.5W/ft, 215 lm/ft, 5000k
036020	AC LED 4W/ft, 525 lm/ft, 2700k
036022	AC LED 4W/ft, 525 lm/ft, 3000k
036024	AC LED 4W/ft, 525 lm/ft, 3500k
036026	AC LED 4W/ft, 525 lm/ft, 4000k
036028	AC LED 4W/ft, 525 lm/ft, 5000k

OLS Description

Part #	Description
POWER CORDS	
036050	3' Power cord
036052	6' Power cord
036056	8' Hardwire cable
036058	20' Hardwire cable
ACCESSORIES	
036062	6" Jumper cable
036064	12" Jumper cable
036066	24" Jumper cable
036070	Endcap
036100	39.4" Plastic mounting channel
036110	Mounting U clip hardware
036115	Power pin

Designed and Assembled in USA

Specifications are correct at the time of publishing, but may be modified or improved in accordance with current electrical, safety or manufacturing methods without notification.



Project	Type	Date
---------	------	------

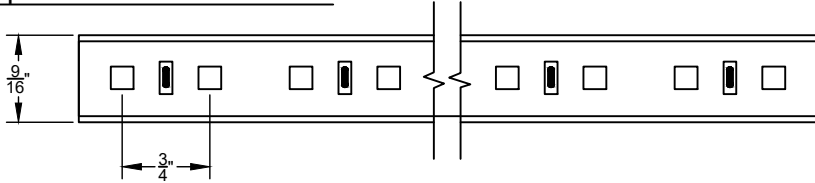


AC LEDstrip
Outdoor / Indoor
120VAC

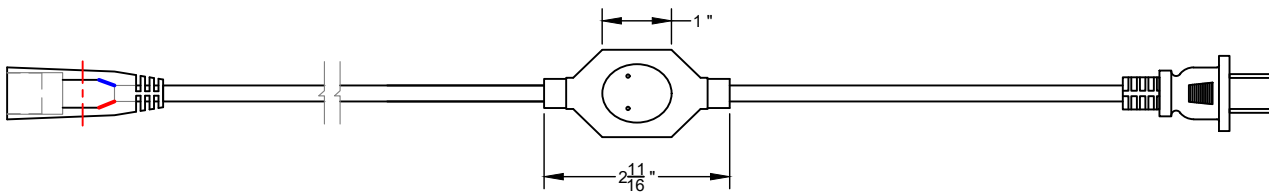


AC LEDstrip

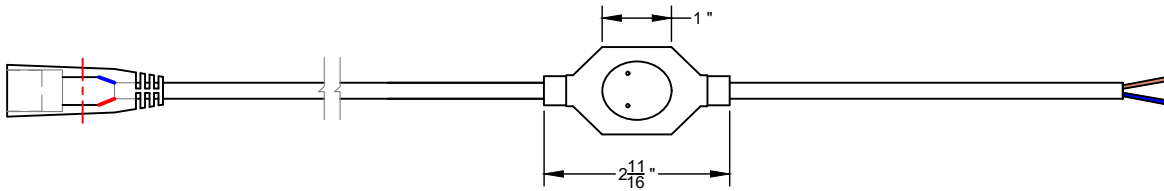
Components with Dimensions



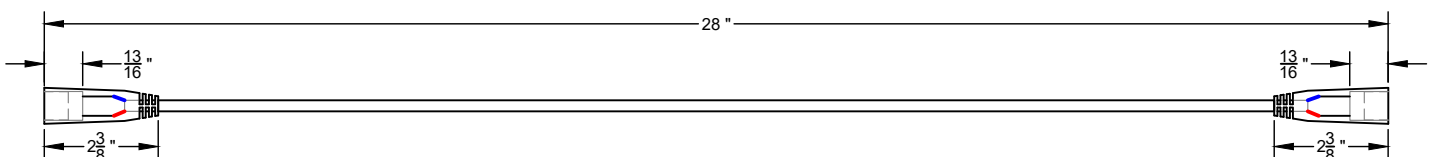
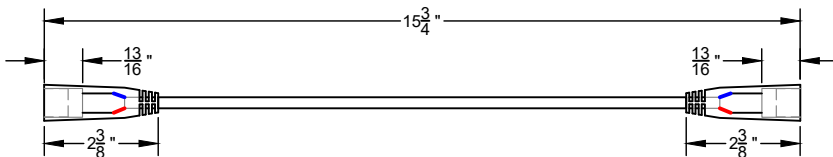
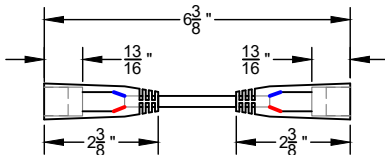
Plug and Play Cable



Hardwire Cable



Jumper Cables



Specifications are correct at the time of publishing, but may be modified or improved in accordance with current electrical, safety or manufacturing methods without notification.