

Project

Type

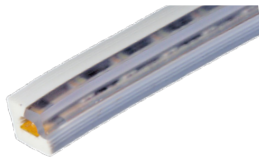
Date

# liniLED® Tunable White - 24V DC

2700K,-6500K



liniLED® Tunable White Top



liniLED® Tunable White Side Bending

- Only 3.2 W/ft.
- Top and Side (asymmetric)
- Hollow chamber extrusion protects phosphors
- Very flexible (bend radius > 1.2")
- Dimmable
- Osram / Nichia LEDs
- Life > 50,000 hours (LM79)
- Professional quality manufacturer
- Made in EU/USA

### liniLED® Tunable White

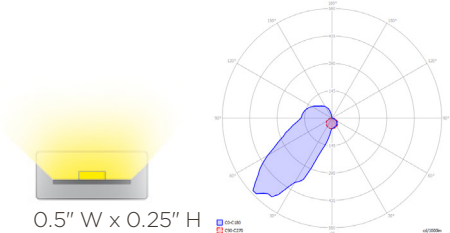
Suitable for exterior or interior, liniLED® Tunable White uses 3.2w per ft. Mount directly with brackets, self-adhesive transparent channels, or aluminum extrusions. liniLED® Top enables vertical bends and liniLED® Side enables horizontal curves for circular coves or columns. Dimmable with 0-10v; wireless Bluetooth; or select direct 120V dimmable drivers. Choose Top bending or Side bending with the built-in reflector to meet the unique requirements of your installation.

Manufactured completely in the US/EU as a single piece very flexible PVC co-extrusion with built-in reflectors to protect the Osram LEDs and electronic circuits, guarantees the quality and phosphor color stability. The unique hollow chamber ensures that there is no pressure on the LEDs, ensuring phosphor color stability and LED lifetime. Field cuttable every 3" for installation in continuous runs up to 29.5ft. Push fit connectors enable easy on-site connection or order as preassembled cut and connected lengths.

### liniLED® Deco Specifications

<b>LED</b>	Osram Duris™ E 3 (Top) or Nichia (Side)
<b>Number of LEDs</b>	12 per section / 20 per ft
<b>LED Tunable White</b>	2700K - 6500K
<b>Beam / Flux</b>	208 lumen/ft
<b>Dimensions</b>	Top: H 0.25" x W 0.50" Side: H 0.50" x W 0.50"
<b>Length</b>	Up to 29.5 ft continuous runs; field cuttable every 3"; 29.5 ft reels
<b>Bend Radius</b>	1.2"
<b>Indoor or Outdoor</b>	IP40; IP67 Wet location (specify protected IP67 connectors) or IP68 with Mirror welded connectors
<b>Watts and Voltage</b>	24VDC; 3.2 W/ft; ETL / CE
<b>Material</b>	UV/IR protected PVC encapsulation
<b>Dimmable</b>	Pulse Width Modulation, or 0-10V; or 120V-277V
<b>Life</b>	50,000 hours white; Up to 60,000 hours for colors (mfc. data at 104°F) LM-79, 5 year limited warranty
<b>24VDC</b>	Select appropriate wattage power supplies, according to run length and number of runs
<b>Accessories</b>	Mount directly with brackets, self-adhesive transparent channels, or in our aluminum extrusions and select Power supplies from our extensive range. Organic Lighting provides a full range of accessories for mounting, powering, and controlling.

OLS Part # Top	OLS Part # Side	Color	Max length	LEDs/ft	V/DC	Current (A)	CRI	lm/ft	W/ft	Bin
011992	011993	2700K- 6500K	29.5 ft.	20	24	350mA	> 80	208	3.2	±50



### Accessories and Extrusions



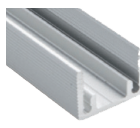
PET Channel #011369



Angled Channel #011367



SS Clips #011378



Aluminum Channel #012851



Top Connector #011201



Side Connector #011203

Specifications are correct at the time of publishing, but may be modified or improved in accordance with current electrical, safety or manufacturing methods without notification.



## Cable selection LiniLED Tunable White

The liniLED® LED strips need a minimum voltage at the beginning of the LED strip to function according to the specifications. The table below gives an indication of the maximum cable length based on the cable thickness and power supply voltage. The connection between the cable and LED strip is with a liniLED® Connector.

In case the required length is larger than the length mentioned in this table, the supply voltage is different or if a detailed wire plan with branches is planned, please contact your distributor for a detailed cable calculation.

Cable X information	LED strip	Max. cable length 2000, 2400K		Max. cable length 2700, 3000K		Max. cable length 4000, 6500K	
		@ 24 V DC	@ 25V DC	@ 24 V DC	@ 25V DC	@ 24 V DC	@ 25V DC
<b>20 AWG x 2</b>	3.28 ft	91 ft	179 ft	116 ft	215 ft	121 ft	236 ft
	6.56 ft	43 ft	87 ft	52 ft	105 ft	58 ft	116 ft
	16.4 ft	14 ft	32 ft	18 ft	39 ft	20 ft	43 ft
	29.52 ft	6 ft	16 ft	8 ft	20 ft	9 ft	22 ft
<b>18 AWG x 2</b>	3.28 ft	137 ft	270 ft	165 ft	323 ft	182 ft	356 ft
	6.56 ft	65 ft	132 ft	27 ft	158 ft	88 ft	174 ft
	16.4 ft	22 ft	49 ft	28 ft	59 ft	91 ft	66 ft
	29.52 ft	9 ft	24 ft	12 ft	30 ft	14 ft	33 ft
<b>17 AWG x 2</b>	3.28 ft	183 ft	359 ft	218 ft	430 ft	242 ft	473 ft
	6.56 ft	87 ft	175 ft	105 ft	210 ft	117 ft	232 ft
	16.4 ft	29 ft	65 ft	37 ft	79 ft	41 ft	89 ft
	29.52 ft	12 ft	32 ft	55 ft	40 ft	19 ft	45 ft
<b>16 AWG x 2</b>	3.28 ft	275 ft	541 ft	330 ft	647 ft	364 ft	712 ft
	6.56 ft	131 ft	264 ft	162 ft	317 ft	176 ft	349 ft
	16.4 ft	45 ft	98 ft	56 ft	119 ft	62 ft	132 ft
	29.52 ft	19 ft	48 ft	25 ft	60ft	29 ft	67 ft
<b>14 AWG x 2</b>	3.28 ft	459 ft	900 ft	550 ft	1076 ft	607 ft	1185 ft
	6.56 ft	218 ft	439 ft	264 ft	527 ft	293 ft	582 ft
	16.4 ft	74 ft	163 ft	93 ft	198 ft	104 ft	220 ft
	29.52 ft	32 ft	81 ft	42 ft	100 ft	48 ft	112 ft

