

Project

Type

Date

liniLED® RGB - 24V DC

2400K, 2700K, 3000K, 4000K, 6500K



liniLED® RGB Top



liniLED® RGB Side Bending

- Only 1.5 - 2.2 W/ft.
- Top and Side (asymmetric)
- Hollow chamber extrusion protects phosphors
- Very flexible (bend radius > 1.2")
- Dimmable
- Osram LEDs
- Life > 50,000 hours (LM79)
- Professional quality manufacturer
- Made in EU/USA

liniLED® LED Strip RGB 160/240

Suitable for exterior or interior, liniLED® RGB 160 uses 1.5W & RGB 240 uses 2.2W per ft. Mount directly with brackets, self-adhesive transparent channels, or aluminum extrusions. liniLED® Top enables vertical bends and liniLED® Side enables horizontal curves for circular coves or columns. Dimmable with 0-10v; wireless Bluetooth; or select direct 120V dimmable drivers. Choose Top bending or Side bending with the built-in reflector to meet the unique requirements of your installation.

A single piece very flexible PVC co-extrusion with built-in reflectors protects the LEDs and electronic circuits, and a unique hollow chamber ensures that there is no pressure on the LEDs, ensuring phosphor color stability. Field cuttable every 7.87" for installation in continuous runs up to 32.5ft. (RGB 160) or 16ft (RGB 240) with push-fit connectors.

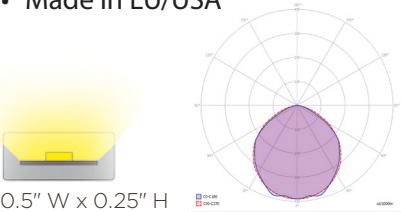
Manufactured completely in the US/EU as a single piece PVC co-extrusion with built-in reflectors to protect the high-quality Osram LEDs and electronic circuits guarantees the quality, phosphor color stability and LED lifetime. Push fit connectors enable easy on-site connection or order as preassembled cut and connected lengths.

liniLED® LED Strip RGB 160/240 Specifications

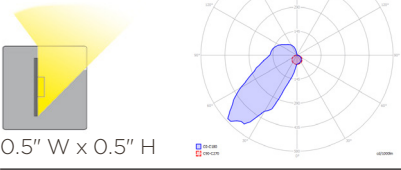
LED	MULTILED
Number of LEDs	7 per section / 11 per foot
LEDs	RGB
Light output	42 lm/ft (Top 160); 64 lm/ft (Top 240); 30 lm/ft (Side 160); 51 lm/ft (Side 240)
LED efficiency	29 lm/W
Beam angle	110°
Dimensions	Top: H 0.25" x W 0.50" Side: H 0.50" x W 0.50"
Section Length	Every 7.9"
Max. connection length	Up to 32.5 ft (160) or 16 ft (240)
Outdoor or Indoor	IP40; IP67 Wet location (specify protected IP67 connectors) or IP68 with Mirror welded connections
Bend Radius	1.2"
24V DC	1.5 - 2.2 W/ft - select appropriate wattage power supplies according to run length and number of runs
Material	PVC
Life	B50/L70
Warranty	5 years or >50,000 hours
Weight	0.75 oz per foot (Top); 1.6 oz per foot (Side)
Accessories	Mount directly with brackets, self-adhesive transparent channels, or in our aluminum extrusions and select Power supplies from our extensive range. Organic Lighting provides a full range of accessories for mounting, powering, and controlling.

Product - Top	OLS Part #	Color	Max length	LEDs/ft	V/DC	Current (A)	CRI	lm/ft	W/ft	Bin
RGB 160	011602	RGB	32.5 ft.	11	24	350mA	> 80	42	1.5	±50
RGB 240	011597	RGB	16 ft.	11	24	350mA	> 80	64	2.2	±50

Product - Side	OLS Part #	Color	Max length	LEDs/ft	V/DC	Current (A)	CRI	lm/ft	W/ft	Bin
RGB 160	011760	RGB	32.5 ft.	11	24	350mA	> 80	30	1.5	±50
RGB 240	011869	RGB	16 ft.	11	24	350mA	> 80	51	2.2	±50



0.5" W x 0.25" H

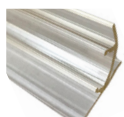


0.5" W x 0.5" H

Accessories and Extrusions



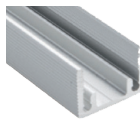
PET Channel #011369



Angled Channel #011367



SS Clips #011378



Aluminum Channel #012851



Top Connector #011205



Side Connector #011207

Specifications are correct at the time of publishing, but may be modified or improved in accordance with current electrical, safety or manufacturing methods without notification.



Wire selection LiniLED RGB 160

The liniLED® LED strips need a minimum voltage at the beginning of the LED strip to function according to the specifications. The table below gives an indication of the maximum cable length based on the cable thickness and power supply voltage. The connection between the cable and LED strip is with a liniLED® Connector.

In case the required length is larger than the length mentioned in this table, the supply voltage is different or if a detailed wire plan with branches is planned, please contact your distributor for a detailed cable calculation.

Cable X information	LED strip	Max. cable length		Cable X information	LED strip	Max. cable length	
		@ 24 V DC	@ 25V DC			@ 24 V DC	@ 25V DC
20 AWG x 4	3.28 ft	206 ft	399 ft	20 AWG x 5	3.28 ft	682 ft	1318 ft
	6.50 ft	101 ft	187 ft		6.50 ft	334 ft	654 ft
	16.4 ft	038 ft	076 ft		16.4 ft	126 ft	253 ft
	33.0 ft	017 ft	036 ft		33.0 ft	056 ft	120 ft
18 AWG x 4	3.28 ft	331 ft	855 ft	17 AWG x 5	3.28 ft	906 ft	1757 ft
	6.50 ft	141 ft	279 ft		6.50 ft	444 ft	870 ft
	16.4 ft	81 ft	164 ft		16.4 ft	167 ft	337 ft
	33.0 ft	36 ft	78 ft		33.0 ft	75 ft	160 ft
17 AWG x 4	3.28 ft	586 ft	1136 ft	16 AWG x 5	3.28 ft	1364 ft	2643 ft
	6.50 ft	287 ft	562 ft		6.50 ft	669 ft	1308 ft
	16.4 ft	108 ft	218 ft		16.4 ft	252 ft	507 ft
	33.0 ft	48 ft	103 ft		33.0 ft	113 ft	240 ft
16 AWG x 4	3.28 ft	882 ft	1710 ft	14 AWG x 5	3.28 ft	692.14 m	4398 ft
	6.50 ft	433 ft	846 ft		6.50 ft	1113 ft	2177 ft
	16.4 ft	163 ft	328 ft		16.4 ft	419 ft	845 ft
	33.0 ft	73 ft	156 ft		33.0 ft	188 ft	400 ft
14 AWG x 4	3.28 ft	1469 ft	2846 ft				
	6.50 ft	720 ft	1409 ft				
	16.4 ft	271 ft	546 ft				
	33.0 ft	121 ft	259 ft				

