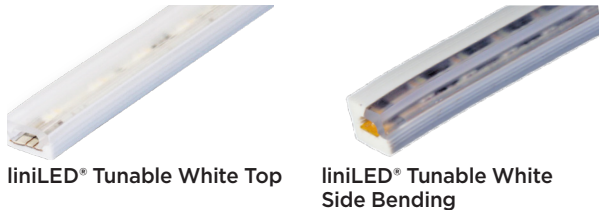


Project	Type	Date
---------	------	------

# liniLED® Tunable White - 24V DC

2700K, 3000K, 4000K, 6500K

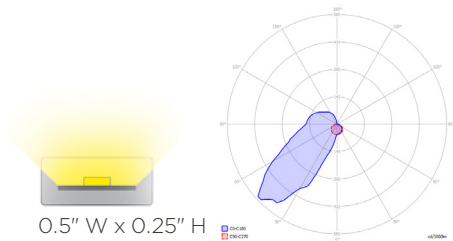


- Only 3.2 W/ft.
- Top and Side (asymmetric)
- Hollow chamber extrusion protects phosphors
- Very flexible (bend radius >1.2")
- Dimmable
- Osram / Nichia LEDs
- Live >50,000 hours (LM79)
- Professional quality manufacture
- Made in EU/USA

## liniLED® Tunable White

Suitable for exterior or interior, liniLED® Tunable White uses 3.2w per ft. Mount directly with brackets, self-adhesive transparent channels, or aluminum extrusions. liniLED® Top enables vertical bends and liniLED® Side enables horizontal curves for circular coves or columns. Dimmable with 0-10v; wireless Bluetooth; or select direct 120V dimmable drivers. Choose Top bending or Side bending with the built-in reflector to meet the unique requirements of your installation.

Manufactured completely in the US/EU as a single piece very flexible PVC co-extrusion with built-in reflectors to protect the Osram LEDs and electronic circuits, guarantees the quality and phosphor color stability. The unique hollow chamber ensures that there is no pressure on the LEDs, ensuring phosphor color stability and LED lifetime. Field cuttable every 3" for installation in continuous runs up to 29.5ft. Push fit connectors enable easy on-site connection or order as preassembled cut and connected lengths.



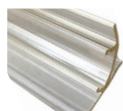
## liniLED® Deco Specifications

<b>LED</b>	Osram Duris™ E 3 (Top) or Nichia (Side)
<b>Number of LEDs</b>	12 per section / 20 per ft
<b>LED Tunable White</b>	2700K / 3000K / 4000K / 6500K
<b>Beam / Flux</b>	208 lumen/ft
<b>Dimensions</b>	Top: H 0.25" x W 0.50" Side: H 0.50" x W 0.50"
<b>Length</b>	Up to 29.5 ft continuous runs; field cuttable every 3"; 29.5 ft reels
<b>Bend Radius</b>	1.2"
<b>Indoor or Outdoor</b>	IP40; IP67 Wet location (specify protected IP67 connectors) or IP68 with Mirror welded connectors
<b>Watts and Voltage</b>	24VDC; 3.2 W/ft; ETL / CE
<b>Material</b>	UV/IR protected PVC encapsulation
<b>Dimmable</b>	Pulse Width Modulation, or 0-10V; or 120V-277V
<b>Life</b>	50,000 hours white; Up to 60,000 hours for colors (mfc. data at 104°F) LM-79, 5 year limited warranty
<b>24VDC</b>	Select appropriate wattage power supplies, according to run length and number of runs
<b>Accessories</b>	Mount directly with brackets, self-adhesive transparent channels, or in our aluminum extrusions and select Power supplies from our extensive range. Organic Lighting provides a full range of accessories for mounting, powering, and controlling.

## Accessories and Extrusions



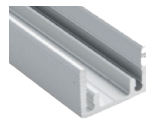
PET Channel #011369



Angled Channel #011367



SS Clips #011378



Aluminum Channel #012851



Top Connector #011201



Side Connector #011203

OLS Part # Top	OLS Part # Side	Color	Max length	LEDs/ft	V/DC	Current (A)	CRI	lm/ft	W/ft	Bin
011992	011993	2700K-6500K	29.5 ft.	20	24	350mA	> 80	208	3.2	±50

Specifications are correct at the time of publishing, but may be modified or improved in accordance with current electrical, safety or manufacturing methods without notification.

