

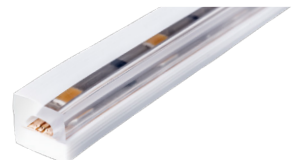
Project

Type

Date



liniLED® Power Top



liniLED® Power Side Bending

liniLED® Power - 24V DC

2400K, 2700K, 3000K, 4000K, 6500K
Amber, Red, Green, Blue, Orange

- Only 1.24-1.4 W/ft.
- Top and Side (asymmetric)
- Hollow chamber extrusion protects phosphors
- Very flexible (bend radius >1.2")
- Dimmable
- Osram LEDs
- Live >50,000 hours (LM79)
- Professional quality manufacture
- Made in EU/USA

liniLED® Power

Power is the perfect choice for large coves and washing ceilings in large commercial spaces and retail interiors, combining the best in performance and energy efficiency. Suitable for exterior or interior, liniLED® Power is the most energy efficient LED strip on the market, at only 1.3w per ft, which reduces the number of drivers required and cost of installation. Dimmable with 0-10v; wireless Bluetooth; or select direct 120V-277V dimmable drivers. Choose Top bending or Side bending with the built-in reflector to meet the unique requirements of your installation.

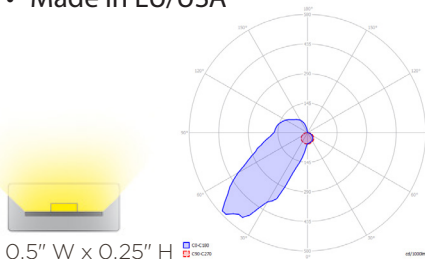
Manufactured completely in the US/EU as a single piece PVC co-extrusion with built-in reflectors to protect the high-quality Osram LEDs and electronic circuits guarantees the quality, phosphor color stability and LED lifetime. Push fit connectors enable easy on-site connection or order as preassembled cut and connected lengths. Designed for installation in continuous runs up to 33ft long. liniLED Power is the first choice for the liniLED Illuminated Handrail system.

liniLED® Power Specifications

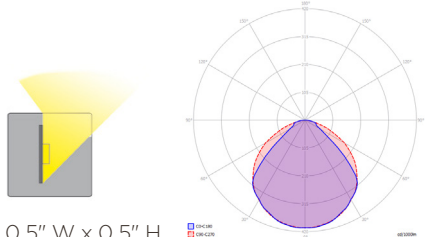
LED	Osram Duris™ E 5 / Color: TopLED® long life
Number of LEDs	White: 7 per section / 11 per foot Colors: 5 per section / 15 per foot
LED White	White: 2400K / 2700K / 3000K / 4000K / 6500K
LED Mono Colors	Mono: Red / Green / Blue / Amber / Orange
Beam / Flux	White: 127 lumen/ft (Top) 110°, 104.57 lumen/ft (Side) 55° Color (see charts below)
Dimensions	Top: H 0.25" x W 0.50" Side: H 0.50" x W 0.50"
Length	Up to 33ft continuous runs; field cuttable every 8" for white; 4" for colors; 164 ft. reel for white, 33ft reel for colors
Bend Radius	1.2"
Indoor or Outdoor	IP40; IP67 Wet location (specify protected IP67 connectors) or IP68 with Mirror welded connections
Watts and Voltage	24VDC; White: 1.25-1.4 W/ft; Color (see below) ETL/CE
Material	UV/IR protected PVC encapsulation
Dimmable	Pulse Width Modulation, maintains consistent lumen output and color
Life	50,000 hours white (mfc. data at 77°F); Up to 100,000 hours for colors LM-79, 5 year limited warranty
24VDC	Select appropriate wattage power supplies, according to run length and number of runs
Accessories	Mount directly with brackets, self-adhesive transparent channels, or in our aluminum extrusions and select Power supplies from our extensive range. Organic Lighting provides a full range of accessories for mounting, powering, and controlling.

OLS Part # Top	Color	Max length	LEDs/ft	V/DC	Current (A)	CRI	lm/ft	W/ft	Bin
011857	2400K	8 in - 33 ft.	11	24	350mA	> 80	127	1.37	±50
011598	2700K	8 in - 33 ft.	11	24	350mA	> 80	127	1.4	±50
011600	3000K	8 in - 33 ft.	11	24	350mA	> 80	127	1.3	±50
011599	4000K	8 in - 33 ft.	11	24	350mA	> 80	127	1.3	±50
011609	6500K	8 in - 33 ft.	11	24	350mA	> 80	127	1.28	±50
011863	Amber	4 in - 33 ft.	15	24	350mA		28.6	2.53	
011860	Red	4 in - 33 ft.	15	24	350mA		31.09	2.53	
011862	Green	4 in - 33 ft.	15	24	350mA		46.65	1.49	
011861	Blue	4 in - 33 ft.	15	24	350mA		20.73	2.2	
011864	Orange	4 in - 33 ft.	15	24	350mA			2.53	

OLS Part # Side	Color	Max length	LEDs/ft	V/DC	Current (A)	CRI	lm/ft	W/ft	Bin
011876	2400K	8 in - 33 ft.	11	24	350mA	> 80	104.57	1.37	Fine
011739	2700K	8 in - 33 ft.	11	24	350mA	> 80	104.57	1.40	Fine
011741	3000K	8 in - 33 ft.	11	24	350mA	> 80	104.57	1.31	Fine
011743	4000K	8 in - 33 ft.	11	24	350mA	> 80	104.57	1.25	Fine
011742	6500K	8 in - 33 ft.	11	24	350mA	> 80	104.57	1.25	Fine
011873	Amber	4 in - 33 ft.	15	24	350mA		70	2.53	
011870	Red	4 in - 33 ft.	15	24	350mA		70	2.53	
011872	Green	4 in - 33 ft.	15	24	350mA		61	1.49	
011871	Blue	4 in - 33 ft.	15	24	350mA		26	2.2	
011874	Orange	4 in - 33 ft.	15	24	350mA		70	2.53	



0.5" W x 0.25" H



0.5" W x 0.5" H

Accessories and Extrusions



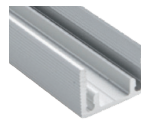
PET Channel #011369



Angled Channel #011367



SS Clips #011378



Aluminum Channel #012851



Top Connector #011201



Side Connector #011203

*Factory IP67 Connectors add part #011508

Specifications are correct at the time of publishing, but may be modified or improved in accordance with current electrical, safety or manufacturing methods without notification.

