

Project

Type

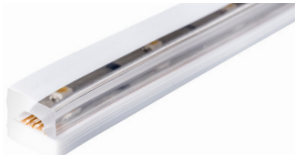
Date

liniLED® Photon - 24V DC

2400K, 2700K, 3000K, 4000K, 6500K



liniLED® Photon Top



liniLED® Photon Side Bending

- Only 2.7 W/ft.
- Top and Side (asymmetric)
- Hollow chamber extrusion protects phosphors
- Very flexible (bend radius >1.2")
- Dimmable
- Osram LEDs
- Live >50,000 hours (LM79)
- Professional quality manufacture
- Made in EU/USA

liniLED® Photon

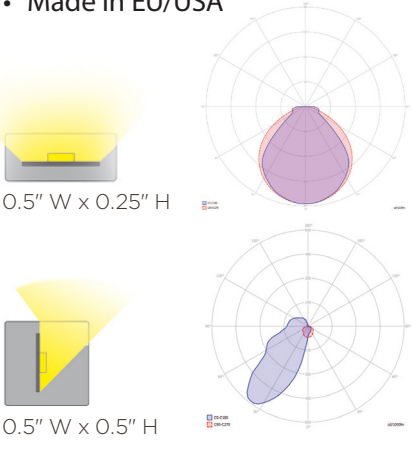
Suitable for exterior or interior, liniLED® Photon uses 2.7W per ft. Mount directly with brackets, self-adhesive transparent channels, or aluminum extrusions. liniLED® Top enables vertical bends and liniLED® Side enables horizontal curves for circular coves or columns. Dimmable with 0-10V; wireless Bluetooth; or select direct 120V-277V dimmable drivers. Choose Top bending or Side bending with the built-in reflector to meet the unique requirements of your installation.

A single piece very flexible PVC co-extrusion with built-in reflectors protects the LEDs and electronic circuits, and a unique hollow chamber ensures that there is no pressure on the LEDs, ensuring phosphor color stability. Field cuttable every 8" for installation in continuous runs up to 66ft. with push-fit connectors.

Manufactured completely in the US/EU as a single piece PVC co-extrusion with built-in reflectors to protect the LEDs and electronic circuits guarantees the quality, phosphor color stability and LED lifetime. Push fit connectors enable easy on-site connection or order as preassembled cut and connected lengths.

liniLED® Photon Specifications

| | |
|-------------------|--|
| LED | Nichia |
| Number of LEDs | 7 per section / 21 per foot |
| LED Mono Colors | 2000K, 2400K, 2700K, 3000K, 4000K, 6500K |
| Beam / Flux | 110° (Top); White: 312 lumen/ft.; 55° (Side): White: 212.4-254.8 lm/ft |
| Dimensions | Top: H 0.25" x W 0.50" Side: H 0.50" x W 0.50" |
| Length | Up to 29.5ft continuous runs, field cuttable every 4"; 33' reels |
| Bend Radius | 1.2" |
| Indoor or Outdoor | IP40; IP67 Wet location (specify protected IP67 connectors) or IP68 with Mirror welded connectors |
| Watts and Voltage | 24VDC; 1 W/ft. (Top) or 302 W/ft. (Side); ETL / CE |
| Material | UV/IR protected PVC encapsulation |
| Dimmable | Pulse Width Modulation, or 0-10V; or 120V Electronic with special power supply |
| Life | 50,000 hours white (mfc. data at 104°F) LM-79, 5 year limited warranty |
| 24VDC | Select appropriate wattage power supplies, according to run length and number of runs |
| Accessories | Mount directly with brackets, self-adhesive transparent channels, or in our aluminum extrusions and select Power supplies from our extensive range. Organic Lighting provides a full range of accessories for mounting, powering, and controlling. |



Accessories and Extrusions



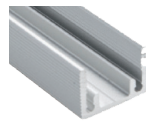
PET Channel #011369



Angled Channel #011367



SS Clips #011378



Aluminum Channel #012851



Top Connector #011201



Side Connector #011203

| OLS Part # | Color | Max length | LEDs/ft | V/DC | Current (A) | CRI | lm/ft | W/ft | Bin |
|------------|-------|------------|---------|------|-------------|-----|-------|------|-----|
| 011980 | 2000K | 29.5 ft. | 11 | 24 | 350mA | 90 | 247.2 | 3.2 | ±50 |
| 011981 | 2400K | 29.5 ft. | 11 | 24 | 350mA | 90 | 292 | 3.2 | ±50 |
| 011982 | 2700K | 29.5 ft. | 11 | 24 | 350mA | 90 | 303.9 | 2.7 | ±50 |
| 011983 | 3000K | 29.5 ft. | 11 | 24 | 350mA | 90 | 311.8 | 2.7 | ±50 |
| 011984 | 4000K | 29.5 ft. | 11 | 24 | 350mA | 90 | 307.2 | 2.5 | ±50 |
| 011985 | 6500K | 29.5 ft. | 11 | 24 | 350mA | 90 | 305.7 | 2.5 | ±50 |
| 011986 | 2000K | 29.5 ft. | 21 | 24 | 350mA | 90 | 212.4 | 3.2 | ±50 |
| 011987 | 2400K | 29.5 ft. | 21 | 24 | 350mA | 90 | 243.5 | 3.2 | ±50 |
| 011988 | 2700K | 29.5 ft. | 21 | 24 | 350mA | 90 | 252.1 | 2.7 | ±50 |
| 011989 | 3000K | 29.5 ft. | 21 | 24 | 350mA | 90 | 254.8 | 2.7 | ±50 |
| 011990 | 4000K | 29.5 ft. | 21 | 24 | 350mA | 90 | 253.3 | 2.5 | ±50 |
| 011991 | 6500K | 29.5 ft. | 21 | 24 | 350mA | 90 | 253 | 2.5 | ±50 |

Specifications are correct at the time of publishing, but may be modified or improved in accordance with current electrical, safety or manufacturing methods without notification.

