

Project

Type

Date

liniLED® PCB - 24V DC

2400K, 2700K, 3000K, 4000K, 6500K
RGB, Amber, Red, Green, Blue



liniLED® PCB

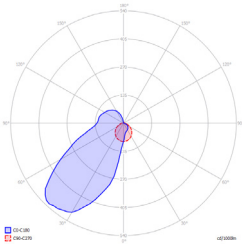
- Only 0.33 W/ft.
- Top and Side (asymmetric)
- Hollow chamber extrusion protects phosphors
- Very flexible (bend radius >1.2")
- Dimmable
- Osram LEDs
- Live >50,000 hours (LM79)
- Professional quality manufacture
- Made in EU/USA



0.5" W x 0.25" H



0.5" W x 0.5" H



liniLED® PCB

The liniLED® PCB LED strip (IP20) is a flexible LED strip equipped with 3M double sided tape **without** the unique co-extrusion technology. The liniLED® PCB LED strip is ideal to use in small indoor spaces (indoor use only!). Available in various luminous intensities and colors.

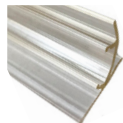
liniLED® PCB Specifications

LED	Osram Duris™ E 5 / RGB: MultiLED / Color: TopLED® long life
Number of LEDs	11/ft, 166 ft long reels
LEDs	2400K / 2700K / 3000K / 4000K / 6500K
LED Mono Color	Red / Green / Blue / Amber / Orange
Beam / Flux	White: 24.08-23.35 lumen/ft RGB and Color (see chart below)
Dimensions	Top: H 0.25" x W 0.50" Side: H 0.50" x W 0.50"
Length	Up to 66 ft continuous runs; field cuttable every 8"; 164 ft reel
Bend Radius	1.2"
Indoor or Outdoor	IP40; IP67 Wet location (specify protected IP67 connectors) or IP68 with Morror welded connectors
Watts and Voltage	24VDC; .33 W/ft; RGB and Colors (see chart below); ETL / CE
Material	UV/IR protected PVC encapsulation
Dimmable	Pulse Width Modulation, or 0-10V; or 120V Electronic with special power supply
Life	50,000 hours white; Up to 100,000 hours for colors (mfc. data at 104°F) LM-79, 5 year limited warranty
24VDC	Select appropriate wattage power supplies, according to run length and number of runs
Accessories	Mount directly with brackets, self-adhesive transparent channels, or in our aluminum extrusions and select Power supplies from our extensive range. Organic Lighting provides a full range of accessories for mounting, powering, and controlling.

Accessories and Extrusions



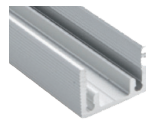
PET Channel #011369



Angled Channel #011367



SS Clips #011378



Aluminum Channel #012851



Top Connector #011201



Side Connector #011203

OLS Part # Top	OLS Part # Side	Color	Max length	LEDs/ft	V/DC	Current (A)	CRI	lm/ft	W/ft	Bin
011856	011875	2400K	66 ft.	11	24	350mA	> 80	24.08	0.33	±50
011859	011878	2700K	66 ft.	11	24	350mA	> 80	25.91	0.33	±50
011601	011766	3000K	66 ft.	11	24	350mA	> 80	25.91	0.33	±50
011608	011740	4000K	66 ft.	11	24	350mA	> 80	28.35	0.33	±50
011607	011765	6500K	66 ft.	11	24	350mA	> 80	28.35	0.33	±50
011602	011760	RGB	33 ft.	11	24	350mA		44	2.12	
011603	011761	Amber	66 ft.	11	24	350mA		11.89	1.34	
011604	011762	Red	66 ft.	11	24	350mA		14.02	1.34	
011605	011763	Green	66 ft.	11	24	350mA		26.82	0.76	
011606	011764	Blue	66 ft.	11	24	350mA		5.79	0.51	

Specifications are correct at the time of publishing, but may be modified or improved in accordance with current electrical, safety or manufacturing methods without notification.

