

Project	Type	Date
---------	------	------

**liniLED<sup>®</sup> High Power - 24V DC**  
2400K, 2700K, 3000K, 4000K, 6500K



liniLED<sup>®</sup> High Power Top



liniLED<sup>®</sup> High Power Side Bending

- Less than 3 W/ft.
- Top and Side (asymmetric)
- Hollow chamber extrusion protects phosphors
- Very flexible (bend radius >1.2")
- Dimmable
- Osram LEDs
- Live >50,000 hours (LM79)
- Professional quality manufacture
- Made in EU/USA

**liniLED<sup>®</sup> High Power**

With more output than a traditional T5 lamp, using 60% less energy, and field cuttable in 2" sections, liniLED<sup>®</sup> High Power is designed for installation in continuous runs up to 33ft long and can replace any conventional cove lit application with continuous shadow-free runs. These tiny high output LEDs are perfect for indirectly illuminated scenes where very high brightness is required and for diffused direct viewing applications for LED dot-free lighting with very low-profile channels. Dimmable with 0-10v; wireless Bluetooth; or select direct 120V-120V dimmable drivers. Choose Top bending or Side bending.

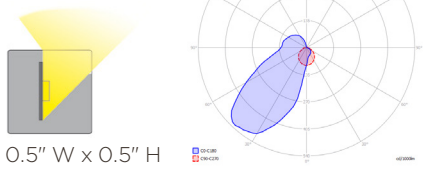
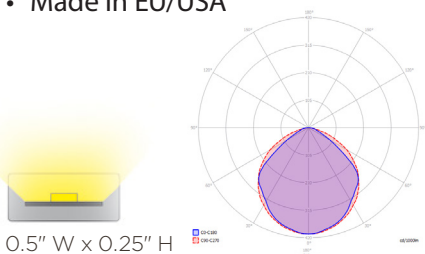
Manufactured completely in the US/EU as a single piece PVC co-extrusion with built-in reflectors to protect the Osram LEDs and electronic circuits guarantees the quality, phosphor color stability and LED lifetime. Push fit connectors enable easy on-site connection or order as preassembled cut and connected lengths.

**liniLED<sup>®</sup> High Power Specifications**

<b>LED</b>	Osram Duris™ E 3
<b>Number of LEDs</b>	3 per inch / 37 per foot
<b>LED White</b>	White: 2400K / 2700K / 3000K / 4000K / 6500K; CRI >85
<b>Beam / Flux</b>	Cold and Natural White - 257.9 lumens/ft 110° (Top); 55° (Side) Warm White - 237.8 lumens/ft
<b>Dimensions</b>	Top: H 0.25" x W 0.50" Side: H 0.50" x W 0.50"
<b>Length</b>	Up to 33ft continuous runs; field cuttable every 2"; 33 ft. reel
<b>Bend Radius</b>	1.2"
<b>Indoor or Outdoor</b>	IP40; IP67 Wet location (specify protected IP67 connectors) or IP68 with Mirror welded connections
<b>Watts and Voltage</b>	24VDC; 3 W/ft.; ETL / CE
<b>Material</b>	UV/IR protected PVC encapsulation; resistant to salt water, chlorine & solvents
<b>Dimmable</b>	1-10V; Pulse Width Modulation, DMX 2 wire low voltage (Magnetic power supplies)
<b>Life</b>	50,000 hours white; Up to 100,000 hours for colors (mfc.data at 104°F) 5 year limited warranty
<b>24VDC</b>	Select appropriate wattage power supplies, according to run length and number of runs
<b>Accessories</b>	Mount directly with brackets, self-adhesive transparent channels, or in our aluminum extrusions and select Power supplies from our extensive range. Organic Lighting provides a full range of accessories for mounting, powering, and controlling.

OLS Part #	Color	Max length	LEDs/ft	V/DC	Current (A)	CRI	lm/ft	W/ft	Bin
<b>011858</b>	2400K	2" - 33 ft.	37	24	0.28	> 80	237.8	2.77	±50
<b>011731</b>	2700K	2" - 33 ft.	37	24	0.28	> 80	237.8	2.92	±50
<b>011732</b>	3000K	2" - 33 ft.	37	24	0.28	> 80	237.8	2.74	±50
<b>011733</b>	4000K	2" - 33 ft.	37	24	0.28	> 80	257.9	2.74	±50
<b>011734</b>	6500K	2" - 33 ft.	37	24	0.28	> 80	257.9	2.74	±50

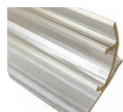
OLS Part #	Color	Max length	LEDs/ft	V/DC	Current (A)	CRI	lm/ft	W/ft	Bin
<b>011877</b>	2400K	2" - 33 ft.	37	24	0.28	85-90	194.5	2.89	Fine <3mcd
<b>011735</b>	2700K	2" - 33 ft.	37	24	0.28	85-90	194.5	2.89	Fine <3mcd
<b>011736</b>	3000K	2" - 33 ft.	37	24	0.28	85-90	194.5	2.89	Fine <3mcd
<b>011737</b>	4000K	2" - 33 ft.	37	24	0.28	85-90	210	2.89	Fine <3mcd
<b>011738</b>	6500K	2" - 33 ft.	37	24	0.28	85-90	210	2.89	Fine <3mcd



**Accessories and Extrusions**



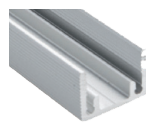
PET Channel #011369



Angled Channel #011367



SS Clips #011378



Aluminum Channel #012851



Top Connector #011201



Side Connector #011203

Specifications are correct at the time of publishing, but may be modified or improved in accordance with current electrical, safety or manufacturing methods without notification.

