

Project	Type	Date
---------	------	------

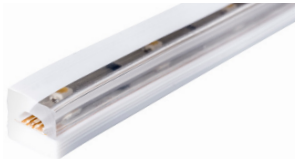
**liniLED<sup>®</sup> Deco - 24V DC**

2400K, 2700K, 3000K, 4000K, 6500K

RGB, Amber, Red, Green, Blue



liniLED<sup>®</sup> Deco Top



liniLED<sup>®</sup> Deco Side Bending

- Only 0.30 W/ft.
- Top and Side (asymmetric)
- Hollow chamber extrusion protects phosphors
- Very flexible (bend radius >1.2")
- Dimmable
- Osram LEDs
- Live >50,000 hours (LM79)
- Professional quality manufacture
- Made in EU/USA

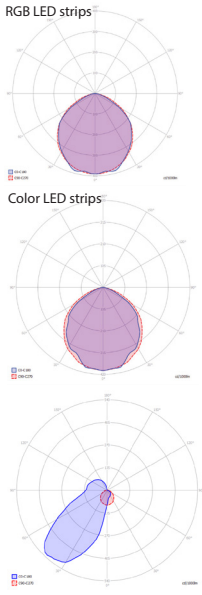
**liniLED<sup>®</sup> Deco**

Suitable for exterior or interior, liniLED<sup>®</sup> Deco uses 0.30W per ft. Mount directly with brackets, self-adhesive transparent channels, or aluminum extrusions. liniLED<sup>®</sup> Top enables vertical bends and liniLED<sup>®</sup> Side enables horizontal curves for circular coves or columns. Dimmable with 0-10v; wireless Bluetooth; or select direct 120V-277V dimmable drivers. Choose Top bending or Side bending with the built-in reflector to meet the unique requirements of your installation.

Manufactured completely in the US/EU as a single piece very flexible PVC co-extrusion with built-in reflectors to protect the Osram LEDs and electronic circuits, guarantees the quality and phosphor color stability. The unique hollow chamber ensures that there is no pressure on the LEDs, ensuring phosphor color stability and LED lifetime. Field cuttable every 8" for installation in continuous runs up to 66ft. Push fit connectors enable easy on-site connection or order as pre-assembled cut and connected lengths.

**liniLED<sup>®</sup> Deco Specifications**

<b>LED</b>	Osram Duris™ E 5 / RGB: MultiLED / Color: TopLED <sup>®</sup> long life
<b>Number of LEDs</b>	7 per section / 11 per foot
<b>LED White</b>	2400K / 2700K / 3000K / 4000K / 6500K
<b>LED Mono Color</b>	Red / Green / Blue / Amber / Orange
<b>Beam / Flux</b>	White: 24.08-23.35 lumen/ft; Beam 110° Top / 55° Side RGB and Color (see chart below)
<b>Dimensions</b>	Top: H 0.25" x W 0.50" Side: H 0.50" x W 0.50"
<b>Length</b>	Up to 66 ft continuous runs; field cuttable every 8"; 164 ft reel
<b>Bend Radius</b>	1.2"
<b>Indoor or Outdoor</b>	IP40; IP67 Wet location (specify protected IP67 connectors) or IP68 with Mirror welded connectors
<b>Watts and Voltage</b>	24VDC; .33 W/ft; RGB and Colors (see chart below); ETL / CE
<b>Material</b>	UV/IR protected PVC encapsulation
<b>Dimmable</b>	Pulse Width Modulation, or 0-10V; or 120V-277V
<b>Life</b>	50,000 hours white; Up to 100,000 hours for colors (mfc. data at 104°F) LM-79, 5 year limited warranty
<b>24VDC</b>	Select appropriate wattage power supplies, according to run length and number of runs
<b>Accessories</b>	Mount directly with brackets, self-adhesive transparent channels, or in our aluminum extrusions and select Power supplies from our extensive range. Organic Lighting provides a full range of accessories for mounting, powering, and controlling.



0.5" W x 0.25" H

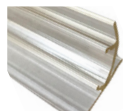
0.5" W x 0.25" H

0.5" W x 0.5" H

**Accessories and Extrusions**



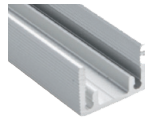
PET Channel #011369



Angled Channel #011367



SS Clips #011378



Aluminum Channel #012851



Top Connector #011201



Side Connector #011203

OLS Part # Top	OLS Part # Side	Color	Max length	LEDs/ft	V/DC	Current (A)	CRI	lm/ft	W/ft	Bin
011856	011875	2400K	66 ft.	11	24	350mA	> 80	24.08	0.33	±50
011859	011878	2700K	66 ft.	11	24	350mA	> 80	25.91	0.33	±50
011601	011766	3000K	66 ft.	11	24	350mA	> 80	25.91	0.33	±50
011608	011740	4000K	66 ft.	11	24	350mA	> 80	28.35	0.33	±50
011607	011765	6500K	66 ft.	11	24	350mA	> 80	28.35	0.33	±50
011602	011760	RGB	33 ft.	11	24	350mA		44	2.12	
011603	011761	Amber	66 ft.	11	24	350mA		11.89	1.34	
011604	011762	Red	66 ft.	11	24	350mA		14.02	1.34	
011605	011763	Green	66 ft.	11	24	350mA		26.82	0.76	
011606	011764	Blue	66 ft.	11	24	350mA		5.79	0.51	

Specifications are correct at the time of publishing, but may be modified or improved in accordance with current electrical, safety or manufacturing methods without notification.

