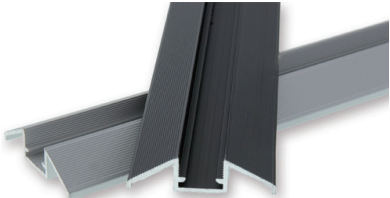


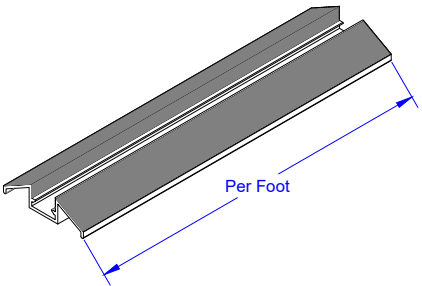
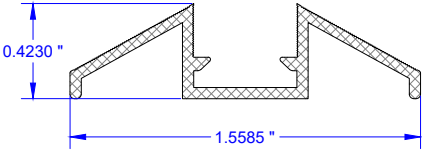
Project

Type

Date



liniLED[®] Wall / Floor Extrusions



liniLED[®] Wall / Floor Extrusions

Mounts with screws to any surface providing a decorative or walk-over channel which liniLED push-fits in to.

Screw heads recess in to the lower channel allowing liniLED to fit perfectly flat and secure.

Angled sides enable walk-over applications.

liniLED[®] 2" Line Extrusion

Dimensions	W1.57"xH.39"
Material	Aluminum
Application	Orientation lighting for wall and floor
Length	16'6"
Weight	2.7oz per foot
Used with	liniLED [®]

OLS Part #	Description
011593	Wall/floor profile, Silver, per foot
011595	Wall/floor profile, Black, per foot

Specifications are correct at the time of publishing, but may be modified or improved in accordance with current electrical, safety or manufacturing methods without notification.