

## liniLED® Marker Lights

Round: 3" and 5.5"; Square: 2.75" and 4.6"

Available in four dimensions (Round: 3" and 5.5"; Square: 2.75" and 4.6")

Your choice of three luminous intensities (Deco <1W/fixture, Power <1.3W/fixture and PSP <3W/fixture)

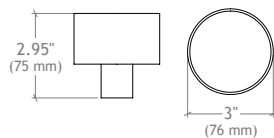
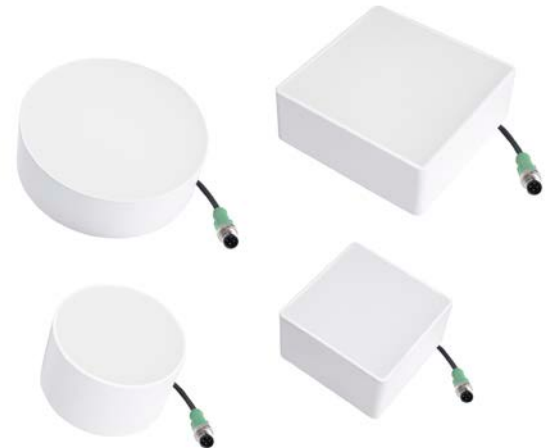
Color temperatures: 2700K, 3000K, 4000K and 6500K

Deco versions also available in RGB, Red, Green, Blue and Amber

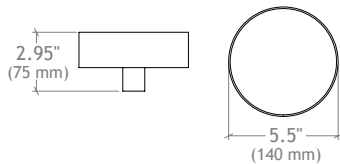
IP68 rated

Drive over applications ~ 3,000 lbs.

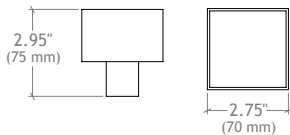
Life >50,000 hours (LM79)



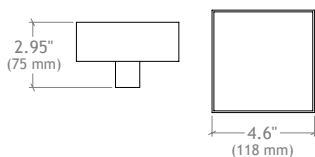
Marker Light: 3" Round



Marker Light: 5.5" Round



Marker Light: 2.75" Square



Marker Light: 4.6" Square

### Construction

Cast polyurethane resin within epoxy coated 316 stainless steel with IP68 connectors

### Mounting

Surface mount

### LED

SMD OSRAM Power TOPLED® long life

### Degree of Protection

Wet connector IP67, IP68

### Weight

1 - 2.5 lbs.

### Driver / Electrical

Choice of Magnetic driver, Universal Voltage (120-277V), electronic driver or 347V electronic drivers - in either Non-Dim or 0-10v / 10% Dimming.

### Connection

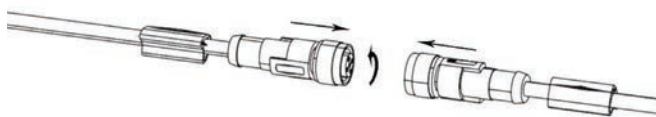
Connections are rated IP68.

### Finish

Marker Lights are 316 stainless steel with white powder coat. Housing is 316 stainless steel.

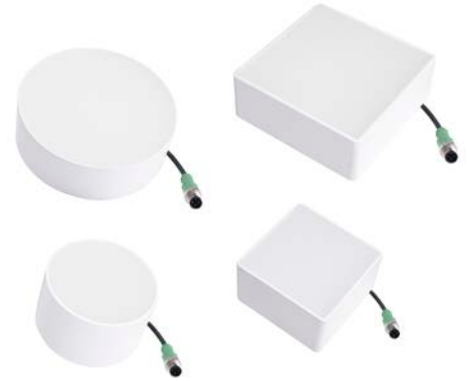


Push and twist for an IP68 connection.

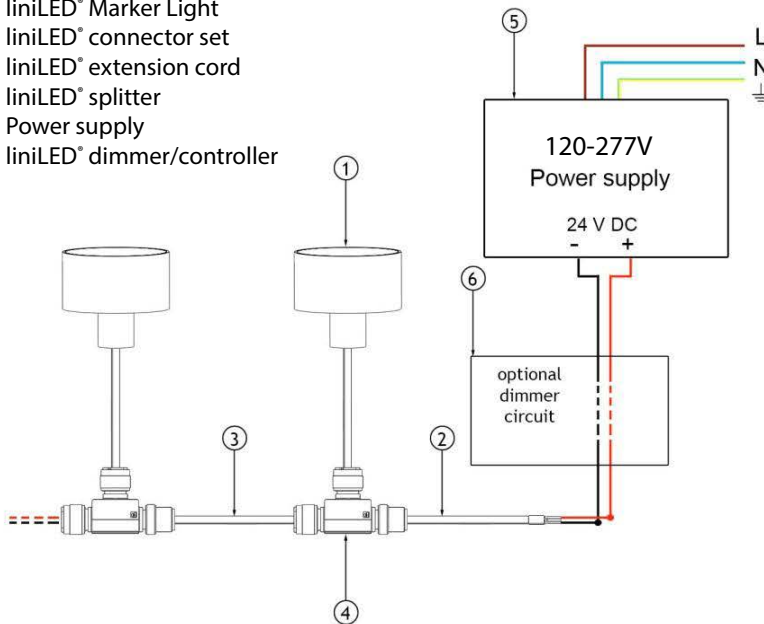


## liniLED<sup>®</sup> Marker Lights

Round: 3" and 5.5"; Square: 2.75" and 4.6"



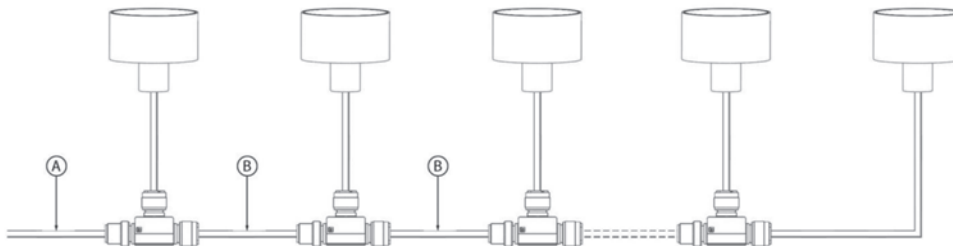
- 1 liniLED<sup>®</sup> Marker Light
- 2 liniLED<sup>®</sup> connector set
- 3 liniLED<sup>®</sup> extension cord
- 4 liniLED<sup>®</sup> splitter
- 5 Power supply
- 6 liniLED<sup>®</sup> dimmer/controller



### Power Consumption and Connection Length

To calculate the total power consumption, the consumption of the individual marker lights can be summed up and multiplied with 110%.

To determine the maximum number of marker lights that can be connected on one string, the table below can be used. If the situation below does not represent the situation required, please contact your supplier for a special calculation.



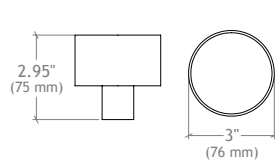
Colour	Ø 76 mm Ø 84 mm □ 70 x 70 mm				Ø 139 mm □ 118 x 118 mm			
	A = 5 m		A = 10 m		A = 5 m		A = 10 m	
	B = 5 m	B = 10 m	B = 5 m	B = 10 m	B = 5 m	B = 10 m	B = 5 m	B = 10 m
Warm White ( 2700K )	12	9	11	8	8	6	7	6
Warm White ( 3000K )	12	9	12	9	9	6	8	6
Natural White ( 4000K )	13	9	12	9	9	6	8	6
Cold White ( 6500K )	13	9	12	9	9	6	8	6

Specifications are correct at the time of publishing, but may be modified or improved in accordance with current electrical, safety or manufacturing methods without notification.

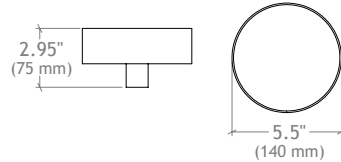
Summer 2016

## liniLED® Marker Lights

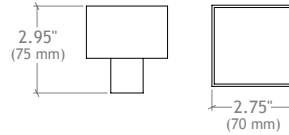
Round: 3" and 5.5"; Square: 2.75" and 4.6"



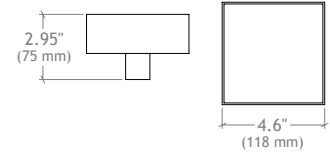
Marker Light: 3" Round



Marker Light: 5.5" Round



Marker Light: 2.75" Square



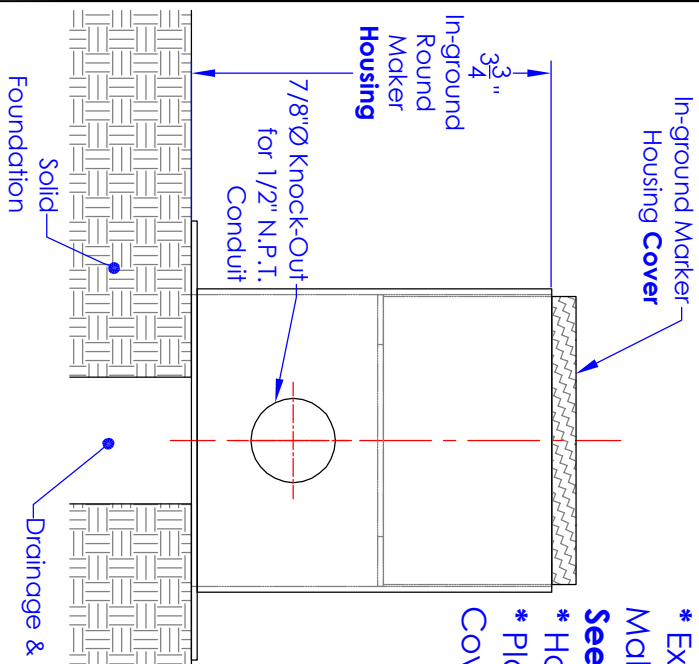
Marker Light: 4.6" Square

liniLED® Marker Light	Color Temp	Deco Part #	Power Part #	PSP Part #
<b>Round small</b> 3"w x 3"h	2400K	013198	013216	013217
	2700K	013199	013208	013212
	3000K	013200	013209	013213
	4000K	013206	013210	013214
	6500K	013205	013211	013215
	RGB	013207		
	Red	013202		
	Green	013203		
	Blue	013204		
	Amber	013201		
<b>Round large</b> 5.5"w x 3"h	2400K	013218	013236	013237
	2700K	013219	013228	013232
	3000K	013220	013229	013233
	4000K	013226	013230	013234
	6500K	013225	013231	013235
	RGB	013227		
	Red	013222		
	Green	013223		
	Blue	013224		
	Amber	013221		

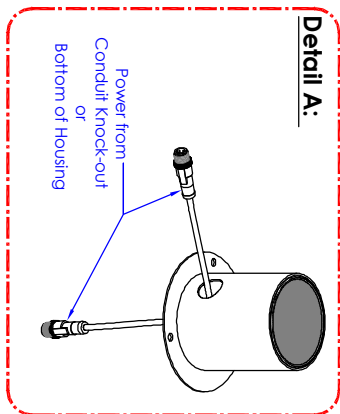
liniLED® Marker Light	Color Temp	Deco Part #	Power Part #	PSP Part #
<b>Square small</b> 2.75"w x 3"h	2400K	013238	013256	013257
	2700K	013248	013248	013252
	3000K	013240	013249	013253
	4000K	013246	013250	013254
	6500K	013245	013251	013255
	RGB	013247		
	Red	013242		
	Green	013243		
	Blue	013244		
	Amber	013241		
<b>Square large</b> 4.6"w x 3"h	2400K	013258	013276	013277
	2700K	013259	013268	013272
	3000K	013260	013269	013273
	4000K	013266	013270	013274
	6500K	013265	013271	013275
	RGB	013267		
	Red	013262		
	Green	013263		
	Blue	013264		
	Amber	013261		

Part #	liniLED® Housing, Connectors & Splitter	Length
013100	Round small housing	
013102	Round large housing	
013103	Square small housing	
013104	Square large housing	
014530	Connector set, IP68	16'
014507	Connector set, IP68	33'
014531	RGB Connector set, IP68	16'
014517	RGB Connector set, IP68	33'
014508	Extension Cord, IP68	16'
014509	Extension Cord, IP68	33'
014518	RGB Extension Cord, IP68	16'
014519	RGB Extension Cord, IP68	33'
014510	Splitter for Mono and RGB IP68	

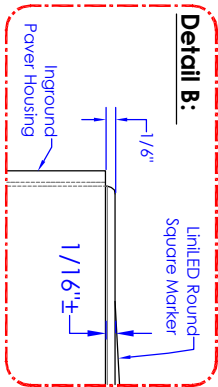
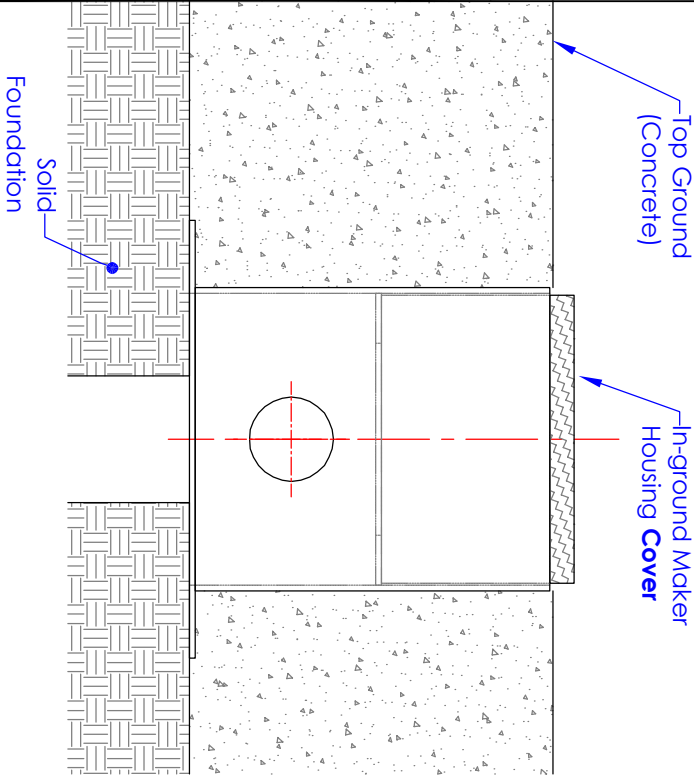
**Step 1:** Scale: 6" = 1'-0"



- \* Excavate soil for "In-ground Maker Housing" and conduit Run. **See Detail A.**
- \* Housing to sit on Solid Foundation.
- \* Place "In-ground Maker Housing Cover" on housing.

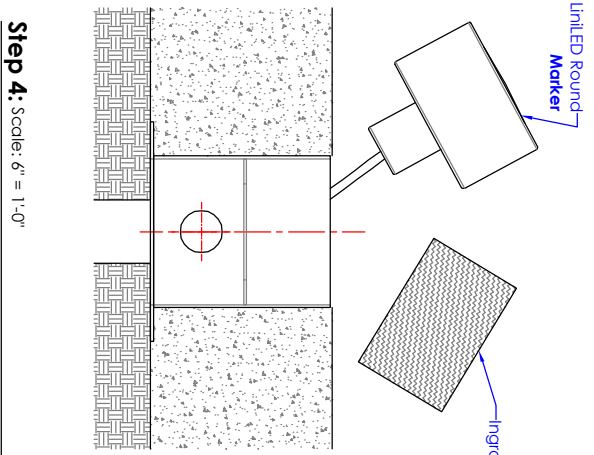


**Step 2:** Scale: 6" = 1'-0"

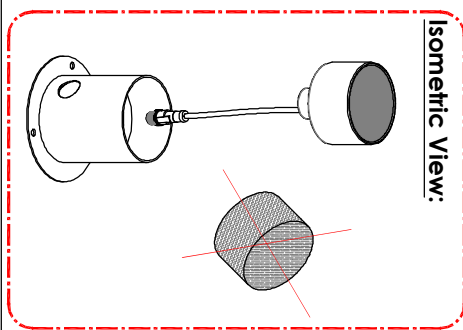


- \* Surround "Housing" by Top Ground.
- \* Level Top Ground appropriately.
- Note: Marker to project from Housing approximately 1/16".
- See Detail B.**
- \* Cover to prevent any debris from entering housing.

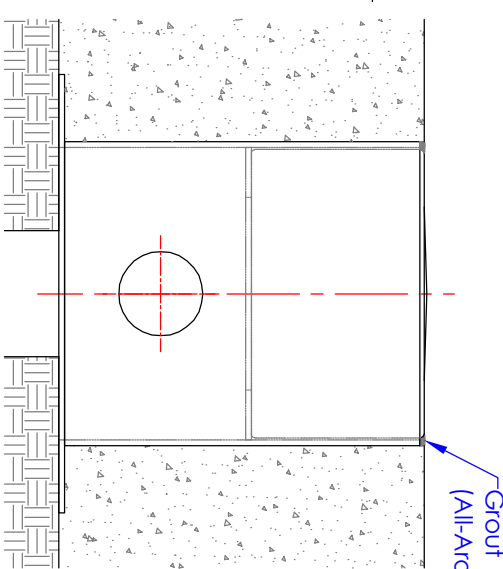
**Step 3:** Scale: N.I.S.



- \* Remove cover.
- \* Install Maker



**Step 4:** Scale: 6" = 1'-0"



- \* Grout (all-around) as shown.

NAME	DATE
DRAWN BY: EO	03/04/15
CHECKED:	
ENG. REVISION:	
MATERIAL:	
FINISH:	
UNLESS OTHERWISE SPECIFIED:	
DIMENSIONS ARE IN INCHES:	
TOLERANCES:	
FRACATIONAL: ± 1/16	
ANGULAR: MACH ± 5 BEND ± 0.03	
TWO PLACE DECIMAL ±.030	
THREE PLACE DECIMAL ±.015	
ORDER #	-

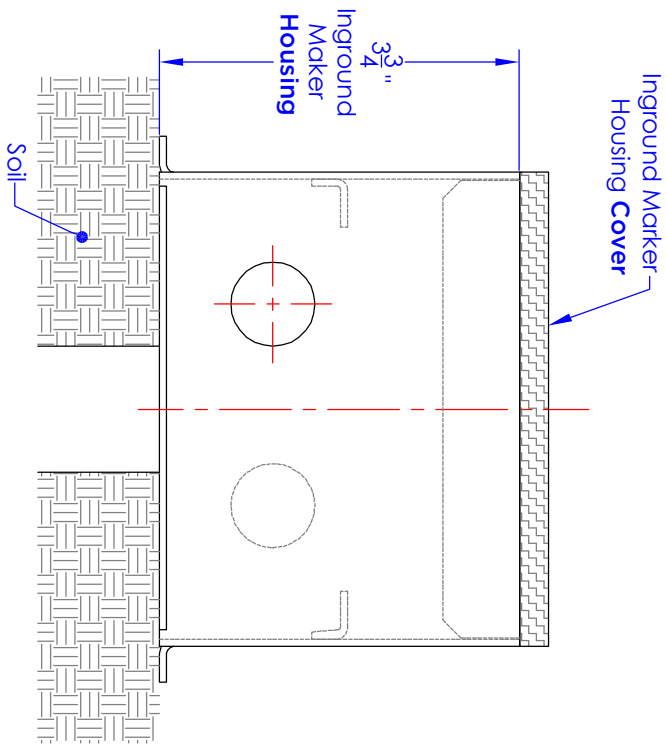
**ORGANIC LIGHTING SYSTEMS**

1511 N. Virginia Ave.  
Aurora, CO 91702, USA  
Ph: 626.969.6820 Fax: 626.696.6830 Web: organiclighting.com

**Round Marker & Housing Installation**

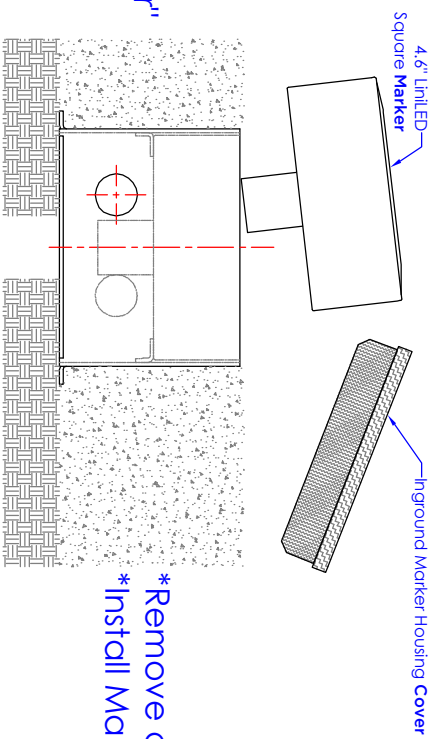
SIZE **A** DWG. NO. REV

**Step 1:** Scale: 6" = 1'-0"



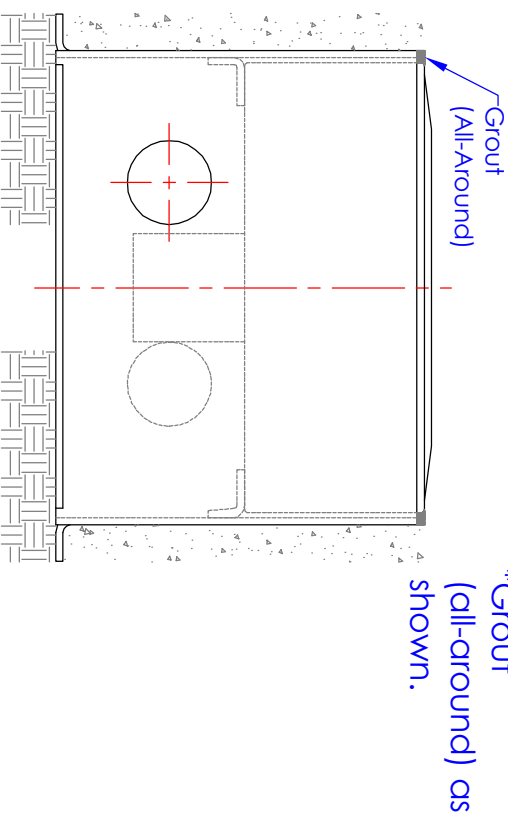
- \* Excavate soil for "Inground Marker Housing" and conduit Runs.
- \* Place "Inground Maker Housing Cover" on housing.

**Step 3:** Scale: 6" = 1'-0"

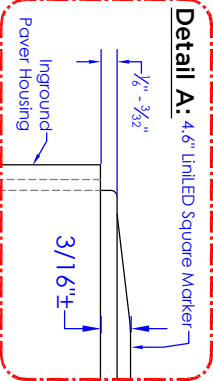
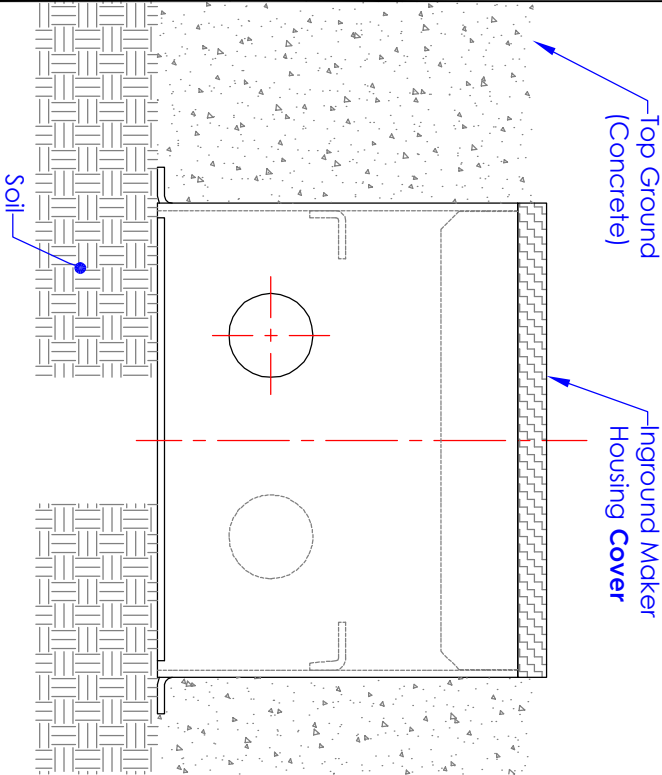


- \* Remove cover.
- \* Install Marker

**Step 4:** Scale: 6" = 1'-0"



**Step 2:** Scale: 6" = 1'-0"



- \* Surround "Housing" by Top Ground.
- \* Level Top Ground appropriately.
- Note: Marker to project from Housing approximately 3/16."
- See Detail A
- \* Cover to prevent any debris from entering housing.

REV.	DESCRIPTION	DATE	DRAWN BY

NAME	DATE
EO	07/08/14
CHECKED	-
ENG. REVISION	-
MATERIAL:	-
FINISH:	-
UNLESS OTHERWISE SPECIFIED:	-
DIMENSIONS ARE IN INCHES	-
TOLERANCES:	-
FRACTIONAL: ± 1/16	-
ANGULAR: MACH ±0.5 BEND ± 0.03	-
TWO PLACE DECIMAL ±0.01	-
THREE PLACE DECIMAL ±0.015	-
ORDER #	-

**ORGANIC LIGHTING SYSTEMS**

1511 N. Virginia Ave.  
 AUSA, CO. 91702, USA  
 Ph: 626.967.6820 Fax: 626.676.6830 Web: organiclighting.com

**Square Marker & Housing Installation**

SIZE	DWG. NO.	REV
A	-	-
SCALE: Varies	WEIGHT:	SHEET 1 OF 1