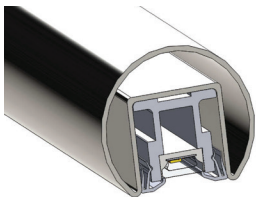


Project	Type	Date
---------	------	------

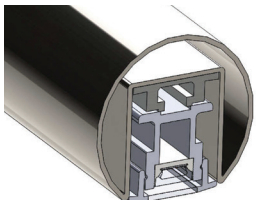
liniLED[®] LED Illuminated Handrail

Two Dimensions: 1.66" and 1.90"

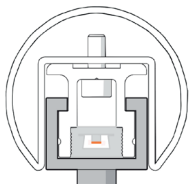
Heavy duty stainless steel handrail: AISI 316 and AISI 304
 Dimensions: 1.66" (42.4 mm), 1.90" (48.3 mm)
 Curved handrail (15 ft. radius or greater) is available upon request
 Channel for continuous liniLED[®] Top LED strip
 Energy efficient and dimmable
 The liniLED[®] strip press fits securely into the channel
 Wall and post brackets are designed for quick and easy installation
 Available in various colors and luminous intensities
 Manufactured in the US/EU
 ADA compliant
 Expected lifetime >50,000 - 60,000 hours
 5-year limited warranty



round Ø 1.66" (42.4 mm)



round Ø 1.90" (48.3 mm)



cross section of the round handrail with LED strip



cross section with power cables

Construction

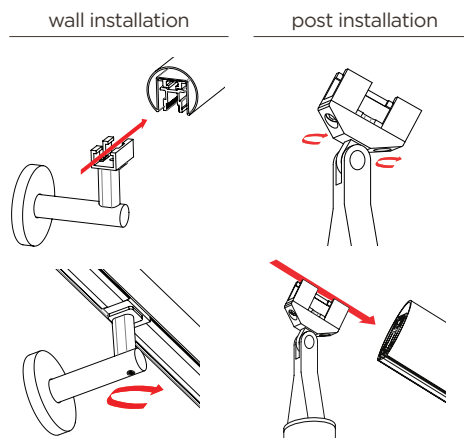
Heavy duty stainless steel handrail: AISI 316 and AISI 304. Precision machined steel endcaps. Wire through connections.

Optics

liniLED[®] LED strips available in three white luminous intensities: low output (Deco 33-39 lm/ft); medium output (Power 113-122 lm/ft); high output (PSP 227-257 lm/ft): Warm White 2700K and 3000K, and Natural White 4000K. The Deco and Power versions are also available in the colors: red, green, blue and amber. Deco is available in RGB.

Mounting

Wall or post mounted and designed for quick and easy installation — the position of the bracket can be moved freely in the profile by sliding it to any position while retaining continuous illumination. Post mounted are available with several infill options, i.e., glass, cables, railings.

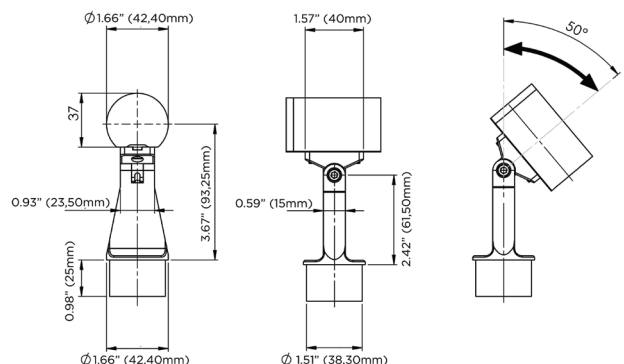
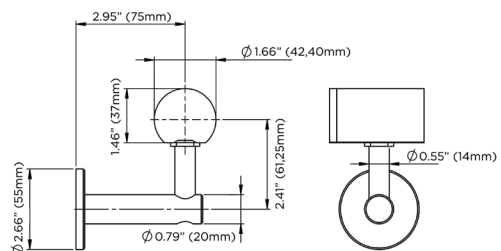


Standard and customized angles

There are three standard angles for the liniLED[®] Handrails: 45°, 90° and 120°. Other angles can be customized upon request.

Connecting

The liniLED[®] Handrails can easily be connected with several connectors. One of our specialties is to translate ideas and requirements into customized solutions and to deliver the liniLED[®] Handrail pre-assembled*.



Specifications are correct at the time of publishing, but may be modified or improved in accordance with current electrical, safety or manufacturing methods without notification.

Project	Type	Date
---------	------	------

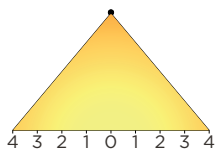
How to specify your energy efficient handrail **liniLED[®] LED Illuminated Handrail**

As each lighting project is unique, all the components of the liniLED[®] LED Illuminated Handrail are professionally customized. Therefore, it is of great importance to provide fully dimensioned plans, DWG files and detailed drawings, in addition to the useful menu below.



liniLED[®] Illuminated Handrail Technical Information

Models	DECO low output		POWER medium output		PSP high output	
LEDs / ft	11		11		37	
Lumen Output / ft	33-39 lumen/ft (112 lm/m)		113-122 lumen/ft (368 lm/m)		227-257 lumen/ft (741 lm/m)	
Watts / ft	1 W/ft (3.3 W/m)		1.28 W/ft (4.6 W/m)		2.89 W/ft (9.7 W/m)	
CRI	85-90		85-90		85-90	
Max. single run	66 ft (20 m)		33 ft (10 m)		33 ft (10 m)	
Environment	<input type="radio"/> Indoor	<input type="radio"/> Outdoor	<input type="radio"/> Indoor	<input type="radio"/> Outdoor	<input type="radio"/> Indoor	<input type="radio"/> Outdoor
Mounting	<input type="radio"/> Wall	<input type="radio"/> Post	<input type="radio"/> Wall	<input type="radio"/> Post	<input type="radio"/> Wall	<input type="radio"/> Post
Infill (Post mounting)	<input type="radio"/> Glass	<input type="radio"/> Railing	<input type="radio"/> Glass	<input type="radio"/> Railing	<input type="radio"/> Glass	<input type="radio"/> Railing
	<input type="radio"/> Cables	<input type="radio"/> Custom	<input type="radio"/> Cables	<input type="radio"/> Custom	<input type="radio"/> Cables	<input type="radio"/> Custom
Size/Diameter	<input type="radio"/> 1.66" (42.4 mm)		<input type="radio"/> 1.66" (42.4 mm)		<input type="radio"/> 1.66" (42.4 mm)	
	<input type="radio"/> 1.90" (48.3 mm)		<input type="radio"/> 1.90" (48.3 mm)		<input type="radio"/> 1.90" (48.3 mm)	
Material	<input type="radio"/> AISI 316 Stainless Steel		<input type="radio"/> AISI 316 Stainless Steel		<input type="radio"/> AISI 316 Stainless Steel	
	<input type="radio"/> AISI 304 Stainless Steel		<input type="radio"/> AISI 304 Stainless Steel		<input type="radio"/> AISI 304 Stainless Steel	
Colors	<input type="radio"/> Warm White 3000K		<input type="radio"/> Warm White 2700K		<input type="radio"/> Warm White 2700K	
	<input type="radio"/> Warm White 4000K		<input type="radio"/> Warm White 3000K		<input type="radio"/> Warm White 3000K	
	<input type="radio"/> RGB		<input type="radio"/> Natural White 4000K		<input type="radio"/> Natural White 4000K	
	<input type="radio"/> Custom colors available		<input type="radio"/> Custom colors available		<input type="radio"/> Custom colors available	
Bends	<input type="radio"/> 45° x _____ (qty)		<input type="radio"/> 45° x _____ (qty)		<input type="radio"/> 45° x _____ (qty)	
	<input type="radio"/> 90° x _____ (qty)		<input type="radio"/> 90° x _____ (qty)		<input type="radio"/> 90° x _____ (qty)	
	<input type="radio"/> 120° x _____ (qty)		<input type="radio"/> 120° x _____ (qty)		<input type="radio"/> 120° x _____ (qty)	
	<input type="radio"/> Custom		<input type="radio"/> Custom		<input type="radio"/> Custom	
Total length	<input type="radio"/> _____ ft.		<input type="radio"/> _____ ft.		<input type="radio"/> _____ ft.	



liniLED[®] Illuminated Handrail Typical Fc. levels

	Handrail Height	0	1'	2'	3'	4'
Deco 3000K	34.5"H	4.67	3.42	1.75	0.913	0.363
	40.5"H	3.5	2.76	1.64	0.919	0.494
Deco 4000K	34.5"H	5.44	3.97	2.17	1.07	0.488
	40.5"H	4.26	3.32	2.02	1.12	0.589
Deco RGB	34.5"H	5.53	3.94	2.08	1.03	0.5
	40.5"H	4.35	3.38	2.01	1.13	0.575
Power 2700K	34.5"H	16.7	12.5	6.08	2.77	1.01
	40.5"H	12.5	10.1	5.74	3.06	1.39
Power 3000K	34.5"H	17.1	12.3	7.09	2.12	0.629
	40.5"H	13.1	10.3	6.4	3.45	0.934
Power 4000K	34.5"H	18.1	13.6	7.19	3.39	1.14
	40.5"H	13.9	11.2	6.82	3.87	1.6

	Handrail Height	0	1'	2'	3'	4'
PSP 2700K	34.5"H	30	21	11.2	5.67	1.86
	40.5"H	21.8	16.6	10	5.88	2.74
PSP 3000K	34.5"H	26.6	20	10.4	5.23	1.53
	40.5"H	21.1	17	9.8	5.88	2.62
PSP 4000K	34.5"H	30.9	22.5	13.2	5.29	1.12
	40.5"H	22.6	17.8	11.2	6.6	1.95

Specifications are correct at the time of publishing, but may be modified or improved in accordance with current electrical, safety or manufacturing methods without notification.