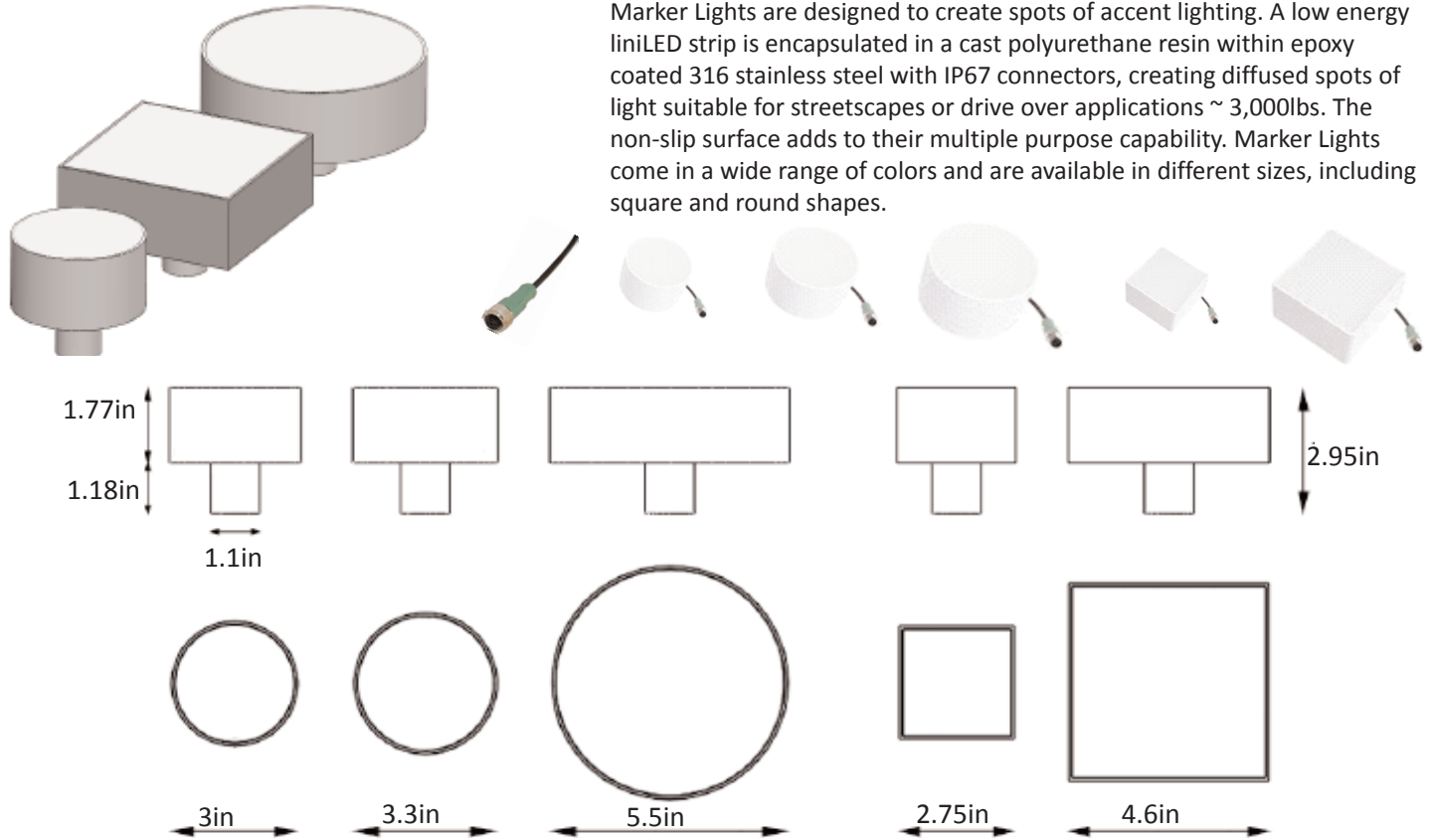


DATASHEET

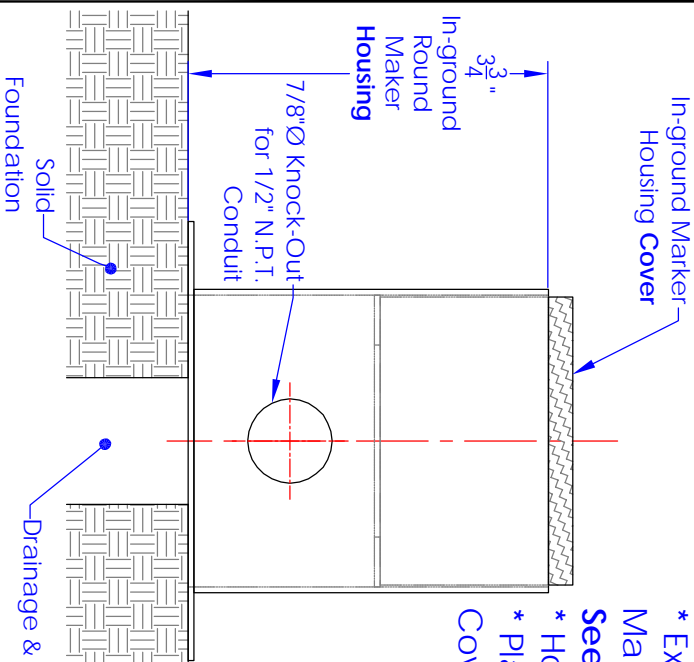


Marker Lights

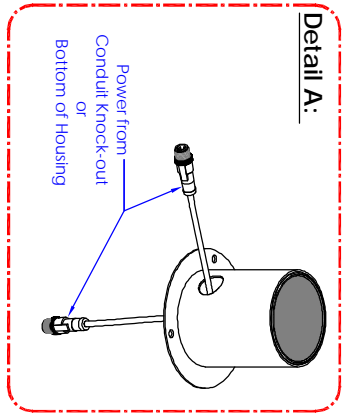
PU Power Connector

Dimensions	See diagram above	Cord Length	16'6", 32'6"
Power	1W - 3W each	Weight	6oz.
Degree of protection (IP)	Wet Connector IP67, IP68	Product Code	Description
Material	Stainless Steel 316, PU inground, liniLED	014530	PU Power Connector Mono 16'6"
Trim	White	014507	PU Power Connector Mono 32'6"
Weight	1 - 2.5lbs	014531	PU Power Connector RGB 16'6"
Deco < 1W/fixture:	3000K, 4000K, 6500, RGB, Red, Green, Blue, Amber	014517	PU Power Connector RGB 32'6"
Power < 1.3W/fixture:	2700K, 3000K, 4000K, 6500K	014508	PU Extension Cord Mono 16'6"
PSP < 3W/fixture:	2700K, 3000K, 4000K, 6500K	014509	PU Extension Cord Mono 32'6"
		014518	PU Extension Cord RGB 16'6"
		014519	PU Extension Cord RGB 32'6"
		014510	PU Splitter

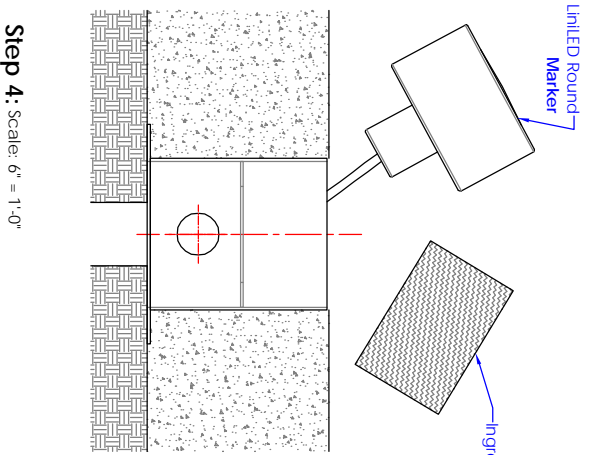
Step 1: Scale: 6" = 1'-0"



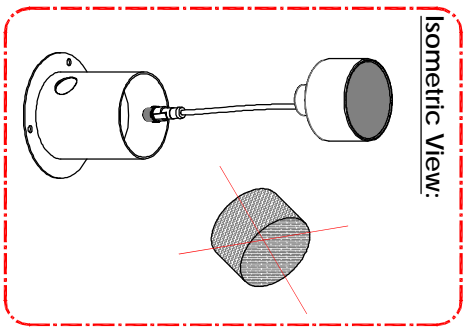
- * Excavate soil for "In-ground Marker Housing" and conduit Run. **See Detail A.**
- * Housing to sit on Solid Foundation.
- * Place "In-ground Maker Housing Cover" on housing.



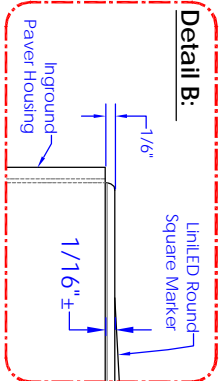
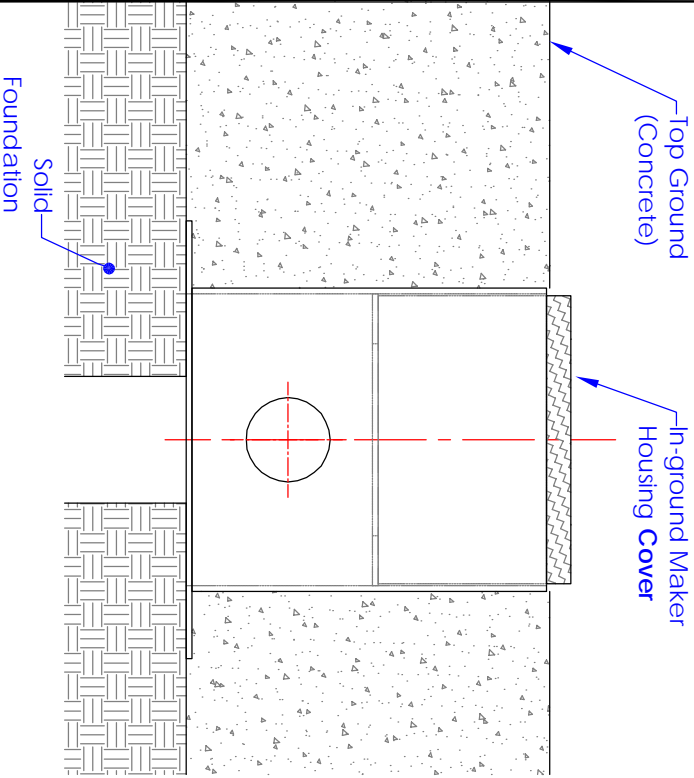
Step 3: Scale: N.T.S.



- * Remove cover.
- * Install Maker

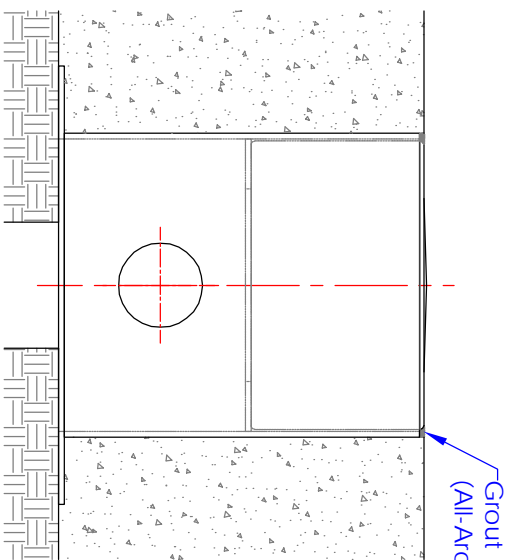


Step 2: Scale: 6" = 1'-0"



- * Surround "Housing" by Top Ground.
- * Level Top Ground appropriately.
- Note: Marker to project from Housing approximately $\frac{1}{16}$ ".
- See Detail B.
- * Cover to prevent any debris from entering housing.

Step 4: Scale: 6" = 1'-0"



- * Grout (all-around) as shown.

NAME	DATE
EO	03/04/15
DRAWN BY:	
CHECKED	
ENG REVISION	
MATERIAL:	
FINISH:	
UNLESS OTHERWISE SPECIFIED:	
DIMENSIONS ARE IN INCHES	
TOLERANCES:	
FRAGMENTAL ± 1/16	
ANGULAR MATCH ± 0.5 BEND ± 0.03	
TWO PLACE DECIMAL ± 0.03	
THREE PLACE DECIMAL ± 0.015	
ORDER #	

ORGANIC LIGHTING SYSTEMS

5111 N. Virginia Ave.
Azusa, Ca. 91702, USA
Ph. 626.969.6820 Fax 626.696.6830
Web: organiclighting.com

Round Marker & Housing Installation

TITLE:

SCALE: Varies DWG. NO. **A** SHEET 1 OF 1