

ORGANIC LIGHTING[®]
SYSTEMS

liniLED[®]
Guide



Exceptional Products, Exceptional Service

liniLED® LED Strips

- Ultra low energy
- USA/EU manufacture

Indoor or outdoor specification. The UV resistant PVC co-extrusion with an inbuilt reflector protects against adverse environments and handling, while a unique hollow chamber ensures phosphor stability and enables push-fit, quick connection. Tough clear P.E.T. plastic channels or aluminum extrusions enable mounting in long continuous 33 to 66 ft. runs (see chart below). 24V DC, 50,000 – 60,000 hours, 5-year limited warranty, CRI 85-90. Fully controllable for dimming or color changes via a full selection of LED drivers for 0-10v, DMX, or 2 wire Magnetic control, which are compatible with third-party systems, or select liniLED® system options.

liniLED® Top

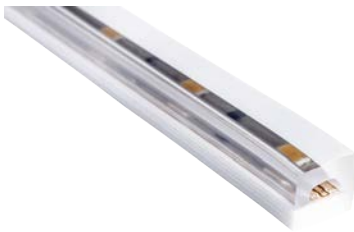


Dimensions 1/2" w x 1/4" h
(W12.7 x H6.35 mm)

wet or dry location | IP68 (Connections IP67)

	DECO	POWER	PSP
2400K White	011856	011857	011858
2700K White	011859	011598	011731
3000K White	011601	011600	011732
4000K White	011608	011599	011733
6500K White	011607	011609	011734
RGB	011602		
Red	011604	011860	
Green	011605	011862	
Blue	011606	011861	
Amber	011603	011863	
Orange		011864	

liniLED® Side



Dimensions 1/2" w x 1/2" h
(W12.7 x H12.7 mm)

wet or dry location | IP68 (Connections IP67)

	DECO	POWER	PSP
2400K White	011875	011876	011877
2700K White	011878	011739	011735
3000K White	011766	011741	011736
4000K White	011740	011743	011737
6500K White	011765	011742	011738
RGB	011760		
Red	011762	011870	
Green	011763	011872	
Blue	011764	011871	
Amber	011761	011873	
Orange		011874	

liniLED® PCB



liniLED® PSP shown
Dimensions 7/16" w x 1/16" h
(W11.11 x H.06 mm)

dry location | unprotected strip

	DECO	POWER	PSP
2400K White	012197	012198	012199
2700K White	012174	012188	012192
3000K White	012180	012189	012193
4000K White	012186	012190	012194
6500K White	012185	012191	012195
RGB	012187		
Red	012182	012176	
Green	012183	012178	
Blue	012184	012177	
Amber	012181	012179	
Orange		012175	

Compare liniLED®

	Deco	Power	Power Short Pitch
Lumen Output / ft	33-39 lumen/ft (112 lm/m)	119-122 lumen/ft (368 lm/m)	237-257 lumen/ft (741 lm/m)
Watts / ft	.3 W/ft (3.3 W/m)	1.28 W/ft (4.6 W/m)	2.89 W/ft (9.7 W/m)
CRI	85	85	85
IP	IP40-IP67	IP40-IP67	IP40-IP67
Max. Single Run	66 ft (20 m) / RGB 33 ft (10 m)	33 ft (10 m)	33 ft (10 m)
Cutttable	8 in (20 cm)	8 in (20 cm), Colors 4 in (10 cm)	2 in (5 cm)
LEDs / ft	11	11	37



Connectors

Top & Side Connectors

Push-fit Power Connector sets
Supplied with termination end cap

3'	Mono Color Top, IP40	011200
16'	Mono Color Top, IP40	011201
3'	RGB Color Top, IP40	011204
16'	RGB Color Top, IP40	011205
3'	Mono Color Side, IP40	011202
16'	Mono Color Side, IP40	011203
3'	RGB Color Side, IP40	011206
16'	RGB Color Side, IP40	011207
	Inline Connector, Top RGB*	011747
	Inline Connector, Top Mono*	011790

Custom lengths to order.

*All connectors are IP40. To make IP67, use IP67 Waterproofing Kit listed below.

Extension Connector Cords & Caps

Connects two liniLED strips with a 10" cable in between.

	Mono Color Top*	011208
	Mono Color Side*	011209
	RGB Top*	011210
	RGB Side*	011211
	Protective End Cap Top	011503
	Protective End Cap Side	011504

Custom lengths to order.

*All connectors are IP40. To make IP67, use IP67 Waterproofing Kit listed below.

IP67 Waterproofing Kit

Includes di-electric epoxy, applicator and spare nozzles

	IP67 factory installed connections	011508
	IP67 10ML Kit, per run	011511

PCB Connect

	PCB Connector Set	011750
	PCB Inline Connector	011797
	PCB Extension Cord	011795

Connect

IP68 - Forta and Marker Lights

	Connector Set 16' (5 m)	014530
	Connector Set 33' (10 m)	014507
	Connector Set RGB 16' (5 m)	014531
	Connector Set RGB 33' (10 m)	014517
	Extension Cord 16' (5 m)	014508
	Extension Cord 33' (10 m)	014509
	Extension Cord RGB 16' (5 m)	014518
	Extension Cord RGB 33' (10 m)	014519
	Splitter for Mono and RGB	014510

Mounting

Mounting Channels

P.E.T. clear channel self-adhesive backed, grips lightly for straight runs in minimum space	011369
Angled clear channel, 35° angle for a 90° corner, 4'	011367
Aluminum mounting channel (clip not included)	011371
Aluminum clip	011372
liniLED® Side, saddle clip	011373
liniLED® Top, saddle clip	011374

3/4"W Aluminum PSP Mounting Channel

Low Extrusion (.75"w x .5"h)	011555
High Extrusion (.75"w x .75"h)	011552
Lens Clear Low	011549
Lens Frosted Low	011558
Lens Frosted High	011564
Assembly Clip Alu High/Low	011546
End Cap Profile Low	011542
End Cap Profile High	011544

Aeris Extrusion

Aeris miniature extrusions are available with various heights of lenses, to incorporate in architecture or use as free floating lighting elements, both indoors and outdoors... see Specifications for full details.

3/4" Low extrusion (.8"w x .75"h)	010710
3/4" High extrusion (.8"w x 1.48"h)	010714
3/4" Cable tray	010750
3/4" Frosted flush lens	010800
3/4" Clear flush lens	010804
3/4" Frosted high lens	010808
3/4" Assembly clip	010890
3/4" Swivel mount	010860
3/4" IP67 Encapsulated Low extrusion (preassembled)	010701
3/4" IP67 Encapsulated High extrusion (preassembled)	010702
1-1/4" Low extrusion (1.2"w x .75"h)	010730
1-1/4" High extrusion (1.2"w x 1.48"h)	010734
1-1/4" Cable tray	010754
1-1/4" Frosted flush lens	010820
1-1/4" Clear flush lens	010824
1-1/4" Frosted high lens	010828
1-1/4" Assembly clip	010891
1-1/4" Swivel mount	010870
1-1/4" IP67 Encapsulated Low extrusion (preassembled)	010704
1-1/4" IP67 Encapsulated High extrusion (preassembled)	010705

More liniLED® extrusions on page 5.

Power Supplies (24V)

All power supplies are UL approved.



Plug-in Power Supply Indoor

15W	011306
120W	011323



Non-Dimming DC Drivers

Indoor | Outdoor

150W	IP65-IP67	011327
240W	IP65-IP67	011331
320W	IP65-IP67	011335
500W		011339



0-10V Dimming DC Drivers

Indoor | Outdoor

25W	011380
40W	011381
60W	011382
75W	011383
100W	011384
240W	011385



Dimming Magnetic DC Drivers

IP67 Outdoor rated; Only for Mono colors.

20W	120V	011350
40W	120V	011351
50W	120V	011352
60W	120V	011353
96W	120V	011354
100W	120V	011355
150W	120V	011356
200W	120V	011357
300W	120V	011358
60W	277V	011359
150W	277V	011360



NEMA 4 Box, Waterproof Enclosure for Multiple Outlets

011300

Single door with continuous hinge, wall mount. Requires P1210 sub panel (not included). Supplied with 9 liquid tight outputs and connector blocks. Dimensions: 12"l x 10"w x 5"h

NEMA Interior Mounting Panel 011301

Controlling



RGB Stand-alone Controller

For demo or wall box mounting; Use with liniLED® Wall Panel (011450); Max 120W @ 24VDC; 4.3/4" x 1.7/16" x 7/8"H

011100

RGB Control Set

Includes wall panel and basic control

011101



RGB Wall Panel

To be used with liniLED® LED strip RGB and RGB Basic Controller 120W (011120) or RGB/Dim Controller 240W (011120)

011450



100W Power Supply/RGB Controller

Onboard and remote addressing & programming. DMX/Dali/0-10V; Max.100W @24VDC

011341



RGB/Dim Controller

Onboard and remote addressing & programming. DMX/Dali/0-10V Max.100W @24VDC

LIN100D2 100W DMX	Max. 100W @ 24VDC	011343
LIN180D2 180W DMX	Max. 180W @ 24VDC	011344
LIN720D2 720W DMX	Max. 720W @ 24VDC	011345



DIMWHEEL/Color Wall control

Programmable On/Off RGB color wheel for LIN100/180/720, 10A. 24VDC

011342

Lights

Marker Lights

Pedestrian Traffic

liniLED® Marker Lights (IP68) are trimless, robust fully encapsulated, ultra low energy, (0.2W to 1.8W) buriable fixtures. Available with liniLED® Deco, Power or PSP; all colors, RGB, Amber, White 2400K, 2700K, 3000K, 4000K, 6500K.



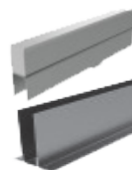
Round	3"
Round	5.5"
Square	3"
Square	4.6"

See Connecting for IP68 connectors.

liniLED® Forta

H-Profile

liniLED® Forta is an in-ground 24V/DC, drive-over fixture. Up to 66ft continuous connection.



20 lm/ft	1.18"w x 1'-4"l
20 lm/ft	1.18"w x 3'-4"l
20 lm/ft	1.18"w x 6'-7"l
75 lm/ft	1.18"w x 1'-4"l
75 lm/ft	1.18"w x 3'-4"l
75 lm/ft	1.18"w x 6'-7"l

Available in all liniLED® colors, RGB; and luminous intensities.

liniLED® Illuminated Handrails

The liniLED® Illuminated Handrail simplifies installation with the integration of continuous liniLED® Top, flexible 24V LED strip into the handrail. Made from 316 Stainless Steel, the illuminated handrail is suitable for indoor and outdoor applications. It may be post or wall mounted and options include glass panel supports or cables. See catalog for full range and specifications.



Aeris Suspension Kits

Aeris is suitable for suspending with or without a visible power cord. We have developed low voltage cable suspension kits. Please consult us for more information.



Cable Suspension Kit	011887
Cable Susp. Kit + power hole	011888
Cordless Low Voltage Susp. Kit, Bottom-Exit Gripper	011889
Cordless Low Voltage Susp. Kit, Side-Exit Gripper	011890

Extrusions

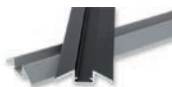
Line Extrusion

Line Extrusion can be recessed into floors, walls or ceilings.



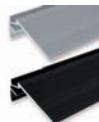
1" Linear extrusion, white	010982
1" Frosted lens, flush acrylic	010959
1" Clear lens, flush acrylic	010965
1" Extrusion end cap	010969
1" Extr. end cap, power hole	010969H
1" Extr. end cap, liniLED® slot	010969S
1" Extr., nylon mounting clip	010977
2" Linear extrusion, white	010985
2" Frosted lens, flush acrylic	010961
2" Clear lens, flush acrylic	010967
2" Extrusion end cap	010971
2" Extr. end cap, power hole	010971H
2" Extr. end cap, liniLED® slot	010971S
2" Extr., nylon mounting clip	010979

Wall/Floor/Furniture Extrusion



Silver	011593
Black	011595

Stair Extrusion Direct



Silver	011565
Black	011567

Stair Extrusion Indirect



Silver	011836
Black	011837

Cove Extrusion

Mount to walls or exterior architecture for shielded directional down or upward illumination. Clip over cover provides a vandal resistant wire way for 24V connections. True Asymmetric lenses available. Used extensively for bridge parapets lighting.



Extrusion, backing & cover	011575
Extrusion standard insert	011584
Lens for Cove Extrusion and standard insert combo	011585
Special lensing modifiers for high efficiency asymmetric directional illumination:	
Extrusion, Asymmetric insert	011586
Khatod Lens for Asymmetric insert	011587
Extrusion, Symmetric insert	011588
Khatod Lens for Symmetric insert	011589



ORGANIC LIGHTING[®]
SYSTEMS

626.969.6140 f 626.609.4288

sales@organiclighting.com

www.organiclighting.com

connected to

Ec